



MAZDA MX-5

PRICES & SPECIFICATIONS



MAZDA MX-5

Every Mazda we create is designed around one thing, you. Each car is engineered not only to move you physically, but also emotionally. We call this Jinba Ittai, meaning a sense of oneness between car and driver. Inspired by Japanese tradition, it symbolises the oneness between horse and rider, something entirely natural, like a true extension of your being that brings pure driving pleasure. The pure essence of this can be found in our best-selling two seat sports car, the Mazda MX-5. Featuring a front-engine, rear-wheel drive layout, signature 50:50 weight distribution, famed 6-speed gearbox and free-revving choice of engines, it's guaranteed to put a smile on your face every time you press the ignition switch. Don't just take our word for it, the Mazda MX-5 has won countless awards, and continues to do so.

The MX-5 is offered with a light and free-revving 1.5 132ps Skyactiv-G engine to provide pure driving pleasure. The emphasis behind the engine and driving characteristics creates a car that moves exactly as the driver expects, with manageable power and lightness that adds to the sheer agility of the car. However, if you want something with more performance, then the 2.0 184ps Skyactiv-G will satisfy your speed-seeking thrills. Coupled with an Asymmetric Limited Slip Differential, sports suspension with Bilstein dampers and a front strut brace for extra rigidity, it makes the ideal choice for those seeking a more track focused sports car.

Model available on the
 **Motability
Scheme**

6 YEAR | **MAZDA
WARRANTY**



CRAFTED IN JAPAN

THE LATEST IN TECHNOLOGY & CONVENIENCE

MAZDA CONNECT

The latest in-car infotainment

Mazda Connect allows for seamless connectivity between you and your Mazda. Information is displayed on a beautiful & clear central 8.8" screen which is perfectly positioned at eye level.

Access vehicle information and settings, entertainment options including DAB Radio, connect your smartphone via Bluetooth to make and receive calls, access your contacts, and utilise the European wide Navigation system which comes with 7 years of free map updates.



WIRELESS APPLE CARPLAY® & ANDROID AUTO™

Smarter, safer way to use your smartphone

With Apple CarPlay®, get easy access to Apple Music, Maps, Messages and make phone calls with Siri through the car's Multimedia Commander or voice commands.

Android Auto™ also allows you to access your favourite music and messaging apps, Google Maps and YouTube Music. Google Assistant voice control helps you send and receive messages, make calls, get directions and plan your day while you keep your eyes safely on the road.

THE LATEST IN TECHNOLOGY & CONVENIENCE

BOSE PREMIUM SOUND SYSTEM

Made to move you

Fitted as standard to our Exclusive-Line and Homura grades, the high performance speakers make you feel like you're at the front row of your favourite concert. Featuring speakers in both the driver & passenger headrests, the Bose Sound System in the MX-5 will make you feel even more immersed in whatever you're listening to, roof up, or down.



MULTIMEDIA COMMANDER

Easy to use, driver centric, eyes on the road

The Multimedia Commander provides simple and easy access to the Mazda Connect infotainment system. The tactile feel plays to the senses allowing for ease of use whilst on the move, and more importantly, allows you to keep your eyes on the road.



PRIME-LINE

from £28,585



Mazda MX-5 Roadster 132ps Prime-Line in Arctic White



16" Black alloy wheels



Premium Black cloth and suede seat trim with silver stitching



Rear parking sensors



Wireless Apple CarPlay® and Android Auto™

STANDARD FEATURES

EXTERIOR

- 16" Black alloy wheels
- Black premium cloth soft-top (Roadster)
- Body colour power retractable hardtop (RF)
- LED headlights with LED daytime running lights
- LED combination rear lights
- Coming home/leaving home lights
- Gloss Black fashion bars
- Gloss Black electrically-adjustable, heated door mirrors
- Rain-sensing front wipers
- Rear parking sensors
- Twin exhaust system

INTERIOR

- Body-colour co-ordinated interior upper door trim
- Leather-wrapped handbrake lever
- Leather-wrapped gear shift
- Leather-wrapped steering wheel
- Premium black cloth and suede effect seat trim with silver stitching
- Heated seats

COMFORT & CONVENIENCE

- Climate control air-conditioning
- Cruise control with Intelligent Speed Assistance (ISA)
- Electric windows with one-touch auto down
- Engine start/stop button

INFOTAINMENT

- AM/FM/DAB radio, with 6 speakers (includes 2 driver's headrest speakers) and 2 USB Type-C inputs
- Integrated Bluetooth®
- Mazda Connect multimedia system with 8.8" Colour Centre display and Multimedia Commander
- Mazda Navigation System with European mapping and 7 years of free map updates
- Wireless Apple CarPlay® & Android Auto™
- Steering wheel-mounted audio and Bluetooth® controls

SAFETY AND SECURITY

- Deployable Hood System
- Driver Attention Alert
- Hill Launch Assist
- Traffic Sign Recognition
- Lane-keep Assist System with Lane Departure Warning System
- Remote central locking with deadlocking
- Front Smart Brake Support (with autonomous emergency braking)
- Thatcham accredited alarm and immobiliser

132PS EXCLUSIVE-LINE

from £30,585



Mazda MX-5 RF 132ps Exclusive-Line in Machine Grey



16" Bright alloy wheels



Black perforated leather[^] seat trim with silver stitching



Bose sound system (9 speakers)



Dynamic stability control with track mode

STANDARD FEATURES - in addition to Prime-Line, 132ps Exclusive-Line adds:

EXTERIOR

- 16" Bright alloy wheels
- Body coloured electrically-adjustable, heated door mirrors
- Adaptive Front lighting System

INTERIOR

- Black perforated leather[^] seat trim with silver stitching
- Black plastic scuff plates with stainless insert
- Frameless, auto-dimming rear-view mirror
- Vinyl leather centre console and dashboard panel

INFOTAINMENT

- AM / FM / DAB radio, with premium Bose[®] sound system with 9 speakers (includes 2 driver's and 2 passenger's headrest speakers)

SAFETY & SECURITY

- Smart Brake Support - Rear
- Smart keyless entry

PERFORMANCE TECHNOLOGY

- Dynamic Stability Control with Track Mode

[^]Leather refers to centre seat facing and side supports.

Pricing and specification are subject to change. Please speak with your local dealer for latest pricing information.

184PS EXCLUSIVE-LINE

from £33,515



Mazda MX-5 RF 184ps Exclusive-Line in Soul Red Crystal



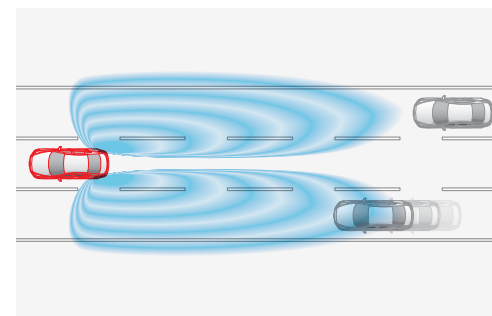
17" Black Diamond cut alloy wheels



Adaptive LED headlights



Reversing camera



Blind Spot Monitoring

STANDARD FEATURES - in addition to 132ps Exclusive-Line, 184ps Exclusive-Line adds:

EXTERIOR

- 17" Black Diamond Cut alloy wheels
- Adaptive LED Headlights
- Reversing camera

SAFETY & SECURITY

- Blind Spot Monitoring (BSM) with Rear Cross Traffic Alert (RCTA) featuring vehicle exit warning

PERFORMANCE TECHNOLOGY

- Asymmetric Limited Slip Differential
- Front strut brace
- Sports suspension featuring Bilstein dampers

HOMURA

from £36,015



Mazda MX-5 Roadster 184ps Homura in Aero Grey



17" Gun Metallic BBS alloy wheels



RECARO® sports seats



Gloss Black electrically-adjustable, heated door mirrors



Two Tone power retractable hardtop (RF models only)

STANDARD FEATURES - in addition to 184ps Exclusive-Line, Homura adds:

EXTERIOR

- 17" Gun Metallic BBS alloy wheels
- Gloss Black electrically-adjustable, heated door mirrors
- Red Brembo front brake calipers, red rear brake calipers
- Two Tone power retractable hardtop (RF models only)

INTERIOR

- RECARO® sports seats trimmed in leather[^] and Alcantara®
- Stainless steel scuff plates featuring 'MX-5' logo

[^]Leather refers to centre seat facing and side supports.

Pricing and specification are subject to change. Please speak with your local dealer for latest pricing information.

PRICING

Skyactiv-G Petrol Roadster	PRICE	VAT	P11D VALUE	FIRST YEAR VED & DVLA FIRST REG FEE*	RECOMMENDED 'ON THE ROAD' RETAIL	CO ₂ EMISSIONS COMBINED (g/km)~	BIK TAX (%)^	2025/26 MONTHLY TAX LIABILITY 20%/40%	INSURANCE GROUP
Roadster 132ps Prime-Line	£23,325.00	£4,665.00	£27,990	£595	£28,585	140	34%	£159/£317	27E
Roadster 132ps Exclusive-Line	£24,991.67	£4,998.33	£29,990	£595	£30,585	140	34%	£170/£340	27E
Roadster 184ps Exclusive-Line	£26,750.00	£5,350.00	£32,100	£1,415	£33,515	153	36%	£193/£385	33A
Roadster 184ps Homura	£28,833.33	£5,766.67	£34,600	£1,415	£36,015	153	36%	£208/£415	33A
Skyactiv-G Petrol Retractable Fastback									
RF 132ps Prime-Line	£24,991.67	£4,998.33	£29,990	£595	£30,585	140	34%	£170/£340	25E
RF 132ps Exclusive-Line	£26,658.33	£5,331.67	£31,990	£595	£32,585	140	34%	£181/£363	25E
RF 184ps Exclusive-Line	£28,416.67	£5,683.33	£34,100	£1,415	£35,515	153	36%	£205/£409	32A
RF 184ps Homura*	£30,500.00	£6,100.00	£36,600	£1,415	£38,015	153	36%	£220/£439	32A

*Jet Black not available on Mazda MX-5 RF 184ps Homura grades.

^ BIK effective from 6 April 2025.

~Figures shown are for comparability purposes and may reflect Euro 6d or Euro 6e testing procedures. Please speak to your Mazda dealer for confirmation; only compare fuel consumption and CO₂ figures with other cars tested to the same technical procedures. These figures may not reflect real life driving results, which will depend upon a number of factors including the accessories fitted (post-registration), variations in weather, driving styles and vehicle load. All figures quoted are derived from the latest WLTP test cycle.

PAINT FINISH OPTIONS



JET BLACK* | £650



ARCTIC WHITE | £0



DEEP CRYSTAL BLUE | £650



MACHINE GREY | £750



SOUL RED CRYSTAL | £950



AERO GREY | £650

Use our car configurator to find
the perfect Mazda MX-5 for you.



BUILD YOUR MAZDA MX-5

*Jet Black not available on Mazda MX-5 RF 184ps Homura grades

Mazda Motors UK reserves the right to introduce changes in pricing, specification and equipment due to its ongoing product development. Colour and trim samples shown in this digital brochure may vary from the actual colours because of the variations of resolutions and colours found in various screen displays, and if printed, limitations within the printing process. Models shown may not be to UK specification. It is recommended that you consult your Mazda dealer when referring to these.

MAZDA MX-5 INTERIOR TRIMS



Premium black cloth and suede effect seat trim with silver stitching
PRIME-LINE



Black perforated leather[^] seat trim with silver stitching
EXCLUSIVE-LINE



Recaro[®] sports seats trimmed in leather[^] and Alcantara[®]
HOMURA



[^]Leather refers to centre seat facing and side supports.

MAZDA MX-5 ALLOY WHEELS



16" Black alloy wheels
PRIME-LINE



16" Bright alloy wheels
132ps EXCLUSIVE-LINE



17" Black Diamond Cut alloy wheels
184ps EXCLUSIVE-LINE



17" Gun Metallic BBS alloy wheels
HOMURA*

Accessory alloy wheels

We offer a range of accessory alloy wheels to help you personalise your Mazda MX-5.

For more information on the entire range of accessories we retail, please [CLICK HERE](#), select your vehicle and visit the 'Options & Accessories' section.

*Front Red Brembo Brake Calipers with rear Calipers painted Red.

OPTIONS & ACCESSORIES



FRONT AIRDAM SKIRT
Roadster & RF - **£411.54**



STAINLESS STEEL SPORT EXHAUST
Roadster & RF - **£1,075.80**



ALLOY PEDAL SET
£251.27



REAR BOOT LID SPOILER
Roadster & RF - **£401.53**

REAR UNDER SKIRT
Roadster & RF - **£476.98**

Options & Accessories: A small selection of our range of accessories are shown within this Price and Specification guide. For more information on the entire range of accessories we retail, please visit www.mazda.co.uk/configurator, select your vehicle and visit the 'Options & Accessories' section. The price shown is a non-binding recommendation of Mazda Motors UK, is subject to change and may not include extras such as painting. Alloy wheel prices do not include tyres. Accessory fitment costs may differ between Mazda dealers. For further information about Mazda Genuine Accessories and latest pricing including any fitment cost differences please contact your local Mazda dealer.

OPTIONS & ACCESSORIES



CENTRE CONSOLE SHELF NET
Roadster & RF - **£80.39**



CLEAR WIND BLOCKER
Roadster - **£264.52**



COLOUR CODED KEY FOB COVER
Roadster & RF - **£69.13**



LUXURY FLOOR MATS
Roadster & RF - **£112.63**



OUTDOOR VEHICLE COVER
Roadster & RF - **£228.14**



17" DIAMOND CUT ALLOY WHEELS
£1,277.44

Options & Accessories: A small selection of our range of accessories are shown within this Price and Specification guide. For more information on the entire range of accessories we retail, please visit www.mazda.co.uk/configurator, select your vehicle and visit the 'Options & Accessories' section. The price shown is a non-binding recommendation of Mazda Motors UK, is subject to change and may not include extras such as painting. Alloy wheel prices do not include tyres. Accessory fitment costs may differ between Mazda dealers. For further information about Mazda Genuine Accessories and latest pricing including any fitment cost differences please contact your local Mazda dealer.

EQUIPMENT

		PRIME-LINE	EXCLUSIVE-LINE 132PS	EXCLUSIVE-LINE 184PS	HOMURA
EXTERIOR					
Brake Calipers:	Front: Red Brembo brake calipers	-	-	-	●
	Rear: Red brake calipers	-	-	-	●
Convertible top:	Black premium cloth soft-top with heated rear glass window, manually-operated (Mazda MX-5 Roadster)	●	●	●	●
	Body colour power retractable hardtop, with heated rear glass window, electrically-operated (Mazda MX-5 RF)	●	●	●	-
	Two-tone power retractable hardtop, with heated rear glass window, electrically-operated (Mazda MX-5 RF)	-	-	-	●
Door mirrors:	Body coloured electrically-adjustable, heated door mirrors	-	●	●	-
	Gloss black electrically-adjustable, heated door mirrors	●	-	-	●
Fashion bar cladding:	Gloss black	●	●	●	●
Headlights:	LED, with automatic headlight levelling	●	●	●	●
	LED daytime running lights	●	●	●	●
	Dusk-sensing headlights	●	●	●	●
	Coming home/leaving home lights	●	●	●	●
	Adaptive Front lighting System (AFS)	-	●	-	-
	Adaptive LED Headlights (ALH)	-	-	●	●
Metallic/Mica/Pearlescent paint:		○	○	○	○*
Parking aids:	Reversing Camera	-	-	●	●
Parking sensors (audible and visual warning):	Rear	●	●	●	●
Rear lights:	Full LED Combination	●	●	●	●
Tailpipes:	Twin	●	●	●	●
Wheels & Tyres:	16" Black alloy wheels with 195/50 R16 tyres	●	-	-	-
	16" Bright alloy wheels with 195/50 R16 tyres	-	●	-	-
	17" Black Diamond Cut alloy wheels with 205/45 R17 tyres	-	-	●	-
	17" Gun Metallic BBS alloy wheels with 205/45 R17 tyres	-	-	-	●
Wipers:	Front, rain-sensing with adjustable sensitivity and speed	●	●	●	●

● = Standard equipment, - = Not available, ○ = Optional as part of a pack.

*RF models are not available in Jet Black paint.

EQUIPMENT

		PRIME-LINE	EXCLUSIVE-LINE 132PS	EXCLUSIVE-LINE 184PS	HOMURA
INTERIOR					
Centre console	Trimmed in vinyl leather	-	●	●	●
Circular air vent surrounds:	Black	●	-	-	-
	Bright finish	-	●	●	●
Dashboard panel:	Black vinyl leather	-	●	●	●
Door panel trim:	Exterior body colour co-ordinated	●	●	●	●
	Black vinyl with silver stitching	●	●	●	●
Gear shift:	Leather-wrapped	●	●	●	●
Handbrake lever:	Leather-wrapped	●	●	●	●
Interior mirror:	Frameless auto-dimming rear-view mirror	-	●	●	●
Interior trim:	Premium black cloth and suede effect seat trim with silver stitching	●	-	-	-
	Black leather perforated seat trim* with silver stitching	-	●	●	-
	RECARO® sports seats trimmed in black leather* and Alcantara® with contrasting grey piping	-	-	-	●
Scuff plates:	Black plastic	●	-	-	-
	Black plastic with stainless insert	-	●	●	-
	Stainless steel scuff plates featuring 'MX-5' logo	-	-	-	●
Seats:	Driver's seat manual slide, recline & tilt adjustment	●	●	●	●
	Passenger's seat manual slide & recline adjustment	●	●	●	●
	Heated with 3-stage setting	●	●	●	●
Steering wheel:	Leather-wrapped	●	●	●	●
	Tilt and telescopic adjustment	●	●	●	●
Storage spaces:	Coinbox located on centre console	●	●	●	●
	Rear centre box with lid (lockable)	●	●	●	●
	Two cupholders (detachable)	●	●	●	●
Windblocker:	Standard type (Convertible only)	●	●	●	●
	Transparent (RF only)	●	●	●	●

● = Standard equipment, - = Not available.

*Leather refers to centre seat facing and side support.

EQUIPMENT

		PRIME-LINE	EXCLUSIVE-LINE 132PS	EXCLUSIVE-LINE 184PS	HOMURA
INFOTAINMENT					
Integrated Bluetooth ^{®1)} :	Allows audio transfer from Bluetooth [®] devices, hands-free calling and easy access to phone contacts via steering wheel controls or Multimedia Commander	●	●	●	●
Mazda Connect (Multimedia System):	AM / FM / DAB radio, with 6 speakers (includes 2 driver's headrest speakers)	●	-	-	-
	AM / FM / DAB radio, with premium Bose [®] sound system with 9 speakers (includes 2 driver's and 2 passenger's headrest speakers)	-	●	●	●
	8.8" Colour centre display	●	●	●	●
	2 x USB Type-C inputs	●	●	●	●
	Steering wheel-mounted audio and Bluetooth [®] controls	●	●	●	●
Mazda Navigation System:	European mapping with alternative route calculations, point of interest search and 7-years free map updates	●	●	●	●
Multimedia Commander:	Located between the driver and front passenger, the Multimedia Commander allows easy control of the advanced connectivity and infotainment system, with information displayed on the 8.8" colour centre display, includes a separate volume control dial	●	●	●	●
Wireless Apple CarPlay [®] & Android Auto [™] :	In-car assistant systems that let you access certain features of your smartphone through Mazda Connect	●	●	●	●

●= Standard equipment, – = Not available. Please visit mazda.co.uk for more information.
¹⁾ Please refer to www.mazdahandsfree.co.uk for the latest information regarding compatibility and functionality of mobile and audio devices.

		PRIME-LINE	EXCLUSIVE-LINE 132PS	EXCLUSIVE-LINE 184PS	HOMURA
COMFORT AND CONVENIENCE					
Accessory Power Outlet		●	●	●	●
Air-conditioning:	Climate control	●	●	●	●
Cruise control with manual speed adjustment		●	●	●	●
Intelligent Speed Assist (ISA):	A driver operated speed-limiting system that works in conjunction with Traffic Sign Recognition (TSR) to help keep drivers from exceeding the speed limit unintentionally.	●	●	●	●
Electric windows:	With one-touch auto down	●	●	●	●
Engine start / stop button:	Allows the driver to start or stop the cars engine by the press of a button	●	●	●	●
Interior Lighting:	Interior courtesy light	●	●	●	●
Sun visors:	Driver's and passenger's with covered vanity mirrors and driver's ticket holder	●	●	●	●

●= Standard equipment, – = Not available.

EQUIPMENT

		PRIME-LINE	EXCLUSIVE-LINE 132PS	EXCLUSIVE-LINE 184PS	HOMURA
PERFORMANCE TECHNOLOGY					
Dynamic Stability Control (DSC)		●	-	-	-
Dynamic Stability Control (DSC) with Track Mode		-	●	●	●
Front strut brace		-	-	●	●
Kinematic Posture Control (KPC)	Applies a very small amount of brake force to the inner wheel during cornering, the resulting brake force pulls the body down, suppressing body roll to improve cornering	●	●	●	●
Asymmetric Limited Slip Differential		-	-	●	●
Sports suspension featuring Bilstein dampers		-	-	●	●

●= Standard equipment, - = Not available.

		PRIME-LINE	EXCLUSIVE-LINE 132PS	EXCLUSIVE-LINE 184PS	HOMURA
SAFETY AND SECURITY					
Airbags:	Front dual stage driver and single stage front passenger	●	●	●	●
	Driver & passenger seat side airbags	●	●	●	●
	Passenger airbag deactivation system (auto switch)	●	●	●	●
Anti-lock Braking System (ABS)		●	●	●	●
Blind Spot Monitoring (BSM) with Rear Cross Traffic Alert (RCTA):	Uses a system of sensors to alert the driver when a vehicle enters a blind spot with vehicle exit warning	-	-	●	●
Deployable Hood System (DHS):	Active Bonnet - raises at the rear when a collision with a pedestrian is detected, creating a space between itself and the engine.	●	●	●	●
Driver Attention Alert (DAA):	Designed to reduce accidents caused by inattentiveness due to driver fatigue. The system watches inputs and the vehicle's movements in the early stages before fatigue is a factor.	●	●	●	●
Emergency Stop Signalling (ESS)		●	●	●	●
Emergency tyre repair kit		●	●	●	●
Hill Launch Assist (HLA):	When pulling away on an incline, HLA helps prevent the car from rolling backwards when the driver moves their foot from the brake to the accelerator pedal by maintaining an automatic brake.	●	●	●	●
ISOFIX child seat anchorage; attached to passenger seat		●	●	●	●
Lane-keep Assist System (LAS) with Lane Departure Warning System (LDWS):	The system detects the line markings on the road surface, and instantly warns you in case of unintentional lane departure, whilst also assisting to steer the vehicle to keep within its lane.	●	●	●	●
Pre-crash safety: Smart Brake Support (SBS)	Front (including autonomous emergency braking) (SBS) - designed to reduce the risk of accidents by helping the driver avoid frontal collisions at slow speeds	●	●	●	●
	Rear (SBS-R) - designed to reduce the risk of accidents by helping the driver avoid rear-end collisions at slow speeds	-	●	●	●
Remote central locking with deadlocking and remote boot release		●	●	●	●
Smart keyless entry:	Allows opening and locking of the vehicle without removing the key from your pocket or bag	-	●	●	●
Thatcham accredited alarm and immobiliser		●	●	●	●
Traffic Sign Recognition (TSR)		●	●	●	●
Tyre Pressure Monitoring System (TPMS)		●	●	●	●

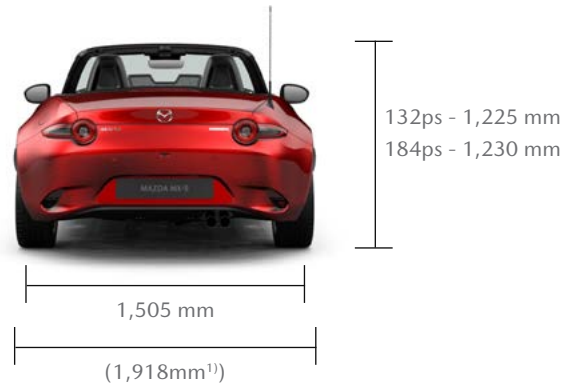
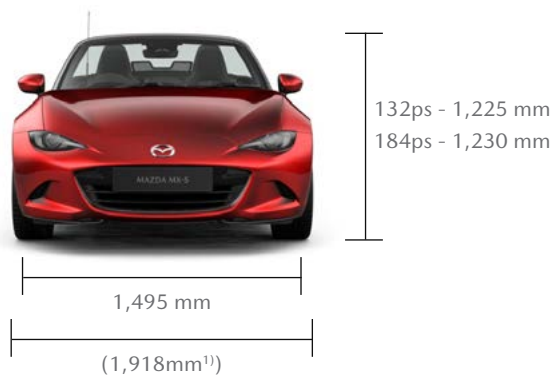
●= Standard equipment, - = Not available.

MAZDA MX-5 ROADSTER TECHNICAL INFORMATION

	1.5 SKYACTIV-G Petrol RWD 132ps Manual	2.0 SKYACTIV-G Petrol RWD 184ps Manual
Model Availability		
Prime-Line	●	-
Exclusive-Line	●	●
Homura	-	●
Dimensions		
Overall length / width ¹⁾ (mm)	3,915 / 1,735 (1,918) ¹⁾	3,915 / 1,735 (1,918) ¹⁾
Height (mm)	1,225	1,230
Wheelbase (mm)	2,310	2,310
Ground clearance between the axles (mm) - unladen	141	149
Front track / Rear track (mm)	1,495 / 1,505	1,495 / 1,505
Front headroom / leg room / shoulder room (mm)	950 / 1,096 / 1,325	950 / 1,096 / 1,325
Cargo volume, acc. to VDA (l) ²⁾ :	130	130
Brake Type - Front & Rear	Ventilated / Solid	Ventilated / Solid
Brake Dimensions - Front / Rear (mm)	258/255	280/280
Steering		
Steering gear	Electric Power Assist Steering (Rack and Pinion)	Electric Power Assist Steering (Rack and Pinion)
Wall-to-wall turning circle (M)	10.0	10.0

¹⁾ Vehicle width excludes mirrors. Figures in brackets includes mirrors.

²⁾ Includes underfloor storage.



MAZDA MX-5 RF TECHNICAL INFORMATION

	1.5 SKYACTIV-G Petrol RWD 132ps Manual	2.0 SKYACTIV-G Petrol RWD 184ps Manual
Model Availability		
Prime-Line	●	-
Exclusive-Line	●	●
Homura	-	●
Dimensions		
Overall length / width ¹⁾ (mm)	3,915 / 1,735 (1,918) ¹⁾	3,915 / 1,735 (1,918) ¹⁾
Height (mm)	1,230	1,235
Wheelbase (mm)	2,310	2,310
Ground clearance between the axles (mm) - unladen	141	147
Front track / Rear track (mm)	1,495 / 1,505	1,495 / 1,505
Front headroom / leg room / shoulder room (mm)	935.7 / 1,096 / 1,325	935.7 / 1,096 / 1,325
Cargo volume, acc. to VDA (l) ²⁾ :	127	127
Brake Type - Front & Rear	Ventilated / Solid	Ventilated / Solid
Brake Dimensions - Front / Rear (mm)	258/255	280/280
Steering		
Steering gear	Electric Power Assist Steering (Rack and Pinion)	Electric Power Assist Steering (Rack and Pinion)
Wall-to-wall turning circle (M)	10.0	10.0

¹⁾ Vehicle width excludes mirrors. Figures in brackets includes mirrors.

²⁾ Includes underfloor storage.



MAZDA MX-5 TECHNICAL INFORMATION

		1.5 SKYACTIV-G Petrol RWD 132ps Manual Roadster	1.5 SKYACTIV-G Petrol RWD 132ps Manual RF	2.0 SKYACTIV-G Petrol RWD 184ps Manual Roadster	2.0 SKYACTIV-G Petrol RWD 184ps Manual RF
Engine					
Displacement (cc)		1496	1496	1998	1998
Bore x Stroke (mm)		74.5 x 85.8	74.5 x 85.8	83.5 x 91.2	83.5 x 91.2
Valves per cylinder		4	4	4	4
Compression ratio		13:1	13:1	13:1	13:1
Fuel Saving Technology					
i-stop system		●	●	●	●
i-ELOOP		●	●	●	●
Performance					
Maximum power output	Total ps (KW) / rpm	132 (97) / 7000	132 (97) / 7000	184 (135) / 7000	184 (135) / 7000
Max. torque (Nm / rpm)		152 / 4500	152 / 4500	205 / 4000	205 / 4000
Acceleration (0-62 mph in seconds)^		8.3	8.7	6.5	6.8
Top Speed (mph)		127	126	136	137
Fuel Economy and CO₂ Emissions					
WLTP fuel consumption mpg (l/100km) ¹⁾	Low	36.2 (7.8)	36.2 (7.8)	30.7 (9.2)	32.1 (8.8)
	Medium	48.7 (5.8)	48.7 (5.8)	44.8 (6.3)	44.1 (6.4)
	High	52.3 (5.4)	52.3 (5.4)	48.7 (5.8)	47.9 (5.9)
	Extra High	42.2 (6.7)	42.2 (6.7)	40.4 (7.0)	39.8 (7.1)
	Combined	45.6 (6.2)	45.6 (6.2)	41.5 (6.8)	41.5 (6.8)
WLTP CO ₂ emissions ¹⁾ (g/km)		140	140	153	153
EC emission level		Euro Stage 6	Euro Stage 6	Euro Stage 6	Euro Stage 6
Recommended fuel		Unleaded 95 RON	Unleaded 95 RON	Unleaded 95 RON	Unleaded 95 RON
Fuel tank capacity (litres)		45	45	45	45
Weights					
Maximum Kerb weight (kg) incl. driver (75kg)		1,106	1,137	1,128	1,171
Permitted gross vehicle weight (kg)	Total	1,230	1,280	1,260	1,305
	Front/rear	625 / 605	635 / 645	645 / 615	645 / 660

¹⁾ Figures shown are for comparability purposes and may reflect Euro 6d or Euro 6e testing procedures. Please speak to your Mazda dealer for confirmation; only compare fuel consumption and CO₂ figures with other cars tested to the same technical procedures. These figures may not reflect real life driving results, which will depend upon a number of factors including the accessories fitted (post-registration), variations in weather, driving styles and vehicle load. All figures quoted are derived from the latest WLTP test cycle.

SKYACTIV ENGINE TECHNOLOGY

e-SKYACTIV G

Both the 1.5 132ps and 2.0 184ps Skyactiv-G engines are highly efficient direct-injection petrol engines that achieve impressive engine efficiency thanks to the high-compression combustion, resulting in excellent fuel economy and low CO₂ emissions.

The 1.5 132ps Skyactiv-G has been designed to provide pure driving pleasure. With the light weight that the 1.5 engine provides, the MX-5 weighs just 1,106kg*. Combined with its 50:50 weight distribution and free-revving engine, this creates a car that moves exactly as the driver expects, with manageable power and lightness that adds to the sheer agility of the car. It is all the MX-5 you will ever need.

However, for those that demand more power, the 184ps version will provide you with the thrills that you are looking for. Our latest 2.0 engine has a redline of 7,500 rpm and will accelerate from 0–62 mph in just 6.5 seconds.



i-ELOOP

Helped by the MX-5's lightness, performance hasn't come at the cost of efficiency with the introduction of Mazda's i-ELOOP kinetic recovery and i-stop (stop-start) technology which is equipped as standard, resulting in a fun, yet economical drive.

The i-ELOOP system recovers energy while decelerating and braking. The recovered energy is used to power electrical systems such as the audio, air conditioning and headlights to put less stress on the engine.

i-stop

While conventional idling stop systems rely on a starter motor to restart the engine, Mazda's i-stop restarts the engine through combustion. The result is a quick and quiet engine re-start compared to other systems and a saving in fuel.



*Mazda MX-5 Roadster 1.5 132ps Prime-Line.

SKYACTIV-VEHICLE DYNAMICS: TRANSMISSIONS, CHASSIS AND BODY



TRANSMISSION

SKYACTIV-MT is a light and compact manual transmission system that combines superior fuel economy with the crisp shifting feel that is expected of a sports car, ensuring perfect control and driver engagement.



SKYACTIV-CHASSIS

Providing a lightweight chassis that delivers driving pleasure and comfort, leading to that pure 'Jinba-ittai' oneness between car and driver. The perfectly fine tuned chassis provides our famed driving experience of agility at low and medium speeds, and stability at motorway speeds for both driving pleasure and comfort.



SKYACTIV-BODY

For a car to excel in its basic functions - accelerate, turn and stop - it must have a lean body, but also be sturdy to ensure safety. Mazda MX-5's body has been designed around these elements leading to a light, rigid and robust body that ensures safe and joyful driving.

When a crash is unavoidable, the Skyactiv-Body delivers excellent collision protection with the unique structure and lightweight high-strength materials ensure the MX-5's body absorbs and disperses impact energy to prevent cabin deformation.

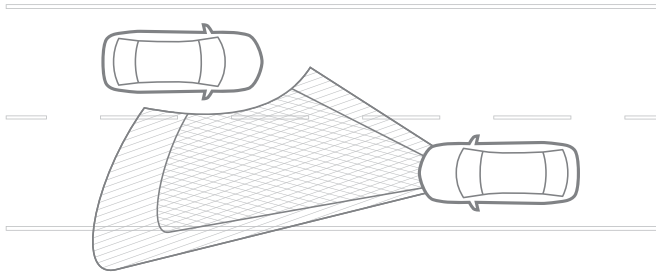
ADVANCED SAFETY TECHNOLOGY



ADAPTIVE FRONT LIGHTING SYSTEM

One of the most important factors in mitigating driver fatigue and increasing safety during night driving is providing a well-illuminated field of view. The Adaptive Front lighting System optimises distribution of light from the headlights according to driving circumstances. Depending on vehicle speed and steering input, the system points the low-beam headlights in the direction the driver intends to travel.

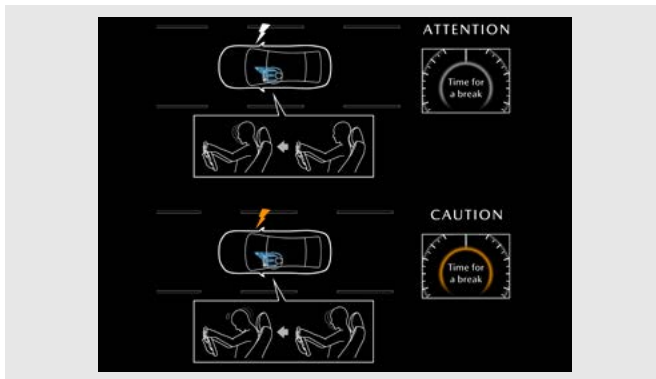
(Standard on 132ps Exclusive-Line models only)



ADAPTIVE LED HEADLIGHTS

Mazda's Adaptive LED Headlights provide the ultimate in headlight technology, lighting up the road ahead as if it were daytime and allowing anybody to enjoy safe and stress-free driving at any time of day. The system increases visibility at night to help drivers stay vigilant by combining three technologies: Wide-range Low Beams which light up a wider area at low speeds, Highway mode which helps you see further when travelling at speed, and Glare-free High Beams which automatically dim part of the illuminated area to avoid dazzling other drivers.

(Standard on 184ps Exclusive-Line & Homura models)



DRIVER ATTENTION ALERT

Designed to reduce accidents caused by inattentiveness due to driver fatigue. The system comes into play at speeds above 40mph and begins to "learn" the driver's habits, watching inputs and the vehicle's movements in the early stages before fatigue is a factor. Later, if the system detects changes in vehicle behaviour that suggest the driver may be losing concentration, it will suggest a rest stop by sounding a chime and displaying a warning in the Multi-information display.

(Standard across the range)

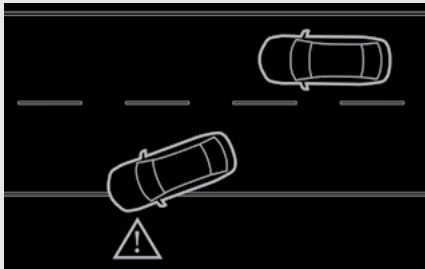
ADVANCED SAFETY TECHNOLOGY



KINEMATIC POSTURE CONTROL

All Mazda MX-5 models feature Kinematic Posture Control (KPC). Mazda's KPC system is designed to increase stability during cornering without impacting the purity of the Mazda MX-5's handling and driver engagement. The KPC system applies a very small amount of brake force to the inner/unloaded rear wheel during cornering. The resulting brake force pulls the body down, suppressing body roll to provide more reassuring cornering.

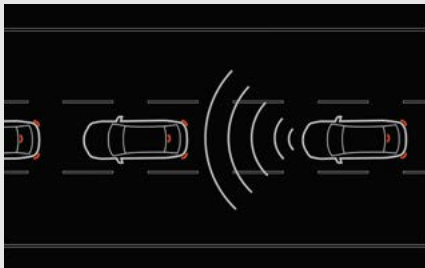
(Standard across the range)



LANE-KEEP ASSIST SYSTEM WITH LANE DEPARTURE WARNING SYSTEM

Designed to prevent your vehicle from inadvertently straying from its lane. A front view camera monitors the road ahead and calculates the car's position relative to the lane markings. If the system detects the vehicle is moving out of its lane unintentionally, the steering wheel will vibrate and an audible alert will sound. The system will also take corrective action to help you stay within the lanes through assisted steering.

(Standard across the range)



SMART BRAKE SUPPORT – FRONT

Alerts the driver of a possible collision using the warning indications in the display and a warning sound if the front radar sensor and Forward Sensing Camera determine that there is the possibility of a collision with a vehicle ahead, pedestrian, or a bicycle. Furthermore, if a collision is unavoidable, the automatic brake control is performed to reduce damage in the event of a collision.

(Standard across the range)

SMART BRAKE SUPPORT – REAR

Reduces damage in the event of a collision by operating the brake control when the system's sensors detect an obstruction at the rear.

(Standard on Exclusive-Line models and up)

VEHICLE TAX RATES

VEHICLE TAX RATES TAX YEAR 2025-26

CO ₂ EMISSIONS FIGURE (G/KM)	ALL CARS FIRST YEAR RATE	ALL CARS STANDARD RATE (12 months)
0	£10	£195
1-50	£110	£195
51-75	£130	£195
76-90	£270	£195
91-100	£350	£195
101-110	£390	£195
111-130	£440	£195
131-150	£540	£195
151-170	£1,360	£195
171-190	£2,190	£195
191-225	£3,300	£195
226-255	£4,680	£195
Over 255	£5,490	£195

First-year rate is paid when first registering a vehicle and is for the first 12 months Vehicle Excise Duty. After the first 12 months, the standard rate applicable at that time is payable. Vehicles with a list price >£40k will be subject to a premium of £425 over the Standard Rate for 5 years from the start of the second licence.

WARRANTY

All Mazda cars registered from 1st September 2025 will benefit from a six-year manufacturer's warranty, or 100,000 miles, whichever comes first.

6
YEAR

MAZDA
WARRANTY



MAZDA SERVICES

The maximum service interval for your Mazda is 12,500 miles or 12 months whichever occurs first, however, the servicing intervals may reduce based on the style of driving and the conditions under which your vehicle is operated.



MAZDA FINANCIAL SERVICES

Mazda Financial Services offers a variety of finance and insurance products to suit the needs of both private and business customers. With our wide range of plans and services, no-one is more committed to delivering complete motoring confidence and total peace of mind than Mazda and Mazda Financial Services.†



MAZDA EXCESS RETURN VOUCHER

When you apply for Free Driveaway Insurance for your new Mazda, you'll also receive a free 1-year Excess Return voucher which pays back up to £250 of your insurance excess cost, regardless of who you're insured with, if you use our Call Mazda First service. If you have a Mazda Excess Return voucher and need to make an insurance claim, simply Call Mazda First before your insurer on 0800 015 0367.



MAZDA INSURANCE

When you buy your new Mazda from a Mazda franchised dealer, we'll give you free comprehensive Driveaway Insurance so you can get on the road there and then. Upgrade to our annual cover and benefit from our Mazda Accident Repair Promise all year round. In the event of an accident, unlike most other insurers, we guarantee to repair your Mazda at a Mazda Approved Bodyshop using only Mazda Genuine Parts. This helps to protect your Mazda's safety rating, resale value and manufacturer warranty. Plus, you'll also get windscreen damage cover, EU cover and a complimentary courtesy car. We'll even pay your cancellation fee if you're insured elsewhere*. Eligibility criteria, terms and conditions apply.

Ask your dealer or call Mazda Insurance on 0330 102 7995.

Get a quote online at www.mazdacarinsurance.co.uk

Mazda Insurance is arranged and administered by Verex Insurance Services Ltd which arranges policies from a panel of insurers.

*Offer not available online. Offer conditions apply.



FREE MAZDA ACCIDENT AFTERCARE

In the event of an accident, Call Mazda First 0800 015 0367 before your insurer for free 24-hour Accident AfterCare and to redeem your £250 Excess Return voucher. Our dedicated case handlers will liaise with your insurer and arrange Mazda Genuine Parts and repairs at a Mazda Approved Bodyshop, keeping your Mazda 100% Mazda and maintaining your Mazda warranties. We'll also provide accident recovery if your Mazda isn't driveable and a free courtesy car during the repair. Terms and conditions apply.

Save 0800 015 0367 to your mobile phone.

TAX FREE – DIPLOMATIC AND MILITARY SALES

For further information contact your Mazda dealer or contact Mazda on 03457 48 48 48.

MOTABILITY

For all Motability enquiries please contact your Mazda dealer or contact Mazda on 03457 48 48 48.

This price list, dated 1 January 2026, supersedes all previous price lists. It includes changes to Vehicle Excise Duty as confirmed in the Autumn 2024 budget affecting recommended 'On the Road' prices. Final prices shown are recommended 'On the Road' prices and are inclusive of number plates, 12 months' Vehicle Excise Duty and first registration fee. Certain models may be subject to changes in CO₂ emission levels and Vehicle Excise Duty Bands. Due to ongoing updates the specification (including fuel consumption, CO₂ emissions and equipment) of the vehicle you order and receive may be different to that detailed in this guide. Please speak to your dealer for the latest information. Images may not be to UK specification. †Subject to status to over 18s. Indemnities may be required. Terms apply. Mazda Financial Services.

STAY IN TOUCH WITH MAZDA MX-5

Visit our website and use the Configurator to create your perfect version of the Mazda MX-5.



BUILD YOUR MAZDA MX-5



Or get answers to all your questions by requesting more information here.



FIND A DEALER



REQUEST A TEST DRIVE



REQUEST A QUOTE



FOLLOW US ON



CRAFTED IN JAPAN

JANUARY 2026

Mazda Motors UK reserves the right to introduce changes in specification and equipment due to its ongoing product development. Prices are subject to change without prior notice. Colour and trim samples shown in this digital brochure may vary from the actual colours because of the variations of resolutions and colours found in various screen displays, and if printed, limitations within the printing process. Models shown may not be to UK specification. It is recommended that you consult your Mazda dealer when referring to these. Apple CarPlay®, Android Auto™ and Bose are registered trademarks in the U.S. and other countries. Used with permission. The Bluetooth® word mark and logos are owned by the Bluetooth SIG, Inc. and any use of such marks by Mazda Motor Company is under licence. Other trademarks and trade names are those of their respective owners.