

# MAZDA2



PRICE AND SPECIFICATION GUIDE



## WELCOME...

You want a car that is perfect for the city. Agile, compact, well equipped and just as at home nipping around town as it is on the motorway. The Mazda2 ticks all those boxes, plus it displays Mazda's award-winning Kodo: Soul of Motion design, provides an exquisitely crafted interior, driver centric cabin, and delivers Mazda's famed driving experience.

The Mazda2 is not only stylish and fun to drive, but in combination with Mazda M Hybrid\*, it produces excellent real world economy and low CO<sub>2</sub> emissions.

The Mazda2 is sure to leave an impression, offering you the freedom of a compact city car without compromise. It's ready to effortlessly go whenever you like, to wherever you need to be.

### Practical and well equipped

The Mazda2 is available in a choice of grades which are created to fit into your lifestyle. No matter if you opt for the Centre-Line or the sporty range-topping Homura Aka, you will have a range of standard features including Mazda Connect infotainment, Apple CarPlay® and Android Auto™ connectivity, LED headlights and Cruise Control as well as a comfortable driver centric cabin.





This Price & Specification Guide has been designed to enable you to discover more about the Mazda2 as well about its key features, what they do, and key technical information making it easy to find the details you need.

So what are you waiting for...



## THE LATEST IN TECHNOLOGY & CONVENIENCE

### MAZDA CONNECT

#### The latest in-car infotainment

Mazda Connect allows for seamless connectivity between you and your Mazda. Information is displayed on a beautiful & clear 8-inch central screen which is perfectly positioned at eye level.

Access vehicle information and settings, entertainment options including DAB Radio, connect your smartphone via Bluetooth to make and receive calls, access your contacts, and utilise the European wide Navigation system which comes with 3-years free map updates.



### MULTIMEDIA COMMANDER

#### Easy to use, driver centric, eyes on the road

The Multimedia Commander provides simple and easy access to the Mazda Connect infotainment system. The tactile feel plays to the senses allowing for ease of use whilst on the move, and more importantly, allows you to keep your eyes on the road.



## APPLE CARPLAY® & ANDROID AUTO™ Smarter, safer way to use your smartphone

With Apple CarPlay®, get easy access to Apple Music, Maps, Messages and make phone calls with Siri through the car's Multimedia Commander or voice commands.

Android Auto™ also allows you to access your favourite music and messaging apps, Google Maps and YouTube Music. Google Assistant voice control helps you send and receive messages, make calls, get directions and plan your day while you keep your eyes safely on the road.

## COLOUR ACTIVE DRIVING DISPLAY Key information displayed at your convenience

Fitted as standard to the 115ps Homura Aka, the colour Active Driving Display is a technology feature that projects key information directly within in the driver's line of sight, which includes vehicle speed, cruise control settings and will provide Satellite Navigation directions in relation to the Mazda Navigation System.



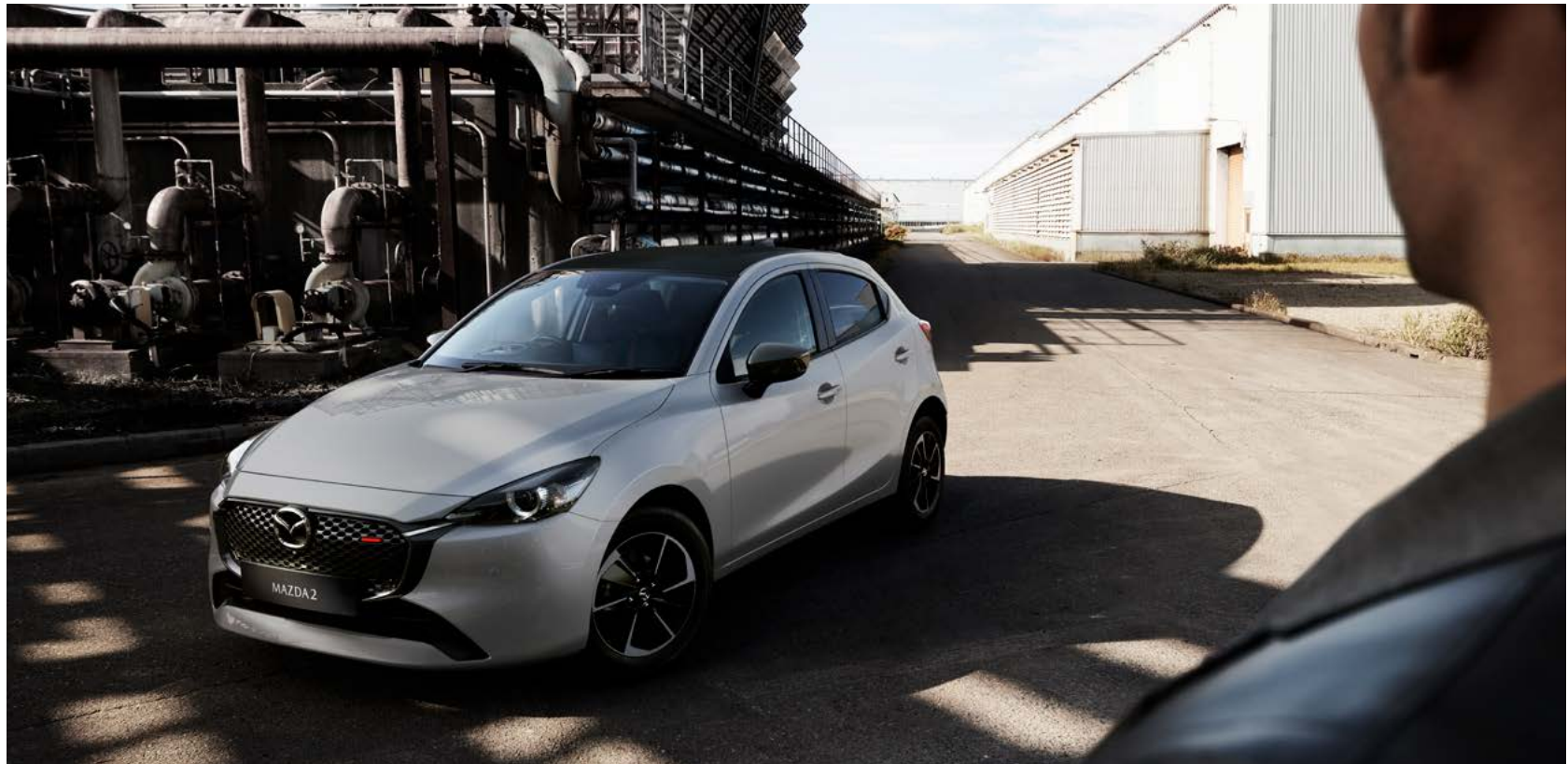


## BUILT FOR THE CITY

### THE PERFECT SIZE TO FIT INTO CITY LIFE

A practical supermini that fits into your everyday needs. Whilst the Mazda2 is able to fit into those tight city parking spaces, it remains bright and airy on the inside to provide a feeling of spaciousness for both you and your passengers.

The range of naturally aspirated engines further enhances the Mazda2's drivability and smoothness to help take away the stress of city life.



MAZDA2 MHEV\* PRICING

e-SKYACTIV G Petrol\*

	PRICE	VAT	P11D VALUE	FIRST YEAR VED & DVLA FIRST REG FEE*	RECOMMENDED 'ON THE ROAD' RETAIL	CO <sub>2</sub> EMISSIONS (G/KM)~	BIK TAX (%)^	2024 / 25 MONTHLY TAX LIABILITY 20% / 40%	INSURANCE GROUP
Mazda2 75ps Centre-Line	£15,312.50	£3,062.50	£18,375	£250	£18,625	109	26%	£80/£159	16E
Mazda2 90ps Centre-Line	£16,062.50	£3,212.50	£19,275	£250	£19,525	107	26%	£84/£167	18A
Mazda2 90ps Homura	£16,320.83	£3,264.17	£19,585	£250	£19,835	107	26%	£85/£170	18A
Mazda2 90ps Exclusive-Line	£16,770.83	£3,354.17	£20,125	£250	£20,375	107	26%	£87/£174	18A
Mazda2 90ps Exclusive-Line Auto	£18,020.83	£3,604.17	£21,625	£275	£21,900	122	29%	£105/£209	14E
Mazda2 90ps Homura Aka	£17,604.17	£3,520.83	£21,125	£250	£21,375	107	26%	£92/£183	18A
Mazda2 90ps Homura Aka Auto	£18,854.17	£3,770.83	£22,625	£275	£22,900	122	29%	£109/£219	14E
Mazda2 115ps Homura Aka	£19,641.67	£3,928.33	£23,570	£275	£23,845	113	27%	£106/£212	21A

\*e-Skyactiv G & MHEV feature on 90ps manual and 115ps manual models only. 75ps manual & 90ps automatic models are Skyactiv-G & Non-MHEV.  
~Figures shown are for comparability purposes; only compare fuel consumption and CO<sub>2</sub> figures with other cars tested to the same technical procedures. These figures may not reflect real life driving results, which will depend upon a number of factors including the accessories fitted (post-registration), variations in weather, driving styles and vehicle load. All figures quoted are derived from the latest WLTP test cycle.

\*First year rate Vehicle Excise Duty as of 1 April 2024, includes £55 DVLA first registration fee. ^BIK effective from 6 April 2024.  
Pricing and specification are subject to change. Please speak with your local dealer for latest pricing information.

## MAZDA2 GRADE HIGHLIGHTS

### 75PS CENTRE-LINE from £18,625

STANDARD FEATURES:

#### EXTERIOR

- 15" Silver Metallic alloy wheels
- Body coloured electrically-adjustable, heated, auto power-folding door mirrors
- Front grille with Jet Black/Colour coordinated lower panel with Yellow accent and gloss black Signature Wing
- Front rain-sensing wipers
- LED Headlights with auto levelling
- Coming home / leaving home lights
- Dusk sensing headlights
- Halogen daytime running lights
- Rear body coloured bumper with black lower mouldings featuring Yellow accent
- Rear parking sensors

#### INTERIOR

- 60:40 fold flat rear seats
- Leather-wrapped gear shift
- Leather-wrapped handbrake lever
- Leather-wrapped steering wheel
- Premium Black cloth seat trim

#### INFOTAINMENT

- AM / FM / DAB radio, with 6 speakers and AUX input
- Integrated Bluetooth®
- Mazda Connect multimedia system with 8" Colour centre display and Multimedia Commander
- Mazda Navigation System with European mapping and 3-years free map updates
- USB inputs
- Wireless Apple CarPlay® & wired Android Auto™

#### COMFORT AND CONVENIENCE

- Auto-dimming rear view mirror
- Climate-control air-conditioning
- Cruise Control with adjustable speed limiter
- Electric windows

#### SAFETY AND SECURITY

- Hill Launch Assist
- Remote central locking with deadlocking

### 90PS CENTRE-LINE from £19,525

IN ADDITION TO 75ps CENTRE-LINE, 90ps CENTRE-LINE ADDS:

#### COMFORT AND CONVENIENCE

- Mazda M Hybrid (MHEV)

#### SAFETY AND SECURITY

- Advanced Smart City Brake Support - Front
- Lane-keep Assist System with Lane Departure Warning System



Model shown: Mazda2 75ps Centre-Line in Ceramic White.

Due to specification updates, please confirm with your dealer whether the vehicle you will receive is equipped with specification detailed in this guide. Pricing and specification are subject to change. Please speak with your local dealer for latest pricing information.

### 90PS EXCLUSIVE-LINE from £20,375

IN ADDITION TO 90ps CENTRE-LINE, EXCLUSIVE-LINE ADDS:

#### EXTERIOR

- 16" Bright alloy wheels
- Chrome exhaust trim
- Rear privacy glass
- Signature LED daytime running lights
- Body coloured Shark Fin antenna

#### INTERIOR

- Steering wheel mounted paddle shift (automatic transmission models only)

#### COMFORT AND CONVENIENCE

- Drive selection switch (automatic transmission models only)
- Mazda M Hybrid (MHEV) (manual transmission models only)
- Reversing camera

#### SAFETY AND SECURITY

- Smart keyless entry



Model shown: Mazda2 90ps Exclusive-Line in Air Stream Blue.



## HOMURA from £19,835

IN ADDITION TO 90ps CENTRE-LINE, HOMURA ADDS:

### EXTERIOR

- 16" Black Metallic alloys wheels
- Black electrically-adjustable, heated, auto power-folding door mirrors
- Black Honeycomb grille with Red accent and gloss black finish Signature Wing
- Rear body coloured bumper with black lower mouldings featuring Red accent
- Black Shark Fin antenna

### INTERIOR

- Black cloth trim with Red accents

### COMFORT AND CONVENIENCE

- Mazda M Hybrid
- Reversing camera



Model shown: Mazda2 90ps Homura in Aero Grey.

## HOMURA AKA from £21,375

IN ADDITION TO HOMURA, 90ps HOMURA AKA ADDS:

### EXTERIOR

- 16" Black Metallic Machined alloys wheels
- Chrome exhaust trim
- Rear privacy glass
- Signature LED daytime running lights
- Black roof film

### INTERIOR

- Half Black leather, Half Black cloth seat trim with red accents
- Heated front seats with 3-stage setting
- Heated leather wrapped steering wheel
- Steering wheel mounted paddle shift (automatic transmission models only)

### COMFORT AND CONVENIENCE

- Drive selection switch (automatic transmission models only)
- Mazda M Hybrid (MHEV) (manual transmission models only)

### SAFETY AND SECURITY

- Smart keyless entry



Model shown: Mazda2 115ps Homura Aka in Soul Red Crystal.

## 115PS HOMURA AKA from £23,845

IN ADDITION TO 90ps HOMURA AKA, 115ps HOMURA AKA ADDS:

### EXTERIOR

- Front & rear parking sensors

### COMFORT AND CONVENIENCE

- 360° View Monitor (front, rear and side cameras)
- Colour Active Driving Display (Head-Up display)

### SAFETY AND SECURITY

- Adaptive LED Headlights
- Blind Spot Monitoring with Rear Cross Traffic Alert
- Driver Attention Alert
- Rear Smart City Brake Support

MAZDA2 INTERIOR TRIMS AND COLOURATION - CENTRE-LINE & EXCLUSIVE-LINE

Both Centre-Line & Exclusive-Line grades feature a Premium Black cloth seat trim alongside three distinct coloured dashboard accents - Black Gloss, White Gloss or Mint Gloss.

These colours have been carefully chosen to match with the exterior of the car in order to provide a harmonious interior.



EXTERIOR COLOUR	BLACK GLOSS
Aero Grey	•
Arctic White	•
Deep Crystal Blue	•
Jet Black	•
Machine Grey	•

EXTERIOR COLOUR	WHITE GLOSS
Platinum Quartz	•
Polymetal Grey	•
Snowflake White	•
Soul Red Crystal	•

EXTERIOR COLOUR	MINT GLOSS
Air Stream Blue	•
Ceramic White	•

Both Centre-Line & Exclusive-Line grades feature a Premium Black cloth seat trim.

## MAZDA2 INTERIOR TRIMS AND COLOURATION - HOMURA & HOMURA AKA

Both Homura & Homura Aka grades provide a more sporty look to the interior with red interior accents which compliment the sporty exterior design.



### HOMURA

Available in combination with all exterior colour options, the Homura features a Black Gloss dashboard panel. The interior features a Black cloth seat trim with Red accents.

### HOMURA AKA

Available in combination with an array of exterior colour options (excluding Jet Black), Homura Aka grades feature a Black soft touch dashboard panel with Red accents. The interior features a half black leather, half black cloth seat trim with Red accents.



MAZDA2 PAINT FINISH OPTIONS - CENTRE-LINE & EXCLUSIVE-LINE



ARCTIC WHITE\*



SNOWFLAKE WHITE



CERAMIC WHITE\*



PLATINUM QUARTZ



AIR STREAM BLUE



POLYMETAL GREY



DEEP CRYSTAL BLUE\*



JET BLACK\*



AERO GREY\*



MACHINE GREY\*



SOUL RED CRYSTAL

Exterior Colours

	BASIC PRICE	VAT	RRP
Arctic White	£0	£0	£0
Snowflake White / Ceramic White / Platinum Quartz / Air Stream Blue / Deep Crystal Blue / Polymetal Grey / Jet Black / Aero Grey	£500.00	£100.00	£600
Machine Grey	£583.33	£116.67	£700
Soul Red Crystal	£708.33	£141.67	£850

\*Features a Jet Black radiator grill colour.

Mazda Motors UK reserves the right to introduce changes in pricing, specification and equipment due to its ongoing product development. Colour and trim samples shown in this digital brochure may vary from the actual colours because of the variations of resolutions and colours found in various screen displays, and if printed, limitations within the printing process. Models shown may not be to UK specification. It is recommended that you consult your Mazda dealer when referring to these.

MAZDA2 PAINT FINISH OPTIONS - HOMURA & HOMURA AKA



ARCTIC WHITE



SNOWFLAKE WHITE



CERAMIC WHITE



PLATINUM QUARTZ



AIR STREAM BLUE



POLYMETAL GREY



DEEP CRYSTAL BLUE



JET BLACK\*



AERO GREY



MACHINE GREY



SOUL RED CRYSTAL

Exterior Colours

	BASIC PRICE	VAT	RRP
Arctic White	£0	£0	£0
Snowflake White / Ceramic White / Platinum Quartz / Air Stream Blue / Deep Crystal Blue / Polymetal Grey / Jet Black / Aero Grey	£500.00	£100.00	£600
Machine Grey	£583.33	£116.67	£700
Soul Red Crystal	£708.33	£141.67	£850

\*Jet Black not available on Homura Aka grades.

Mazda Motors UK reserves the right to introduce changes in pricing, specification and equipment due to its ongoing product development. Colour and trim samples shown in this digital brochure may vary from the actual colours because of the variations of resolutions and colours found in various screen displays, and if printed, limitations within the printing process. Models shown may not be to UK specification. It is recommended that you consult your Mazda dealer when referring to these.

## MAZDA2 ALLOY WHEELS



15" SILVER METALLIC ALLOY WHEELS  
Standard on CENTRE-LINE grade



16" BRIGHT ALLOY WHEELS  
Standard on EXCLUSIVE-LINE grade



16" BLACK METALLIC ALLOY WHEELS  
Standard on HOMURA grade



16" BLACK METALLIC MACHINED ALLOY WHEELS  
Standard on HOMURA AKA grade

## ACCESSORY ALLOY WHEELS

We have a range accessories available including a range of accessory alloy wheels, so that you can make your Mazda2 more individual to you.

For more information on the entire range of accessories we retail, please [CLICK HERE](#), select your vehicle and visit the 'Options & Accessories' section.

Options & Accessories: A small selection of our range of accessories are shown within this Price and Specification guide and are subject to change. For more information on the entire range of accessories we retail, please visit [www.mazda.co.uk/configurator](http://www.mazda.co.uk/configurator), select your vehicle and visit the 'Options & Accessories' section. The price shown is a non-binding recommendation of Mazda Motors UK, is subject to change and may not include extras. Alloy wheel prices do not include tyres. Accessory fitment costs may differ between Mazda dealers. For further information about Mazda Genuine Accessories and latest pricing including any fitment cost differences please contact your local Mazda dealer.



# MAZDA2 SPECIFICATIONS

## Exterior

		Centre-Line	Homura	Exclusive-Line	Homura Aka
Bumpers:	Front body coloured with black lower bezel	•	•	•	•
	Rear body coloured with black lower mouldings featuring Yellow accent	•	-	•	-
	Rear body coloured with black lower mouldings featuring Red accent	-	•	-	•
Door mirrors:	Body coloured electrically-adjustable, heated, auto power-folding door mirrors	•	-	•	-
	Black electrically-adjustable, heated, auto power-folding door mirrors	-	•	-	•
Front Grille:	Jet Black/Colour coordinated lower panel with Yellow accent	•	-	•	-
	Black Honeycomb with Red accent	-	•	-	•
	Gloss Black finish Signature Wing	•	•	•	•
Headlights:	LED, with auto headlight levelling	•	•	•	•
	Coming home / leaving home lights	•	•	•	•
	Dusk-sensing headlights	•	•	•	•
	Halogen daytime running lights	•	•	-	-
	Signature LED daytime running lights	-	-	•	•
	Adaptive LED Headlights (ALH)	-	-	-	• <sup>1</sup>
Metallic/Mica/Pearlescent paint		O	O	O	O
Parking sensors:	Rear	•	•	•	•
	Front	-	-	-	• <sup>1</sup>
Privacy glass:	Rear side and rear windows	-	-	•	•
Black roof film		-	-	-	•
Shark-fin antenna	Body coloured	-	-	•	-
	Black	-	•	-	•
Tailpipes:	Single - Chrome tip	-	-	•	•
Wheels & tyres:	15" Silver Metallic alloy wheels with 185/65 R15 tyres	•	-	-	-
	16" Black Metallic alloy wheels with 185/60 R16 tyres	-	•	-	-
	16" Bright alloy wheels with 185/60 R16 tyres	-	-	•	-
	16" Black Metallic Machined alloy wheels with 185/60 R16 tyres	-	-	-	•
Wipers:	Front, rain-sensing with adjustable sensitivity and speed	•	•	•	•
	Rear	•	•	•	•

• = Standard equipment; - = Not available; O = Option available at additional cost; <sup>1</sup> = Available on 115ps Homura Aka models only.

## Interior

		Centre-Line	Homura	Exclusive-Line	Homura Aka
Air vent accents:	Black & White	•	-	•	-
	Black & Red	-	•	-	•
Dashboard panel:	White / Black / Mint, gloss	•	-	•	-
	Black, gloss	-	•	-	-
	Black soft touch with red stitching	-	-	-	•
Gear shift:	Leather-wrapped	•	•	•	•
Grab handles:	Front passenger and two rear, with coat hooks	•	•	•	•
Handbrake lever:	Leather-wrapped	•	•	•	•
Interior trim:	Premium Black cloth seat trim	•	-	•	-
	Black cloth trim with Red accents	-	•	-	-
	Half Black leather, Half Black cloth seat trim with red accents	-	-	-	•
Meter set display:	Trip computer	•	•	•	•
	Analogue speedometer / Digital rev counter	•	•	•	• <sup>2</sup>
	Digital speedometer / Analogue rev counter	-	-	-	• <sup>1</sup>
Seats (Front):	Driver's and Passenger's seat, manual slide, recline and height adjustment	•	•	•	•
	Heated front seats with 3-stage setting	-	-	-	•
Seats (Rear):	60:40 split fold down rear seats	•	•	•	•
	Three height-adjustable head restraints	•	•	•	•
Steering wheel:	Leather-wrapped	•	•	•	•
	Telescopic and tilt adjustment	•	•	•	•
	Heated	-	-	-	•
	Paddle shift for automatic transmission	-	-	•	•
Storage spaces:	Centre storage with two cupholders	•	•	•	•
	Door pockets (driver and front passenger)	•	•	•	•
	Glovebox	•	•	•	•
	Seatback pocket (located on rear of front passenger seat)	•	•	•	•

• = Standard equipment; - = Not available; O = Option available at additional cost; <sup>1</sup> = Available on 115ps Homura Aka models only; <sup>2</sup> = Available on 90ps Homura Aka models only.

## Infotainment

		Centre-Line	Homura	Exclusive-Line	Homura Aka
Apple CarPlay® & Android Auto™	Wireless Apple CarPlay® & wired Android Auto™ - In-car assistant systems that let you access certain features of your phone through Mazda Connect	•	•	•	•
Integrated Bluetooth®:	Allows audio transfer from Bluetooth® devices, hands-free calling and easy access to phone contacts via steering wheel controls or Multimedia Commander	•	•	•	•
Mazda Connect (Multimedia System):	AM / FM / DAB radio with 6 speakers	•	•	•	•
	8" Colour touch-screen centre display	•	•	•	•
	Steering wheel-mounted audio and Bluetooth® controls	•	•	•	•
	AUX input	•	•	•	•
	USB input x 2	•	•	•	•
Mazda Navigation System:	European mapping with alternative route calculations, point of interest search and 3-years free map updates	•	•	•	•
Multimedia Commander:	Located between the driver and front passenger, the Multimedia Commander allows easy control of the advanced connectivity and infotainment system, with information displayed on the 8" colour touch-screen, includes a separate volume control dial	•	•	•	•

• = Standard equipment; - = Not available.

Please refer to [www.mazdahandsfree.co.uk](http://www.mazdahandsfree.co.uk) for the latest information regarding compatibility and functionality of mobile devices.

## Comfort and Convenience

		Centre-Line	Homura	Exclusive-Line	Homura Aka
Air-conditioning:	Climate-control air-conditioning	•	•	•	•
Cruise control with manual speed adjustment and adjustable speed limiter		•	•	•	•
Drive selection switch (Automatic only):	When the 'Sport' mode is selected, vehicle's response against accelerator operation is enhanced. This provides additional quick acceleration which may be needed to safely make manoeuvres such as lane changes, merging onto motorways, or passing other vehicles	-	-	•	•
Electric windows:	Front and rear, with one-touch auto down / up for driver's window	•	•	•	•
Engine start / stop button		•	•	•	•
G-Vectoring Control Plus (GVC Plus):	Provides better handling and a smoother ride. Aids in emergency avoidance manoeuvres and offers more control in various situations.	•	•	•	•
Head-up Display - Colour Active Driving Display	(Colour head-up display) featuring vehicle speed including warnings, turn-by-turn navigation and Cruise Control information.	-	-	-	• <sup>1</sup>
Interior Lighting:	Interior courtsey light, with integrated spotlight	•	•	•	•
Interior Mirror:	Auto-dimming rear-view mirror	•	•	•	•
Luggage compartment:	Light	•	•	•	•
Parking aids:	Reversing camera	-	•	•	•
	360° View Monitor (front, rear and side cameras)	-	-	-	• <sup>1</sup>
Sun visors:	Driver's and front passenger's with covered vanity mirror and driver's ticket holder	•	•	•	•

• = Standard equipment; - = Not available; <sup>1</sup> = Available on 115ps Homura Aka models only.



## Safety & Security

		Centre-Line	Homura	Exclusive-Line	Homura Aka
Airbags:	Front dual stage driver and single stage front passenger	•	•	•	•
	Front side airbags	•	•	•	•
	Front and rear curtain airbags	•	•	•	•
	Front passenger airbag cut-off switch	•	•	•	•
Anti-lock braking system (ABS)		•	•	•	•
Blind Spot Monitoring (BSM) with Rear Cross Traffic Alert (RCTA)		-	-	-	• <sup>1</sup>
Driver Attention Alert (DAA)	Designed to reduce accidents caused by inattentiveness due to driver fatigue. The system watches inputs and the vehicle's movements in the early stages before fatigue is a factor.	-	-	-	• <sup>1</sup>
Dynamic Stability Control (DSC)		•	•	•	•
Emergency Stop Signalling system (ESS)		• <sup>2</sup>	•	•	•
Emergency tyre repair kit		•	•	•	•
Hill Launch Assist (HLA)	When taking off on an incline, HLA helps prevent the car from rolling backwards when the driver moves thier foot from the brake to the accelerator pedal by maintaining an automatic brake.	•	•	•	•
ISOFIX child seat anchorage; attached to outer rear seats		•	•	•	•
Lane-keep Assist System (LAS) with Lane Departure Warning System (LDWS)	The system detects the line markings on the road surface and instantly warns you in case of unintentional lane departure, whilst also assisting to steer the vehicle to keep it within its lane.	• <sup>2</sup>	•	•	•
Pre-crash safety: Advanced Smart City Brake Support (SCBS)	Front (including autonomous emergency braking) (SCBS)	• <sup>2</sup>	•	•	•
	Rear (SCBS-R)	-	-	-	• <sup>1</sup>
Remote central locking with deadlocking		•	•	•	•
Smart keyless entry	Allows opening and locking of the vehicle without removing the key from your pocket or bag	-	-	•	•
Seatbelts:	Front, 3-point (ELR) x 2 with pre-tensioners	•	•	•	•
	Rear, 3-point (ELR) x 3	•	•	•	•
Seatbelt reminder audible warning:	Driver, passenger and rear seats	•	•	•	•
Thatcham accredited alarm and immobiliser		•	•	•	•
Traction Control System (TCS)		•	•	•	•
Tyre Pressure Monitoring System (TPMS)		•	•	•	•

• = Standard equipment; - = Not available; O = Option available at additional cost; <sup>1</sup> = Available on 115ps Homura Aka models only; <sup>2</sup> = Not available on 75ps models.

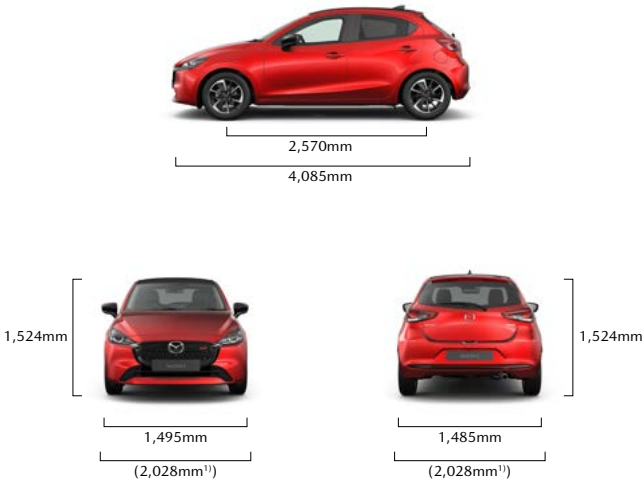
# MAZDA2 TECHNICAL INFORMATION

Model availability	1.5 SKYACTIV-G Petrol	1.5 e-SKYACTIV G Petrol	1.5 SKYACTIV-G Petrol	1.5 e-SKYACTIV G Petrol
	75ps Manual	90ps Manual	90ps Automatic	115ps Manual
Centre-Line	•	•	-	-
Exclusive-Line	-	•	•	-
Homura	-	•	-	-
Homura Aka	-	•	•	•

Dimensions		
Overall length / width <sup>1)</sup> / height (mm)		4,085 / 1,695 (2,028) / 1,524
Wheelbase (mm)		2,570
Ground clearance between the axles – unladen (mm)		152
Front track / Rear track (mm)		1,495 / 1,485
Front headroom / leg room / shoulder room (mm)		984 / 1,063 / 1,352
Rear headroom / leg room / shoulder room (mm)		945 / 881 / 1,273
Cargo volume, acc. to VDA (l) <sup>2)</sup> :	5-seat mode to belt line including underfloor storage	255
	2-seat mode including underfloor storage	887
Brake Type - Front / Rear		Ventilated Disc / Drum
Brake Dimensions (mm) - Front / Rear		258 / 200
Steering		
Steering gear		Electric Power Assist Steering (Rack and Pinion)
Wall-to-wall turning circle (M)		10.2m (15" alloys) / 10.5m (16" alloys)

<sup>1)</sup> Vehicle width excludes mirrors. Figures in brackets are for width including mirrors.

<sup>2)</sup> Includes underfloor storage.



5-door Hatchback		1.5 SKYACTIV-G Petrol	1.5 e-SKYACTIV G Petrol	1.5 SKYACTIV-G Petrol	1.5 e-SKYACTIV G Petrol
		75ps Manual	90ps Manual	90ps Automatic	115ps Manual
Displacement (cc)		1496	1496	1496	1496
Bore x Stroke (mm)		74.5 x 85.8	74.5 x 85.8	74.5 x 85.8	74.5 x 85.8
Valves per cylinder		4	4	4	4
Compression ratio		15:1	15:1	15:1	15:1
FUEL SAVING TECHNOLOGY					
i-stop (saves fuel by switching off the engine when the car stops)		•	•	•	•
Mazda M Hybrid 24-volt battery to support the engine which helps improve your fuel economy and reduce emissions		-	•	-	•
PERFORMANCE					
Maximum power output ps (KW) / rpm		75 (55) / 6,000	90 (66) / 6,000	90 (66) / 6,000	115 (85) /6,000
Max. torque (Nm / rpm)		143/3,500	151/3,500	151/3,500	151/3,500
Acceleration (0-62 mph in seconds)		11.3	9.8	12.1	9.1
Top speed (mph)		106	114	110	124
FUEL ECONOMY AND CO <sub>2</sub> EMISSIONS					
WLTP fuel consumption <sup>1)</sup> mpg (l/100km)	Low	48.7 (5.8)	49.6 (5.7)	44.1 (6.4)	47.1 (6.0)
	Medium	61.4 (4.6)	62.8 (4.5)	56.5 (5.0)	58.9 (4.8)
	High	67.3 (4.2)	68.9 (4.1)	60.1 (4.7)	65.7 (4.3)
	Extra High	55.4 (5.1)	55.4 (5.1)	47.9 (5.9)	53.3 (5.3)
	Combined	58.9 (4.8)	60.1 (4.7)	52.3 (5.4)	56.5 (5.0)
WLTP CO <sub>2</sub> emissions <sup>1)</sup> (g/km)		109	107	122	113
EC emission level		Euro Stage6			
Recommended fuel		Unleaded 95 RON			
Fuel tank capacity (litres)		44			
WEIGHTS					
Maximum Kerb weight (kg) incl. driver (75kg)		1,145	1,158	1,161	1,158
Permitted gross vehicle weight (kg)	Total	1,532	1,533	1,548	1,533
	Front/rear	804 / 728	820 / 713	827 / 721	820 / 713
Towing limit <sup>2)</sup> (kg):	Braked	900	900	900	900
	Unbraked	545	550	550	550
Maximum roof load (kg)		50	50	50	50

<sup>1)</sup> Figures shown are for comparability purposes; only compare fuel consumption and CO<sub>2</sub> figures with other cars tested to the same technical procedures. These figures may not reflect real life driving results, which will depend upon a number of factors including the accessories fitted (post-registration), variations in weather, driving styles and vehicle load. All figures quoted are derived from the latest WLTP test cycle.

<sup>2)</sup> Towing capacity is based on a 12% gradient and tested in accordance with 92/21/EEC as amended by 95/48/EC.



## MAZDA2 ACCESSORIES AND EQUIPMENT OVERVIEW

We know how complicated buying a new car can be when it comes to deciphering the latest technology. That's why we have taken the time to provide you with some clarity on what's available on the Mazda2, to help you make the right choice as to which grade will suit your lifestyle best.

Within this section we provide information on just some of our latest options & accessories, details on our engine & hybrid technology, as well as information on our Skyactiv-Vehicle Dynamics and our Advanced Safety Technology.

We don't only make cars that are involving and easy to operate, we do this with our Price & Specification guide too to enable you to make the best decision.

Then all that is left to do is to experience the Mazda2 for yourself. To find your local dealer and to arrange a Test Drive, [CLICK HERE](#)



## OPTIONS & ACCESSORIES



ALUMINIUM PEDAL SET WITH ALLOY FOOT REST  
MANUAL - £192.32  
AUTOMATIC - £179.64



BOOT LINER  
£68.00



BRILLIANT BLACK SHARK FIN ANTENNA  
£159.18



BRILLIANT BLACK REAR ROOF SPOILER  
£363.12



CHROME TIP TAILPIPE EXTENSION  
£73.16

Options & Accessories: A small selection of our range of accessories are shown within this Price and Specification guide and are subject to change. For more information on the entire range of accessories we retail, please visit [www.mazda.co.uk/configurator](http://www.mazda.co.uk/configurator), select your vehicle and visit the 'Options & Accessories' section. The price shown is a non-binding recommendation of Mazda Motors UK, is subject to change and may not include extras such as painting. Alloy wheel prices do not include tyres. Accessory fitment costs may differ between Mazda dealers. For further information about Mazda Genuine Accessories and latest pricing including any fitment cost differences please contact your local Mazda dealer.

## SKYACTIV ENGINE TECHNOLOGY

### SKYACTIV-G

The 1.5 Skyactiv-G engine is available in two power outputs for Mazda2, 75ps and 90ps Auto. Each are highly-efficient direct-injection petrol engines that achieve impressive engine efficiency thanks to the high compression combustion, resulting in excellent fuel economy and low CO<sub>2</sub> emissions.

In fact, Mazda2 has been awarded 3.5 stars for fuel efficiency and emissions by Green NCAP, which is an independent initiative which promotes the development of cars which are clean, energy efficient and not harmful to the environment. Mazda's Skyactiv-G 1.5 75ps version was tested and is one of only three internal combustion vehicles without a full hybrid system to be awarded 3.5 stars. Only full battery-electric (BEV) and plug-in electric (PHEV) models have achieved higher ratings.



### e-SKYACTIV G WITH MAZDA M HYBRID\*

When our efficient Skyactiv-G engines are paired with our Mazda M Hybrid technology, we call this e-Skyactiv G. Our innovative evolution of hybrid car technology uses four main components to capture energy that is normally wasted during braking. It stores that energy and uses it to assist the engine and power the car's electrical systems, meaning you can drive further on a tank of fuel whilst also contributing to lower CO<sub>2</sub> emissions and other particulates.

The result is a car that delivers outstanding performance, low running costs and strong environmental credentials.

\*Available on 90ps & 115ps manual transmissions only.

## SKYACTIV-VEHICLE DYNAMICS: TRANSMISSIONS, CHASSIS AND BODY

### TRANSMISSIONS

SKYACTIV-MT is a light and compact manual transmission system that combines superior fuel economy with the crisp shifting feel of a sports car, ensuring perfect control.

Also available is Mazda's highly efficient, 6-speed SKYACTIV-DRIVE automatic transmission. Featuring the best attributes of CVT, Dual Clutch and conventional automatic transmissions, SKYACTIV-DRIVE provides you with a direct feel with smooth gear shifts leading to great fuel economy.\*



### SKYACTIV-CHASSIS

Providing a lightweight chassis that delivers driving pleasure and comfort, leading to that pure 'Jinba-ittai' oneness between car and driver. The perfectly fine tuned chassis provides our famed driving experience of agility at low and medium speeds, and stability at motorway speeds for both driving pleasure and comfort.



### SKYACTIV-BODY

For a car to excel in its basic functions - accelerate, turn and stop - it must have a lean body, but also be sturdy to ensure safety. Mazda's body has been designed around these elements leading to a light, rigid and robust body that ensures safe and joyful driving.



\*SKYACTIV-DRIVE Automatic Transmission is unavailable on selected grades.

## ADVANCED TECHNOLOGY



### COLOUR ACTIVE DRIVING DISPLAY (HEAD-UP DISPLAY)

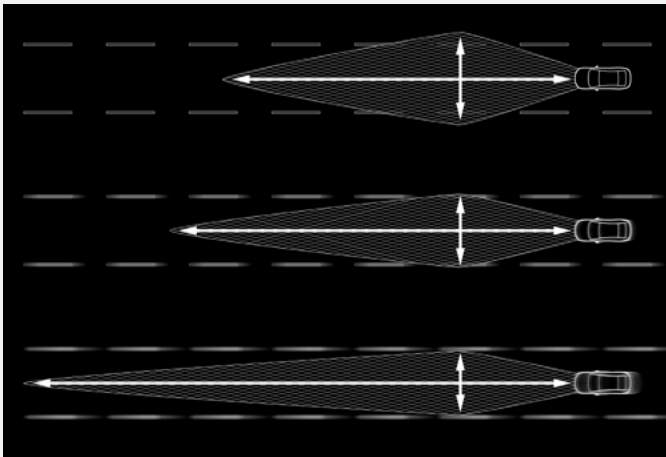
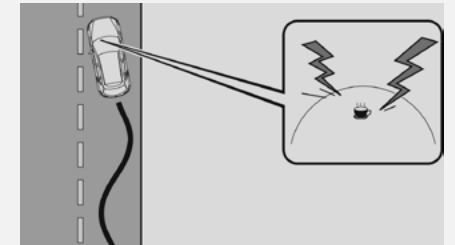
The system projects full-colour information directly onto the pop-up perspex combiner within the driver's line of sight. The displayed information is divided into upper and lower sections: driving information, including navigation, turn-by-turn direction and speed limit information displayed in the upper section, while vehicle status, including current speed and advanced safety equipment status, is displayed in the lower section.

(Standard on 115ps Homura Aka only)

### DRIVER ATTENTION ALERT

Designed to reduce accidents caused by inattentiveness due to driver fatigue. The system comes into play at speeds above 40mph and begins to "learn" the driver's habits, watching inputs and the vehicle's movements in the early stages before fatigue is a factor. Later, if the system detects changes in vehicle behaviour that suggest the driver may be losing concentration, it will suggest a rest stop by sounding a chime and displaying a warning in the Multi-Information Display.

(Standard on 115ps Homura Aka only)



### ADAPTIVE LED HEADLIGHTS

Mazda's Adaptive LED Headlights provide the ultimate in headlight technology, lighting up the road ahead as if it were daytime and allowing anybody to enjoy safe and stress-free driving at any time of day. The system increases visibility at night to help drivers stay vigilant by combining three technologies: Wide-range Low Beams which light up a wider area at low speeds, Highway mode which helps you see further when travelling at speed, and Glare-free High Beams which automatically dim part of the illuminated area to avoid dazzling other drivers.

(Standard on 115ps Homura Aka only)

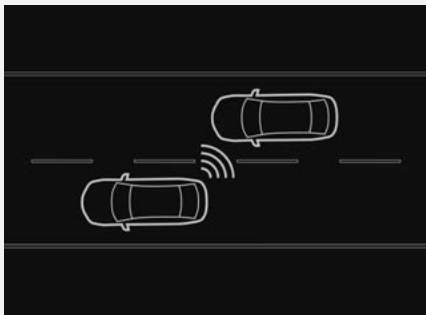
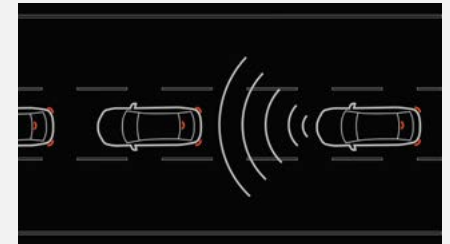


## ADVANCED TECHNOLOGY

### ADVANCED SMART CITY BRAKE SUPPORT – FRONT

Alerts the driver of a possible collision using the warning indications in the display and a warning sound if the front radar sensor and Forward Sensing Camera determine that there is the possibility of a collision with a vehicle ahead, pedestrian, or a bicycle. Furthermore, if a collision is unavoidable, the automatic brake control is performed to reduce damage in the event of a collision. In addition, when the driver depresses the brake pedal, the brakes are applied firmly and quickly to assist.

(Standard on 90ps Centre-Line and above)



### BLIND SPOT MONITORING (BSM) WITH REAR CROSS TRAFFIC ALERT (RCTA)

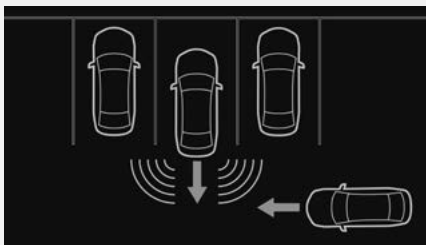
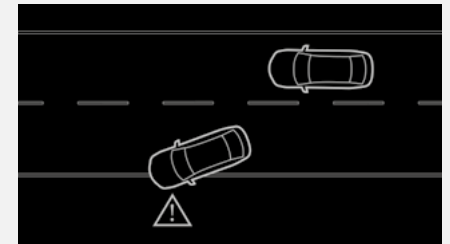
BSM uses radars mounted in the rear bumper to detect vehicles approaching from behind and in the adjacent lane. It alerts the driver to the presence of vehicles in the blind spot on either side by displaying an icon in the appropriate door mirror. If the driver indicates to change lanes with a vehicle in the blind spot, the icon flashes and a warning beep is sounded. RCTA is designed to help you make sure it's safe to start backing up. The system uses the same radars and indicators as BSM to watch for vehicles coming from both sides and alert the driver when they come near.

(Standard on 115ps Homura Aka only)

### LANE KEEP ASSIST SYSTEM WITH LANE DEPARTURE WARNING SYSTEM

Designed to prevent your vehicle from inadvertently straying from its lane. A front view camera monitors the road ahead and calculates the car's position relative to the lane markings. If the system detects the vehicle is moving out of its lane unintentionally, the steering wheel will vibrate and an audible alert will sound. The system will also take corrective action to help you stay within the lanes through assisted steering.

(Standard on 90ps Centre-Line and above)



### SMART CITY BRAKE SUPPORT – REAR

Reduces damage in the event of a collision by operating the brake control when the system's sensors detect an obstruction at the rear.

(Standard on 115ps Homura Aka only)

VEHICLE TAX RATES

VEHICLE TAX RATES Tax year 2024-25

CO <sub>2</sub> EMISSIONS FIGURE (G/KM)	PETROL & RDE2 DIESEL - FIRST YEAR RATE	ALTERNATIVE FUEL CARS - FIRST YEAR RATE	STANDARD RATE (12 months)	
			PETROL/DIESEL CARS	ALTERNATIVE FUEL CARS
0	£0	£0	£190	£180
1-50	£10	£0	£190	£180
51-75	£30	£20	£190	£180
76-90	£135	£125	£190	£180
91-100	£175	£165	£190	£180
101-110	£195	£185	£190	£180
111-130	£220	£210	£190	£180
131-150	£270	£260	£190	£180
151-170	£680	£670	£190	£180
171-190	£1,095	£1,085	£190	£180
191-225	£1,650	£1,640	£190	£180
226-255	£2,340	£2,330	£190	£180
Over 255	£2,745	£2,735	£190	£180

First-year rate is paid when first registering a vehicle and is for the first 12 months Vehicle Excise Duty. After the first 12 months, the standard rate applicable at that time is payable. Vehicles with a list price >£40k will be subject to a premium of £410 over the Standard Rate for 5 years from the start of the second licence.



## MAZDA FINANCIAL SERVICES

Mazda Financial Services offers a variety of finance and insurance products to suit the needs of both private and business customers. With our wide range of plans and services, no-one is more committed to delivering complete motoring confidence and total peace of mind than Mazda and Mazda Financial Services<sup>†</sup>.

## MAZDA INSURANCE

When you buy your new Mazda from a Mazda franchised dealer, we'll give you free comprehensive Driveaway Insurance so you can get on the road there and then. Upgrade to our annual cover and benefit from our Mazda Accident Repair Promise all year round. In the event of an accident, unlike most other insurers, we guarantee to repair your Mazda at a Mazda Approved Bodyshop using only Mazda Genuine Parts. This helps to protect your Mazda's safety rating, resale value and manufacturer warranty. Plus, you'll also get windscreen damage cover, EU cover and a complimentary courtesy car. We'll even pay your cancellation fee if you're insured elsewhere\*. Eligibility criteria, terms and conditions apply.

Ask your dealer or call Mazda Insurance on 0330 102 7995.

Get a quote online at [www.mazdacarinsurance.co.uk](http://www.mazdacarinsurance.co.uk)

Mazda Insurance is arranged and administered by Verex Insurance Services Ltd which arranges policies from a panel of insurers.

\*Offer not available online. Offer conditions apply.

## MAZDA SERVICES

The maximum service interval for your Mazda is 12,500 miles or 12 months whichever occurs first, however, the servicing intervals may reduce based on the style of driving and the conditions under which your vehicle is operated.

## MAZDA EXCESS RETURN VOUCHER

When you apply for Free Driveaway Insurance for your new Mazda, you'll also receive a free 1-year Excess Return voucher which pays back up to £250 of your insurance excess cost, regardless of who you're insured with, if you use our Call Mazda First service. If you have a Mazda Excess Return voucher and need to make an insurance claim, simply Call Mazda First before your insurer on 0800 015 0367.

## FREE MAZDA ACCIDENT AFTERCARE

In the event of an accident, Call Mazda First 0800 015 0367 before your insurer for free 24-hour Accident AfterCare and to redeem your £250 Excess Return voucher.

Our dedicated case handlers will liaise with your insurer and arrange Mazda Genuine Parts and repairs at a Mazda Approved Bodyshop, keeping your Mazda 100% Mazda and maintaining your Mazda warranties. We'll also provide accident recovery if your Mazda isn't driveable and a free courtesy car during the repair. Terms and conditions apply.

Save 0800 015 0367 to your mobile phone.

## TAX FREE – DIPLOMATIC AND MILITARY SALES

For further information contact your Mazda dealer or contact Mazda on 03457 48 48 48.

## MOTABILITY

For all Motability enquiries please contact your Mazda dealer or contact Mazda on 03457 48 48 48.

This price list, dated 2 January 2025, supersedes all previous price lists. It includes changes to Vehicle Excise Duty as confirmed in the October 2018 budget affecting recommended 'On the Road' prices. Final prices shown are recommended 'On the Road' prices and are inclusive of number plates, 12 months' Vehicle Excise Duty and first registration fee. Certain models may be subject to changes in CO<sub>2</sub> emission levels and Vehicle Excise Duty Bands. Due to ongoing updates the specification (including fuel consumption, CO<sub>2</sub> emissions and equipment) of the vehicle you order and receive may be different to that detailed in this guide. Please speak to your dealer for the latest information. Images may not be to UK specification. <sup>†</sup>Subject to status to over 18s. Indemnities may be required. Terms apply. Mazda Financial Services.

## CRAFTED IN JAPAN

Mazda Motors UK reserves the right to introduce changes in specification and equipment due to its ongoing product development. Prices are subject to change without prior notice. Colour and trim samples shown in this digital brochure may vary from the actual colours because of the variations of resolutions and colours found in various screen displays, and if printed, limitations within the printing process. Models shown may not be to UK specification. It is recommended that you consult your Mazda dealer when referring to these. Apple CarPlay®, Android Auto™ and Bose are registered trademarks in the U.S. and other countries. Used with permission. The Bluetooth® word mark and logos are owned by the Bluetooth SIG, Inc. and any use of such marks by Mazda Motor Company is under licence. Other trademarks and trade names are those of their respective owners.

[www.mazda.co.uk](http://www.mazda.co.uk)

Mazda Helpline: 03457 48 48 48

Effective from 2 January 2025