

# MAZDA MX-5



PRICE AND SPECIFICATION GUIDE



WELCOME...

Every Mazda we create is designed around one thing, you. Each car isn't just engineered to move you literally, but to do so emotionally. We call this Jinba Ittai, meaning a sense of oneness between car and driver. Inspired by Japanese tradition it symbolises the oneness between horse and rider, something entirely natural, like a true extension of your being that brings pure driving pleasure.

The pure essence of this can be found in our best-selling two seat sports car, the Mazda MX-5. Featuring a front-engine, rear-wheel drive layout, signature 50:50 weight distribution, famed 6-speed gearbox and free-revving choice of engine's, it's guaranteed to put a smile on your face every time you press the ignition switch. Don't just take our word for it, the Mazda MX-5 has won countless awards, and continues to do so.



## CHOICE OF BODYSTYLES

There are few pleasures in life like driving on a sunny day with the top down, just absorbing the scenery and feeling the breeze. So which bodystyle will you choose?

Will it be the soft top roadster with a roof that can be retracted in seconds, providing that classic roadster look?

Or will it be the eye-catching Retractable Fastback (RF) with its three-piece power retractable roof, open-top motoring is but 13 seconds away. The quick-opening, fully automatic hard top offers greater thermal and sound insulation, providing extra refinement.

## CHOICE OF ENGINES

The MX-5 is offered with a light and free-revving 1.5 132ps Skyactiv-G engine to provide pure driving pleasure. The emphasis behind the engine and driving characteristics creates a car that moves exactly as the driver expects, with manageable power and lightness that adds to the sheer agility of the car.

However, if you want something with more performance, then the 2.0 184ps Skyactiv-G will satisfy your speed-seeking thrills. Coupled with an Asymmetric Limited Slip Differential, sports suspension with Bilstein dampers and a front strut brace for extra rigidity, it makes the ideal choice for those seeking a more track focused sports car.



This Price & Specification Guide has been designed to enable you to discover more about the Mazda MX-5, its key features and what they do, as well as key technical specifications, making it easy to find the information you need.

So, what are you waiting for...





## THE LATEST IN TECHNOLOGY & CONVENIENCE

### MAZDA CONNECT

#### The latest in-car infotainment

Mazda Connect allows for seamless connectivity between you and your Mazda. Information is displayed on a beautiful & clear central 8.8" screen which is perfectly positioned at eye level.

Access vehicle information and settings, entertainment options including DAB Radio, connect your smartphone via Bluetooth to make and receive calls, access your contacts, and utilise the European wide Navigation system which comes with 7-years free map updates.



### MULTIMEDIA COMMANDER

#### Easy to use, driver centric, eyes on the road

The Multimedia Commander provides simple and easy access to the Mazda Connect infotainment system. The tactile feel plays to the senses allowing for ease of use whilst on the move, and more importantly, allows you to keep your eyes on the road.



## APPLE CARPLAY® & ANDROID AUTO™ Smarter, safer way to use your smartphone

With Apple CarPlay®, get easy access to Apple Music, Maps, Messages and make phone calls with Siri through the car's Multimedia Commander or voice commands.

Android Auto™ also allows you to access your favourite music and messaging apps, Google Maps and Google Play Music. Google Assistant voice control helps you send and receive messages, make calls, get directions and plan your day while you keep your eyes safely on the road.

## BOSE PREMIUM SOUND SYSTEM

Made to move you

Fitted as standard to our Exclusive-Line and Homura grades, the high performance speakers make you feel like you're at the front row of your favourite concert.

Featuring speakers in both the driver & passenger headrests, the Bose Sound System in the MX-5 will make you feel even more immersed in whatever you're listening to, roof up or down.





## MAZDA MX-5 PRICING

### Skyactiv-G Petrol Roadster

	PRICE	VAT	P11D VALUE	FIRST YEAR VED & DVLA FIRST REG FEE*	RECOMMENDED 'ON THE ROAD' RETAIL	CO <sub>2</sub> EMISSIONS (G/KM)~	BIK TAX (%)^	2024/25 MONTHLY TAX LIABILITY 20%/40%	INSURANCE GROUP
Roadster 132ps Prime-Line	£23,075.00	£4,615.00	£27,690	£325	£28,015	140	33%	£152/£305	27E
Roadster 132ps Exclusive-Line	£24,741.67	£4,948.33	£29,690	£325	£30,015	140	33%	£163/£327	27E
Roadster 184ps Exclusive-Line	£26,416.67	£5,283.33	£31,700	£735	£32,435	153	35%	£185/£370	33A
Roadster 184ps Homura	£28,416.67	£5,683.33	£34,100	£735	£34,835	153	35%	£199/£398	33A

### Skyactiv-G Petrol Retractable Fastback

RF 132ps Prime-Line	£24,658.33	£4,931.67	£29,590	£325	£29,915	140	33%	£163/£325	25E
RF 132ps Exclusive-Line	£26,325.00	£5,265.00	£31,590	£325	£31,915	140	33%	£174/£347	25E
RF 184ps Exclusive-Line	£28,000.00	£5,600.00	£33,600	£735	£34,335	153	35%	£196/£392	32A
RF 184ps Homura*	£30,250.00	£6,050.00	£36,300	£735	£37,035	153	35%	£212/£424	32A

\*Jet Black not available on Mazda MX-5 RF 184ps Homura grades.

~Figures shown are for comparability purposes and may reflect Euro 6d or Euro 6e testing procedures. Please speak to your Mazda dealer for confirmation; only compare fuel consumption and CO<sub>2</sub> figures with other cars tested to the same technical procedures. These figures may not reflect real life driving results, which will depend upon a number of factors including the accessories fitted (post-registration), variations in weather, driving styles and vehicle load. All figures quoted are derived from the latest WLTP test cycle.



## MAZDA MX-5 GRADE HIGHLIGHTS

### PRIME-LINE from £28,015

STANDARD FEATURES:

#### EXTERIOR

- 16" Black alloy wheels
- Black premium cloth soft-top (Roadster)
- Body colour power retractable hardtop (RF)
- LED headlights with LED daytime running lights
- LED combination rear lights
- Coming home/leaving home lights
- Piano Black fashion bars
- Piano Black electrically-adjustable, heated door mirrors
- Rain-sensing front wipers
- Rear parking sensors
- Twin exhaust system

#### INTERIOR

- Body-colour co-ordinated interior upper door trim
- Leather-wrapped handbrake lever
- Leather-wrapped gear shift
- Leather-wrapped steering wheel
- Premium black cloth and suede effect seat trim with silver stitching
- Heated seats

#### INFOTAINMENT

- AM/FM/DAB radio, with 6 speakers (includes 2 driver's headrest speakers) and 2 USB Type-C inputs
- Integrated Bluetooth®
- Mazda Connect multimedia system with 8.8" Colour Centre display and Multimedia Commander
- Mazda Navigation System with European mapping and 7-years free map updates
- Wireless Apple CarPlay® & Android Auto™
- Steering wheel-mounted audio and Bluetooth® controls

#### COMFORT AND CONVENIENCE

- Climate control air-conditioning
- Cruise control with Intelligent Speed Assistance (ISA)
- Electric windows with one-touch auto down
- Engine start / stop buttons

#### SAFETY AND SECURITY

- Deployable Hood System
- Driver Attention Alert
- Hill Launch Assist
- Traffic Sign Recognition
- Lane-keep Assist System with Lane Departure Warning System
- Remote central locking with deadlocking
- Front Smart Brake Support (with autonomous emergency braking)
- Thatcham accredited alarm and immobiliser

### 132PS EXCLUSIVE-LINE from £30,015

IN ADDITION TO PRIME-LINE, 132PS EXCLUSIVE-LINE ADDS:

#### EXTERIOR

- 16" Bright alloy wheels
- Body coloured electrically-adjustable, heated door mirrors
- Adaptive Front lighting System

#### INTERIOR

- Black perforated leather trim with silver stitching
- Black plastic scuff plates with stainless insert
- Frameless, auto-dimming rear-view mirror
- Vinyl leather centre console & dashboard panel

#### INFOTAINMENT

- AM / FM / DAB radio, with premium Bose® sound system with 9 speakers (includes 2 driver's and 2 passenger's headrest speakers)

#### SAFETY AND SECURITY

- Smart Brake Support - Rear
- Smart keyless entry

#### PERFORMANCE TECHNOLOGY

- Dynamic Stability Control with Track Mode



Model shown: Mazda MX-5 Roadster 132ps Prime-Line in Arctic White.

^Leather refers to centre seat facing and side supports.

Pricing and Specification are subject to change. Please speak with your local dealer for latest pricing information.



Model shown: Mazda MX-5 RF 132ps Exclusive-Line in Machine Grey.



## 184PS EXCLUSIVE-LINE from £32,435

IN ADDITION TO 132PS EXCLUSIVE-LINE,  
184PS EXCLUSIVE-LINE ADDS:

### EXTERIOR

- 17" Black Diamond Cut alloy wheels
- Adaptive LED Headlights
- Reversing camera

### SAFETY AND SECURITY

- Blind Spot Monitoring (BSM) with Rear Cross Traffic Alert (RCTA) featuring vehicle exit warning

### PERFORMANCE TECHNOLOGY

- Asymmetric Limited Slip Differential
- Front strut brace
- Sports suspension featuring Bilstein dampers



Model shown: Mazda MX-5 RF 184ps Exclusive-Line in Soul Red Crystal.

## HOMURA from £34,835

IN ADDITION TO 184PS EXCLUSIVE-LINE,  
HOMURA ADDS:

### EXTERIOR

- 17" Gun Metallic BBS alloy wheels
- Piano Black electrically-adjustable, heated door mirrors
- Red Brembo front brake calipers, red rear brake calipers
- Two Tone power retractable hardtop (RF models only)

### INTERIOR

- RECARO® sports seats trimmed in leather and Alcantara®
- Stainless steel scuff plates featuring 'MX-5' logo



Model shown: Mazda MX-5 Roadster 184ps Homura in Aero Grey.

## MAZDA MX-5 INTERIOR TRIMS AND COLOURATION



PREMIUM BLACK CLOTH AND SUEDE EFFECT SEAT TRIM WITH SILVER STITCHING  
(Standard on Prime-Line)



BLACK PERFORATED LEATHER<sup>^</sup> TRIM WITH SILVER STITCHING  
(Standard on Exclusive-Line)



RECARO<sup>®</sup> SPORTS SEATS TRIMMED IN LEATHER AND ALCANTARA<sup>®</sup>  
(Standard on Homura)



<sup>^</sup>Leather refers to centre seat facing and side supports.

## MAZDA MX-5 PAINT FINISH OPTIONS



JET BLACK\*



ARCTIC WHITE



DEEP CRYSTAL BLUE



MACHINE GREY



SOUL RED CRYSTAL



AERO GREY

### Exterior Colours

	BASIC PRICE	VAT	RRP
Arctic White	£0	£0	£0
Aero Grey / Deep Crystal Blue / Jet Black*	£500.00	£100.00	£600
Machine Grey	£583.33	£116.67	£700
Soul Red Crystal	£708.33	£141.67	£850

\*Jet Black not available on Mazda MX-5 RF 184ps Homura grades

Mazda Motors UK reserves the right to introduce changes in pricing, specification and equipment due to its ongoing product development. Colour and trim samples shown in this digital brochure may vary from the actual colours because of the variations of resolutions and colours found in various screen displays, and if printed, limitations within the printing process. Models shown may not be to UK specification. It is recommended that you consult your Mazda dealer when referring to these.

## MAZDA MX-5 ALLOY WHEELS



16" BLACK ALLOY WHEELS  
Standard on Prime-Line



16" BRIGHT ALLOY WHEELS  
Standard on 132ps Exclusive-Line



17" BLACK DIAMOND CUT ALLOY WHEELS  
Standard on 184ps Exclusive-Line



17" GUN METALLIC BBS ALLOY WHEELS  
Standard on Homura\*

## ACCESSORY ALLOY WHEELS

We have a range accessories available including a range of accessory alloy wheels, so that you can make your Mazda MX-5 more individual to you.

For more information on the entire range of accessories we retail, please [CLICK HERE](#), select your vehicle and visit the 'Options & Accessories' section.

Options & Accessories: A small selection of our range of accessories are shown within this Price and Specification guide. For more information on the entire range of accessories we retail, please visit [www.mazda.co.uk/configurator](http://www.mazda.co.uk/configurator), select your vehicle and visit the 'Options & Accessories' section. The price shown is a non-binding recommendation of Mazda Motors UK, is subject to change and may not include extras. Alloy wheel prices do not include tyres. Accessory fitment costs may differ between Mazda dealers. For further information about Mazda Genuine Accessories and latest pricing including any fitment cost differences please contact your local Mazda dealer.

\*Front Red Brembo Brake Calipers with rear Calipers painted Red.



# MAZDA MX-5 SPECIFICATIONS

## Exterior

		Prime-Line	132ps Exclusive-Line	184ps Exclusive-Line	Homura
Brake Calipers:	Front: Red Brembo brake calipers	-	-	-	•
	Rear: Red brake calipers	-	-	-	•
Convertible top:	Black premium cloth soft-top with heated rear glass window, manually-operated (Mazda MX-5 Roadster)	•	•	•	•
	Body colour power retractable hardtop, with heated rear glass window, electrically-operated (Mazda MX-5 RF)	•	•	•	-
	Two-tone power retractable hardtop, with heated rear glass window, electrically-operated (Mazda MX-5 RF)	-	-	-	•
Door mirrors:	Body coloured electrically-adjustable, heated door mirrors	-	•	•	-
	Piano black electrically-adjustable, heated door mirrors	•	-	-	•
Fashion bar cladding:	Piano black	•	•	•	•
Headlights:	LED, with automatic headlight levelling	•	•	•	•
	LED daytime running lights	•	•	•	•
	Dusk-sensing headlights	•	•	•	•
	Coming home/leaving home lights	•	•	•	•
	Adaptive Front lighting System (AFS)	-	•	-	-
	Adaptive LED Headlights (ALH)	-	-	•	•
Metallic/Mica/Pearlescent paint:		O	O	O	O*
Parking aids:	Reversing Camera	-	-	•	•
Parking sensors (audible and visual warning):	Rear	•	•	•	•
Rear lights:	Full LED Combination	•	•	•	•
Tailpipes:	Twin	•	•	•	•
Wheels & Tyres:	16" Black alloy wheels with 195/50 R16 tyres	•	-	-	-
	16" Bright alloy wheels with 195/50 R16 tyres	-	•	-	-
	17" Black Diamond Cut alloy wheels with 205/45 R17 tyres	-	-	•	-
	17" Gun Metallic BBS alloy wheels with 205/45 R17 tyres	-	-	-	•
Wipers:	Front, rain-sensing with adjustable sensitivity and speed	•	•	•	•

• = Standard equipment; - = Not available; O = Option available at additional cost.

\*RF models are not available in Jet Black paint.

## Interior

		Prime-Line	132ps Exclusive-Line	184ps Exclusive-Line	Homura
Centre console	Trimmed in vinyl leather	-	•	•	•
Circular air vent surrounds:	Black	•	-	-	-
	Chrome	-	•	•	•
Dashboard panel:	Black vinyl leather	-	•	•	•
Door panel trim:	Exterior body colour co-ordinated	•	•	•	•
	Black vinyl with silver stitching	•	•	•	•
Gear shift:	Leather-wrapped	•	•	•	•
Handbrake lever:	Leather-wrapped	•	•	•	•
Interior mirror:	Frameless auto-dimming rear-view mirror	-	•	•	•
Interior trim:	Premium black cloth and suede effect seat trim with silver stitching	•	-	-	-
	Black leather perforated seat trim* with silver stitching	-	•	•	-
	RECARO® sports seats trimmed in black leather and Alcantara® with contrasting grey piping	-	-	-	•
Scuff plates:	Black plastic	•	-	-	-
	Black plastic with stainless insert	-	•	•	-
	Stainless steel scuff plates featuring 'MX-5' logo	-	-	-	•
Seats:	Driver's seat manual slide, recline & tilt adjustment	•	•	•	•
	Passenger's seat manual slide & recline adjustment	•	•	•	•
	Heated with 3-stage setting	•	•	•	•
Steering wheel:	Leather-wrapped	•	•	•	•
	Tilt and telescopic adjustment	•	•	•	•
Storage spaces:	Coinbox located on centre console	•	•	•	•
	Rear centre box with lid (lockable)	•	•	•	•
	Two cupholders (detachable)	•	•	•	•
Windblocker:	Standard type (Convertible only)	•	•	•	•
	Transparent (RF only)	•	•	•	•

• = Standard equipment; - = Not available; O = Option available at additional cost.

\*Leather refers to centre seat facing and side support.

## Infotainment

		Prime-Line	132ps Exclusive-Line	184ps Exclusive-Line	Homura
Integrated Bluetooth <sup>®3)</sup> :	Allows audio transfer from Bluetooth <sup>®</sup> devices, hands-free calling and easy access to phone contacts via steering wheel controls or Multimedia Commander	•	•	•	•
Mazda Connect (Multimedia System):	AM / FM / DAB radio, with 6 speakers (includes 2 driver's headrest speakers)	•	-	-	-
	AM / FM / DAB radio, with premium Bose <sup>®</sup> sound system with 9 speakers (includes 2 driver's and 2 passenger's headrest speakers)	-	•	•	•
	8.8" Colour centre display	•	•	•	•
	2 x USB Type-C inputs	•	•	•	•
	Steering wheel-mounted audio and Bluetooth <sup>®</sup> controls	•	•	•	•
Mazda Navigation System:	European mapping with alternative route calculations, point of interest search and 7-years free map updates	•	•	•	•
Multimedia Commander:	Located between the driver and front passenger, the Multimedia Commander allows easy control of the advanced connectivity and infotainment system, with information displayed on the 8.8" colour centre display, includes a separate volume control dial	•	•	•	•
Wireless Apple CarPlay <sup>®</sup> & Android Auto <sup>™4)</sup> :	In-car assistant systems that let you access certain features of your smartphone through Mazda Connect	•	•	•	•

• = Standard equipment; - = Not available.

<sup>1)</sup> Please refer to [www.mazdahandsfree.co.uk](http://www.mazdahandsfree.co.uk) for the latest information regarding compatibility and functionality of mobile and audio devices.

<sup>2)</sup> Connected Services are a subscription service. A 60-day free trial is included with your navigation system and commences the first time you connect the car to a Wi-Fi hotspot. After the free trial has finished you must purchase a subscription to continue using Connected Services. Please visit [www.mazda.co.uk/mzd-connect/navigation](http://www.mazda.co.uk/mzd-connect/navigation) for more information.

<sup>3)</sup> Requires a compatible mobile device. Please visit [www.mazda.co.uk/mzd-connect](http://www.mazda.co.uk/mzd-connect) for more information.

## Comfort and Convenience

		Prime-Line	132ps Exclusive-Line	184ps Exclusive-Line	Homura
Accessory Power Outlet		•	•	•	•
Air-conditioning:	Climate control	•	•	•	•
Cruise control with manual speed adjustment		•	•	•	•
Intelligent Speed Assist (ISA):	A driver operated speed-limiting system that works in conjunction with Traffic Sign Recognition (TSR) to help keep drivers from exceeding the speed limit unintentionally.	•	•	•	•
Electric windows:	With one-touch auto down	•	•	•	•
Engine start / stop button:	Allows the driver to start or stop the cars engine by the press of a button	•	•	•	•
Interior Lighting:	Interior courtesy light	•	•	•	•
Sun visors:	Driver's and passenger's with covered vanity mirrors and driver's ticket holder	•	•	•	•

• = Standard equipment; - = Not available.

## Performance Technology

		Prime-Line	132ps Exclusive-Line	184ps Exclusive-Line	Homura
Dynamic Stability Control (DSC)		•	-	-	-
Dynamic Stability Control (DSC) with Track Mode		-	•	•	•
Front strut brace		-	-	•	•
Kinematic Posture Control (KPC)	Applies a very small amount of brake force to the inner wheel during cornering, the resulting brake force pulls the body down, suppressing body roll to improve cornering	•	•	•	•
Asymmetric Limited Slip Differential		-	-	•	•
Sports suspension featuring Bilstein dampers		-	-	•	•

• = Standard equipment; - = Not available.

## Safety and Security

		Prime-Line	132ps Exclusive-Line	184ps Exclusive-Line	Homura
Airbags:	Front dual stage driver and single stage front passenger	•	•	•	•
	Driver & passenger seat side airbags	•	•	•	•
	Passenger airbag deactivation system (auto switch)	•	•	•	•
Anti-lock Braking System (ABS)		•	•	•	•
Blind Spot Monitoring (BSM) with Rear Cross Traffic Alert (RCTA):	Uses a system of sensors to alert the driver when a vehicle enters a blind spot with vehicle exit warning	-	-	•	•
Deployable Hood System (DHS):	Active Bonnet - raises at the rear when a collision with a pedestrian is detected, creating a space between itself and the engine.	•	•	•	•
Driver Attention Alert (DAA):	Designed to reduce accidents caused by inattentiveness due to driver fatigue. The system watches inputs and the vehicle's movements in the early stages before fatigue is a factor.	•	•	•	•
Emergency Stop Signalling (ESS)		•	•	•	•
Emergency tyre repair kit		•	•	•	•
Hill Launch Assist (HLA):	When pulling away on an incline, HLA helps prevent the car from rolling backwards when the driver moves their foot from the brake to the accelerator pedal by maintaining an automatic brake.	•	•	•	•
ISOFIX child seat anchorage; attached to passenger seat		•	•	•	•
Lane-keep Assist System (LAS) with Lane Departure Warning System (LDWS):	The system detects the line markings on the road surface, and instantly warns you in case of unintentional lane departure, whilst also assisting to steer the vehicle to keep within its lane.	•	•	•	•
Pre-crash safety: Smart Brake Support (SBS)	Front (including autonomous emergency braking) (SBS) - designed to reduce the risk of accidents by helping the driver avoid frontal collisions at slow speeds	•	•	•	•
	Rear (SBS-R) - designed to reduce the risk of accidents by helping the driver avoid rear-end collisions at slow speeds	-	•	•	•
Remote central locking with deadlocking and remote boot release		•	•	•	•
Smart keyless entry:	Allows opening and locking of the vehicle without removing the key from your pocket or bag	-	•	•	•
Thatcham accredited alarm and immobiliser		•	•	•	•
Traffic Sign Recognition (TSR)		•	•	•	•
Tyre Pressure Monitoring System (TPMS)		•	•	•	•

• = Standard equipment; - = Not available.



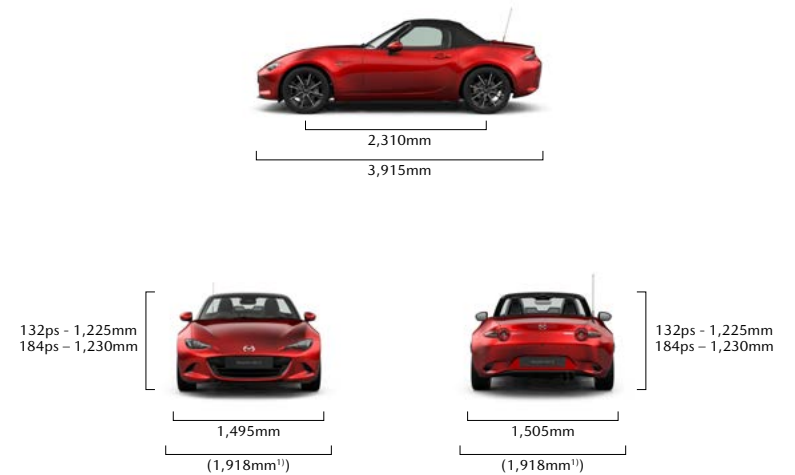
# MAZDA MX-5 ROADSTER TECHNICAL INFORMATION

Model availability	1.5 SKYACTIV-G		2.0 SKYACTIV-G	
	Petrol RWD		Petrol RWD	
	132ps Manual		184ps Manual	
Prime-Line	•		-	
Exclusive-Line	•		•	
Homura	-		•	

Dimensions		
Overall length / width <sup>1)</sup> (mm)	3,915 / 1,735 (1,918) <sup>1)</sup>	
Height (mm)	132ps – 1,225	184ps – 1,230
Wheelbase (mm)	2,310	
Ground clearance between the axles – unladen (mm)	132ps – 141	184ps – 149
Front track / Rear track (mm)	1,495 / 1,505	
Front headroom / leg room / shoulder room (mm)	950 / 1,096 / 1,325	
Cargo volume, acc. to VDA (l) <sup>2)</sup> :	130	
Brake Type - Front / Rear	Ventilated / Solid	
Brake Dimensions (mm) - Front / Rear	132ps – 258/255	184ps – 280/280
Steering		
Steering gear	Electric Power Assist Steering (Rack and Pinion)	
Wall-to-wall turning circle (M)	10.0	

<sup>1)</sup> Vehicle width excludes mirrors. Figures in brackets includes mirrors.

<sup>2)</sup> Includes underfloor storage.



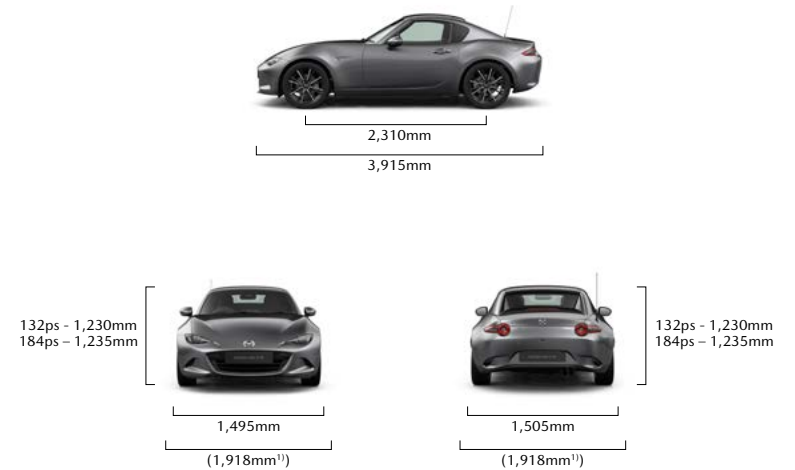
# MAZDA MX-5 RF TECHNICAL INFORMATION

Model availability	1.5 SKYACTIV-G		2.0 SKYACTIV-G	
	Petrol RWD		Petrol RWD	
	132ps Manual		184ps Manual	
Prime-Line	•		-	
Exclusive-Line	•		•	
Homura	-		•	

Dimensions		
Overall length / width <sup>1)</sup> (mm)	3,915 / 1,735 (1,918) <sup>1)</sup>	
Height (mm)	132ps – 1,230	184ps – 1,235
Wheelbase (mm)	2,310	
Ground clearance between the axles – unladen (mm)	132ps – 141	184ps – 147
Front track / Rear track (mm)	1,495 / 1,505	
Front headroom / leg room / shoulder room (mm)	935.7 / 1,096 / 1,325	
Cargo volume, acc. to VDA (l) <sup>2)</sup> :	127	
Brake Type - Front / Rear	Ventilated / Solid	
Brake Dimensions (mm) - Front / Rear	132ps – 258/255	184ps – 280/280
Steering		
Steering gear	Electric Power Assist Steering (Rack and Pinion)	
Wall-to-wall turning circle (M)	10.0	

<sup>1)</sup> Vehicle width excludes mirrors. Figures in brackets includes mirrors.

<sup>2)</sup> Includes underfloor storage.



2-door Roadster/ Retractable Fastback (RF)		1.5 Skyactiv-G		2.0 Skyactiv-G	
		Petrol 132ps		Petrol 184ps	
		Manual		Manual	
Displacement (cc)		1496		1998	
Bore x Stroke (mm)		74.5 x 85.8		83.5 x 91.2	
Valves per cylinder		4		4	
Compression ratio		13:1		13:1	
<b>FUEL SAVING TECHNOLOGY</b>					
i-stop system	Saves fuel by switching off the engine when the car stops	•		•	
i-ELOOP	Continuously recovers kinetic energy as the vehicle decelerates and reuses it as electricity	•		•	
<b>PERFORMANCE</b>					
Maximum power output (ps (KW) / rpm)		132 (97) / 7000		184 (135) / 7000	
Max. torque (Nm / rpm)		152 / 4500		205 / 4000	
		ROADSTER	RF	ROADSTER	RF
Acceleration (0-62 mph in seconds)		8.3	8.7	6.5	6.8
Top Speed (mph)		127	126	136	137
<b>FUEL ECONOMY AND CO<sub>2</sub> EMISSIONS</b>					
WLTP fuel consumption <sup>1)</sup> mpg (l/100km)	Low	36.2 (7.8)		30.7 (9.2)	
	Medium	48.7 (5.8)		44.8 (6.3)	
	High	52.3 (5.4)		48.7 (5.8)	
	Extra High	42.2 (6.7)		40.4 (7.0)	
	Combined	45.6 (6.2)		41.5 (6.8)	
WLTP CO <sub>2</sub> emissions <sup>1)</sup> (g/km)		140		153	
EC emission level		Euro Stage 6		Euro Stage 6	
Recommended fuel		Unleaded 95 RON		Unleaded 95 RON	
Fuel tank capacity (litres)		45		45	
		ROADSTER	RF	ROADSTER	RF
Maximum kerb weight (kg) incl. driver (75kg) <sup>2)</sup>		1,106	1,137	1,128	1,171
Permitted gross vehicle weight (kg)	Total	1,230	1,280	1,260	1,305
	Front/rear	625 / 605	635 / 645	645 / 615	645 / 660

• = Standard equipment, – = Not available.

<sup>1)</sup> Figures shown are for comparability purposes and may reflect Euro 6d or Euro 6e testing procedures. Please speak to your Mazda dealer for confirmation; only compare fuel consumption and CO<sub>2</sub> figures with other cars tested to the same technical procedures. These figures may not reflect real life driving results, which will depend upon a number of factors including the accessories fitted (post-registration), variations in weather, driving styles and vehicle load. All figures quoted are derived from the latest WLTP test cycle.

## MAZDA MX-5 ACCESSORIES AND EQUIPMENT OVERVIEW

We know how complicated buying a new car can be when it comes to deciphering the latest technology. That's why we have taken the time to provide you with some clarity on what's available on the Mazda MX-5, to help you make the right choice as to which grade will suit your lifestyle best.

Within this section we provide information on just some of our latest options & accessories, details on our engine technology, as well as information on our Skyactiv-Vehicle Dynamics and our Advanced Safety Technology.

We don't only make cars that are involving and easy to operate, we do this with our Price & Specification guide too to enable you to make the best decision.

Then all that is left to do is to experience the Mazda MX-5 for yourself. To find your local dealer and to arrange a Test Drive, [CLICK HERE](#)





## OPTIONS & ACCESSORIES



FRONT AIRDAM SKIRT  
Roadster & RF - £384.26



STAINLESS STEEL SPORT EXHAUST  
Roadster & RF - £996.50



ALLOY PEDAL SET  
Manual - £238.50  
Automatic - £218.69



REAR BOOT LID SPOILER  
Roadster & RF - £378.97

REAR AIRDAM SKIRT  
Roadster & RF - £447.53

Options & Accessories: A small selection of our range of accessories are shown within this Price and Specification guide. For more information on the entire range of accessories we retail, please visit [www.mazda.co.uk/configurator](http://www.mazda.co.uk/configurator), select your vehicle and visit the 'Options & Accessories' section. The price shown is a non-binding recommendation of Mazda Motors UK, is subject to change and may not include extras. Alloy wheel prices do not include tyres. Accessory fitment costs may differ between Mazda dealers. For further information about Mazda Genuine Accessories and latest pricing including any fitment cost differences please contact your local Mazda dealer.

## OPTIONS & ACCESSORIES



CENTRE CONSOLE SHELF NET  
Roadster & RF - £76.07



CLEAR WIND BLOCKER  
Roadster - £248.74



COLOUR CODED KEY FOB COVER  
Roadster & RF - £132.00



LUXURY FLOOR MATS  
Roadster & RF - £103.81



OUTDOOR VEHICLE COVER  
Roadster & RF - £210.29



17" DIAMOND CUT ALLOY WHEELS  
£1,295.80

Options & Accessories: A small selection of our range of accessories are shown within this Price and Specification guide. For more information on the entire range of accessories we retail, please visit [www.mazda.co.uk/configurator](http://www.mazda.co.uk/configurator), select your vehicle and visit the 'Options & Accessories' section. The price shown is a non-binding recommendation of Mazda Motors UK, is subject to change and may not include extras. Alloy wheel prices do not include tyres. Accessory fitment costs may differ between Mazda dealers. For further information about Mazda Genuine Accessories and latest pricing including any fitment cost differences please contact your local Mazda dealer.

## SKYACTIV ENGINE TECHNOLOGY

### SKYACTIV-G

Both the 1.5 132ps and 2.0 184ps Skyactiv-G engine's are highly-efficient direct-injection petrol engines that achieve impressive engine efficiency thanks to the high compression combustion, resulting in excellent fuel economy and low CO<sub>2</sub> emissions.

The 1.5 132ps Skyactiv-G has been designed to provide pure driving pleasure. With the light weight that the 1.5 engine provides, the MX-5 weighs just 1,106kg\*. Combined with its 50:50 weight distribution and free-revving engine, this creates a car that moves exactly as the driver expects, with manageable power and lightness that adds to the sheer agility of the car. It is all the MX-5 you will ever need.

However, for those that demand more power, the 184ps version will provide you with the thrills that you are looking for. Our latest 2.0 engine has a redline of 7,500 rpm and will accelerate from 0-62mph from just 6.5 seconds.



### i-ELOOP

Helped by the MX-5's lightness, performance hasn't come at the cost of efficiency with the introduction of Mazda's i-ELOOP kinetic recovery and i-stop (stop-start) technology which is equipped as standard, resulting in a fun, yet economical drive.

The i-ELOOP system recovers energy while decelerating and braking. The recovered energy is used to power electrical systems such as the audio, air conditioning and headlights to put less stress on the engine.

### i-stop

While conventional idling stop systems rely on a starter motor to restart the engine, Mazda's i-stop restarts the engine through combustion. The result is a quick and quiet engine re-start compared to other systems and a saving in fuel.



\*Mazda MX-5 Roadster 1.5 132ps Prime-Line.

## SKYACTIV-VEHICLE DYNAMICS: TRANSMISSION, CHASSIS AND BODY

### TRANSMISSION

SKYACTIV-MT is a light and compact manual transmission system that combines superior fuel economy with the crisp shifting feel that is expected of a sports car, ensuring perfect control and driver engagement.



### SKYACTIV-CHASSIS

Providing a lightweight chassis that delivers driving pleasure and comfort, leading to that pure 'Jinba-ittai' oneness between car and driver. The perfectly fine tuned chassis provides our famed driving experience of agility at low and medium speeds, and stability at motorway speeds for both driving pleasure and comfort.



### SKYACTIV-BODY

For a car to excel in its basic functions - accelerate, turn and stop - it must have a lean body, but also be sturdy to ensure safety. Mazda MX-5's body has been designed around these elements leading to a light, rigid and robust body that ensures safe and joyful driving.

When a crash is unavoidable, the Skyactiv-Body delivers excellent collision protection with the unique structure and lightweight high-strength materials ensure the MX-5's body absorbs and disperses impact energy to prevent cabin deformation.



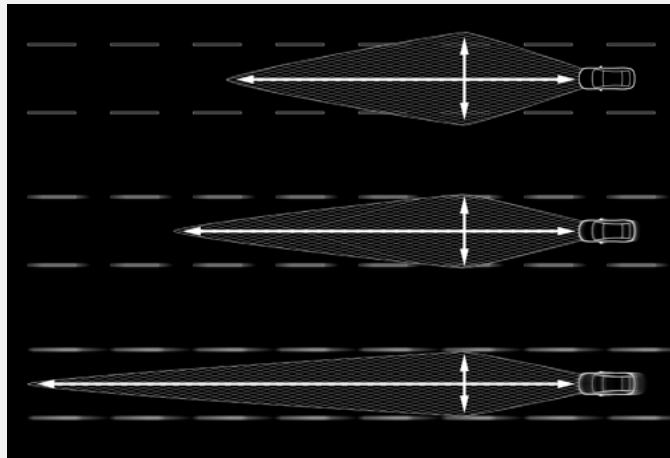


## ADVANCED TECHNOLOGY

### ADAPTIVE FRONT LIGHTING SYSTEM

One of the most important factors in mitigating driver fatigue and increasing safety during night driving is providing a well-illuminated field of view. The Adaptive Front lighting System optimises distribution of light from the headlights according to driving circumstances. Depending on vehicle speed and steering input, the system points the low-beam headlights in the direction the driver intends to travel.

(Standard on 132ps Exclusive-Line models only)



### ADAPTIVE LED HEADLIGHTS

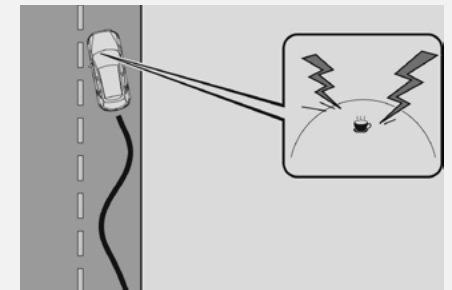
Mazda's Adaptive LED Headlights provide the ultimate in headlight technology, lighting up the road ahead as if it were daytime and allowing anybody to enjoy safe and stress-free driving at any time of day. The system increases visibility at night to help drivers stay vigilant by combining three technologies: Wide-range Low Beams which light up a wider area at low speeds, Highway mode which helps you see further when travelling at speed, and Glare-free High Beams which automatically dim part of the illuminated area to avoid dazzling other drivers.

(Standard on 184ps Exclusive-Line & Homura models)

### DRIVER ATTENTION ALERT

Designed to reduce accidents caused by inattentiveness due to driver fatigue. The system comes into play at speeds above 40mph and begins to "learn" the driver's habits, watching inputs and the vehicle's movements in the early stages before fatigue is a factor. Later, if the system detects changes in vehicle behaviour that suggest the driver may be losing concentration, it will suggest a rest stop by sounding a chime and displaying a warning in the Multi-Information Display.

(Standard across the range)



## ADVANCED TECHNOLOGY



### KINEMATIC POSTURE CONTROL

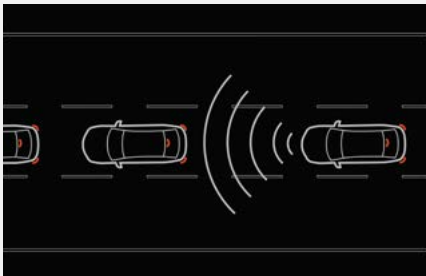
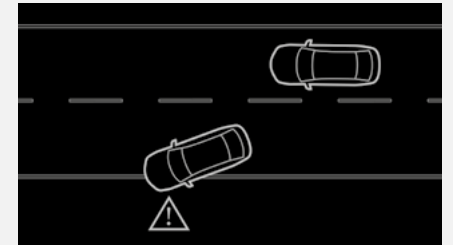
All Mazda MX-5 models feature Kinematic Posture Control (KPC). Mazda's KPC system is designed to increase stability during cornering without impacting the purity of the Mazda MX-5's handling and driver engagement. The KPC system applies a very small amount of brake force to the inner/unloaded rear wheel during cornering. The resulting brake force pulls the body down, suppressing body roll to provide more reassuring cornering.

(Standard across the range)

### LANE DEPARTURE WARNING SYSTEM WITH LANE KEEP ASSIST SYSTEM

Designed to prevent your vehicle from inadvertently straying from its lane. A front view camera monitors the road ahead and calculates the car's position relative to the lane markings. If the system detects the vehicle is moving out of its lane unintentionally, the steering wheel will vibrate and an audible alert will sound. The system will also take corrective action to help you stay within the lanes through assisted steering.

(Standard across the range)



### SMART BRAKE SUPPORT – FRONT

Alerts the driver of a possible collision using the warning indications in the display and a warning sound if the front radar sensor and Forward Sensing Camera determine that there is the possibility of a collision with a vehicle ahead, pedestrian, or a bicycle. Furthermore, if a collision is unavoidable, the automatic brake control is performed to reduce damage in the event of a collision.

(Standard across the range)

### SMART BRAKE SUPPORT – REAR

Reduces damage in the event of a collision by operating the brake control when the system's sensors detect an obstruction at the rear.

(Standard on Exclusive-Line models and up)



# MAZDA SERVICES

## MAZDA SERVICE PLANS

MODEL	ENGINE	PRICE~	MONTHLY PAYMENT~
Mazda MX-5	SKYACTIV-G	£759	£23.00

~Service plan pricing and monthly payment pricing is for new vehicles up to one month of age since first registration. Both are inclusive of VAT.

Take the hassle out of servicing your car by opting for a Mazda Service Plan from your Mazda dealer. For a one off payment or manageable monthly sum, your annual Mazda servicing can be covered for up to 3 years. Contact your Mazda dealer for more information on the options available. At participating dealers only.

The maximum service interval for your Mazda is 12,500 miles or 12 months whichever occurs first, however, the servicing intervals may reduce based on the style of driving and the conditions under which your vehicle is operated.



Mazda Service Plans cover parts, labour & fluids at the prevailing VAT rate for the first three scheduled services. You have the choice of paying for your Mazda Service Plan with a one-off payment, or by monthly Direct Debit payments over the duration of the Plan. Please contact your Mazda Authorised Dealer for more information. The servicing for Mazda Service Plans can only be carried out at a Mazda Authorised Dealer. At participating Dealers only and plan must be activated prior to the vehicle's first service.

## VEHICLE TAX RATES Tax year 2024-25

CO <sub>2</sub> EMISSIONS FIGURE (G/KM)	PETROL & RDE2 DIESEL - FIRST YEAR RATE	ALTERNATIVE FUEL CARS - FIRST YEAR RATE	STANDARD RATE (12 months)	
			PETROL/DIESEL CARS	ALTERNATIVE FUEL CARS
0	£0	£0	£190	£180
1-50	£10	£0	£190	£180
51-75	£30	£20	£190	£180
76-90	£135	£125	£190	£180
91-100	£175	£165	£190	£180
101-110	£195	£185	£190	£180
111-130	£220	£210	£190	£180
131-150	£270	£260	£190	£180
151-170	£680	£670	£190	£180
171-190	£1,095	£1,085	£190	£180
191-225	£1,650	£1,640	£190	£180
226-255	£2,340	£2,330	£190	£180
Over 255	£2,745	£2,735	£190	£180

First-year rate is paid when first registering a vehicle and is for the first 12 months Vehicle Excise Duty. After the first 12 months, the standard rate applicable at that time is payable. Vehicles with a list price >£40k will be subject to a premium of £410 over the Standard Rate for 5 years from the start of the second licence.

## MAZDA FINANCIAL SERVICES

Mazda Financial Services offers a variety of finance and insurance products to suit the needs of both private and business customers. With our wide range of plans and services, no-one is more committed to delivering complete motoring confidence and total peace of mind than Mazda and Mazda Financial Services<sup>†</sup>.

## MAZDA INSURANCE

When you buy your new Mazda from a Mazda franchised dealer, we'll give you free comprehensive Driveaway Insurance so you can get on the road there and then. Upgrade to our annual cover and benefit from our Mazda Accident Repair Promise all year round. In the event of an accident, unlike most other insurers, we guarantee to repair your Mazda at a Mazda Approved Bodyshop using only Mazda Genuine Parts. This helps to protect your Mazda's safety rating, resale value and manufacturer warranty. Plus, you'll also get windscreen damage cover, EU cover and a complimentary courtesy car. We'll even pay your cancellation fee if you're insured elsewhere\*. Eligibility criteria, terms and conditions apply.

Ask your dealer or call Mazda Insurance on 0330 102 7995.

Get a quote online at [www.mazdacarinsurance.co.uk](http://www.mazdacarinsurance.co.uk)

Mazda Insurance is arranged and administered by Verex Insurance Services Ltd which arranges policies from a panel of insurers.

\*Offer not available online. Offer conditions apply.

## MAZDA EXCESS RETURN VOUCHER

When you apply for Free Driveaway Insurance for your new Mazda, you'll also receive a free 1-year Excess Return voucher which pays back up to £250 of your insurance excess cost, regardless of who you're insured with, if you use our Call Mazda First service. If you have a Mazda Excess Return voucher and need to make an insurance claim, simply Call Mazda First before your insurer on 0800 015 0367.

## FREE MAZDA ACCIDENT AFTERCARE

In the event of an accident, Call Mazda First 0800 015 0367 before your insurer for free 24-hour Accident AfterCare and to redeem your £250 Excess Return voucher.

Our dedicated case handlers will liaise with your insurer and arrange Mazda Genuine Parts and repairs at a Mazda Approved Bodyshop, keeping your Mazda 100% Mazda and maintaining your Mazda warranties. We'll also provide accident recovery if your Mazda isn't driveable and a free courtesy car during the repair. Terms and conditions apply.

Save 0800 015 0367 to your mobile phone.

## TAX FREE – DIPLOMATIC AND MILITARY SALES

For further information contact your Mazda dealer or contact Mazda on 03457 48 48 48.

## MOTABILITY

For all Motability enquiries please contact your Mazda dealer or contact Mazda on 03457 48 48 48.

# CRAFTED IN JAPAN

Mazda Motors UK Limited reserves the right to introduce changes in specification and equipment due to its ongoing product development. Prices are subject to change without prior notice.

Bose, Apple CarPlay® and Android Auto™ are registered trademarks in the U.S. and other countries. Used with permission. The Bluetooth® word mark and logos are owned by the Bluetooth SIG, Inc. and any use of such marks by Mazda Motor Corporation is under license.

Other trademarks and trade names are those of their respective owners.

[www.mazda.co.uk](http://www.mazda.co.uk)

Mazda Helpline: 03457 48 48 48

Effective from 1 October 2024