

# MAZDA MX-30



PRICE AND SPECIFICATION GUIDE



## WELCOME...

The Mazda MX-30 is our stylish and driver focused Electric Vehicle that has been developed for customers who don't want to sacrifice driving pleasure when they buy an electric car. Staying true to the 'Jinbai Ittai - car and driver as one' ethos found across Mazda's combustion engine range, the Mazda MX-30 has been designed to deliver the intuitive responses, natural feedback and involving handling you'd expect of a Mazda.

The Mazda MX-30's looks will leave just as strong an impression, reflecting a unique expression of Mazda's famed Kodo design. The freestyle rear doors open backwards to reveal the stylish, modern and driver focused interior with unique styling touches including an interior that uses fine craftsmanship and environmentally friendly materials to create a sense of mindfulness and peace.

### Battery

Mazda MX-30 e-Skyactiv EV is offered with a right-sized 35.5kWh battery that offers excellent driving dynamics whilst reducing the impact on the environment. Charging at home and on-the-go is easy and fast meaning you are always ready to enjoy the drive. The same approach is applied to the Mazda MX-30 e-Skyactiv R-EV, which houses a 17.8kWh battery. Both powertrains use the most common charging connector types for slow and fast AC charging, and rapid DC charging. Using a 50kW rapid charger, you can top up from 20-80% in just 25 minutes in the BEV and the class-leading R-EV.<sup>††</sup>

### Safety

The all-electric Mazda MX-30 has been awarded the maximum five-star rating by Euro NCAP in its latest series of tests with 91% and 87% scores in its respective adult and child occupancy categories. The 91% rating is the best adult occupant protection result yet registered amongst all vehicles tested in the latest 2020 Euro NCAP tests.



<sup>††</sup> 26 minute charging time is based on an ambient temperature of 20°C. Charging times will vary depending on a variety of factors including the output of the charger being used, ambient temperature and battery state.



This Price & Specification Guide has been designed to enable you to discover more about the Mazda MX-30. Inside you'll find information on its key features, what they do, as well as technical information.

So what are you waiting for...



## THE LATEST IN TECHNOLOGY & CONVENIENCE

### MAZDA CONNECT

#### The latest in-car infotainment

Mazda Connect allows for seamless connectivity between you and your Mazda. Information is displayed on a beautiful & clear central 8.8" screen which is perfectly positioned at eye level.

Access vehicle information and settings, entertainment options including DAB Radio, connect your smartphone via Bluetooth to make and receive calls, access your phonebook, and access the European wide Navigation system which comes with 5-years free map updates.



### CONNECTED SERVICES

#### Convenience at your fingertips

Feel at one with your Mazda MX-30. Connected Services takes connectivity with your MX-30 to another level. Through the MyMazda App you can check remaining range, set the climate control before your journey, send a destination to your Navigation among many other features. Another way of expressing "Jinba Ittai" with your Mazda.



## APPLE CARPLAY® & ANDROID AUTO™ Smarter, safer way to use your smartphone

With Apple CarPlay®, get easy access to Apple Music, Maps, Messages and make phone calls with Siri through the car's Multimedia Commander and touch-screen.

Android Auto™ also allows you to access your favourite music and messaging apps, Google Maps and Google Play Music. Google Assistant voice control helps you send and receive messages, make calls, get directions and plan your day while you keep your eyes safely on the road.

## BOSE PREMIUM SOUND SYSTEM Made to move you

Like our cars, the Bose 12 speaker Premium sound system is made to move you.

Featured on our Makoto grade, the high performance speakers make you feel like you're at the front row of your favourite concert, making you feel immersed in whatever you're listening to.

The premium sound system includes all of the latest Bose technologies such as CenterPoint, BassMatch and AudioPilot which all contribute to an immersive entertainment experience.



## FOR THE EVERYDAY

Designed to slot into your life.

Be amazed by the spacious interior enhanced by the unique freestyle doors, allowing for a wide open space to enter and exit the MX-30.

Flexibility is further enhanced by new storage features such as the floating centre console and 60:40 folding rear seats. Allowing you to use the MX-30 as you would any other Mazda for your daily needs.



# MAZDA MX-30 PRICING

## e-SKYACTIV EV

	PRICE	VAT	P11D VALUE	FIRST YEAR VED & DVLA FIRST REG FEE*	ESTIMATED 'ON THE ROAD' RETAIL	CO <sub>2</sub> EMISSIONS (g / km) <sup>~</sup>	EQUIVALENT ALL-ELECTRIC RANGE (miles) <sup>~</sup>	BIK TAX (%) <sup>^</sup>	2023 / 24 MONTHLY TAX LIABILITY 20% / 40%	INSURANCE GROUP
Mazda MX-30 145ps Prime-Line Auto	£25,995.83	£5,199.17	£31,195	£55	£31,250	0	124	2%	£10/£21	19E
Mazda MX-30 145ps Exclusive-Line Auto	£27,579.17	£5,515.83	£33,095	£55	£33,150	0	124	2%	£11/£22	19E
Mazda MX-30 145ps Makoto Auto	£29,579.17	£5,915.83	£35,495	£55	£35,550	0	124	2%	£12/£24	19E

## e-SKYACTIV R-EV

Mazda MX-30 R-EV 170ps Prime-Line Auto	£25,995.83	£5,199.17	£31,195	£55	£31,250	21 <sup>^^</sup>	53	8%	£42/£83	TBC
Mazda MX-30 R-EV 170ps Exclusive-Line Auto	£27,579.17	£5,515.83	£33,095	£55	£33,150	21 <sup>^^</sup>	53	8%	£44/£88	TBC
Mazda MX-30 R-EV 170ps Makoto Auto	£29,954.17	£5,990.83	£35,945	£55	£36,000	21 <sup>^^</sup>	53	8%	£48/£96	TBC

## e-SKYACTIV R-EV Limited Edition

Mazda MX-30 R-EV 170ps Edition R Auto <sup>†</sup>	£31,579.17	£6,315.83	£37,895	£55	£37,950	21 <sup>^^</sup>	53	8%	£51/£101	TBC
--	------------	-----------	---------	-----	---------	------------------	----	----	----------	-----

<sup>†</sup> Includes free of charge Jet Black paint with Maroon Rouge side panels.

<sup>^^</sup> CO<sub>2</sub> Emissions weighted combined. These figures were obtained using a combination of battery power and fuel. The Mazda MX-30 is a plug-in hybrid vehicle requiring mains electricity for charging.

<sup>~</sup>Figures shown are for comparability purposes; only compare fuel consumption and CO<sub>2</sub> figures with other cars tested to the same technical procedures. These figures may not reflect real life driving results, which will depend upon a number of factors including the accessories fitted (post-registration), variations in weather, driving styles and vehicle load. All figures quoted are derived from the latest WLTP test cycle.

\*First year rate Vehicle Excise Duty as of 1 April 2023, includes £55 DVLA first registration fee. <sup>^</sup>BIK effective from 6 April 2023.  
Pricing and specification are subject to change. Please speak with your local dealer for latest pricing information.

## MAZDA MX-30 GRADE HIGHLIGHTS

### PRIME-LINE from £31,250

#### STANDARD FEATURES:

##### CHARGING

- DC socket for rapid charging up to 50kW
- Regenerative braking (5 modes, selected via paddle shift switches)
- Type 2 Mode 2 cable for AC charging via UK 3-pin plug
- Type 2 Mode 3 cable for AC charging via home or public charge points

##### EXTERIOR

- 18" Silver Metallic alloy wheels (EV Only)
- 18" Grey Metallic alloy wheels (R-EV only)
- B-Pillar & C-Pillar garnish in Satin black
- Black, electrically adjustable, heated, auto power folding door mirrors with integrated indicator lights
- Black front grille
- Front rain-sensing wipers
- Coming home/leaving home lights
- Dusk-sensing headlights
- LED daytime running lights
- High Beam Control
- LED headlights with auto-levelling
- Front and rear parking sensors
- Gloss black roof spoiler

##### INTERIOR

- Light Grey Cloth with Dark Grey trim
- 7" colour touch-screen for climate control settings
- Colour 7" TFT instrument cluster display (provides speed, traffic signs and Mazda Radar Cruise Control information)
- Electronic Parking Brake with auto-hold and auto-disengage function

##### INFOTAINMENT

- FM / DAB radio, with 8 speakers and USB input
- Apple CarPlay® & Android Auto™
- Connected Services\*
- Integrated Bluetooth®
- Mazda Connect multimedia system with 8.8" Colour centre display and Multimedia Commander
- Mazda Navigation System with European mapping and 5-years free map updates

##### COMFORT AND CONVENIENCE

- Climate control air-conditioning
- Front electric windows
- Mazda Radar Cruise Control (features Stop and Go)
- Windscreen projected colour Active Driving Display

##### SAFETY AND SECURITY

- Blind Spot Monitoring
- Driver Attention Alert
- e-Call with GPS
- Emergency Lane-Keeping
  - with Blind Spot Assist
  - with Road Keep Assist
- Intelligent Speed Assist
- Lane-keep Assist System with Lane Departure Warning System
- Remote central locking with deadlocking and automatic door lock when driving
- Smart Brake Support - Front
- Traffic Sign Recognition



Model shown: Mazda MX-30 Prime-Line Auto  
in Jet Black.

\*Connected Services is a subscription service and requires a compatible mobile device to download and sign-up to the MyMazda App. A 3-year complimentary period is included and commences from the date of first registration of the vehicle. Please contact your dealer or visit [www.mazda.co.uk/my-mazda](http://www.mazda.co.uk/my-mazda) for further information. Pricing and specification are subject to change. Please speak with your local dealer for latest pricing information.

## EXCLUSIVE-LINE from £33,150

IN ADDITION TO PRIME-LINE, EXCLUSIVE-LINE ADDS:

### EXTERIOR

- 18" Bright Metallic alloy wheels (EV only)
- 18" Black diamond cut alloy wheels (R-EV only)
- Auto-dimming driver door mirror
- B-Pillar & C-Pillar garnish in Piano black
- Rear privacy glass

### INTERIOR

- Light Grey cloth seats with Stone Leatherette
- Driver seat power slide, recline, height and lumbar adjustment with head-up display and driver door mirror memory
- Frameless auto-dimming rear-view mirror
- Heated front seats

### SAFETY AND SECURITY

- Smart keyless entry



Model shown: Mazda MX-30 Exclusive-Line Auto in Machine Grey.

## MAKOTO from £35,550

IN ADDITION TO EXCLUSIVE-LINE, MAKOTO ADDS:

### EXTERIOR

- 360° View Monitor (provides a birdseye view with front, rear and side mounted cameras)
- Front wiper de-icer
- Adaptive LED Headlights
- Signature front LED daytime running lights
- Power tilt and slide sunroof

### INTERIOR

- 1500W standard UK 3-pin plug socket: Can be used to power external devices such as your fridge (R-EV only)
- Heated steering wheel

### INFOTAINMENT

- FM / DAB radio featuring 12-Speaker Bose surround sound system, with Bose CenterPoint, BassMatch and AudioPilot technology

### COMFORT AND CONVENIENCE

- Cruising and Traffic Support

### SAFETY AND SECURITY

- Driver Monitoring
- Front Cross Traffic Alert
- Smart Brake Support - Rear
- Smart Brake Support - Rear Crossing



Model shown: Mazda MX-30 Makoto Auto in Soul Red Crystal with Black side panels and roof.

## EDITION R from £37,950

IN ADDITION TO MAKOTO, EDITION R ADDS:

### EXTERIOR

- 18" Black diamond cut alloy wheels
- Free-of-Charge Jet Black paint with Maroon Rouge side panels
- Edition R engraved Key fob

### INTERIOR

- Dark Grey Cloth with Black Leatherette with embossed headrests
- Luxury Edition R floor mats



Model shown: Mazda MX-30 Edition R Auto in Jet Black with Maroon Rouge side panels.

MAZDA MX-30 INTERIOR TRIMS AND COLOURATION



LIGHT GREY CLOTH  
WITH DARK GREY TRIM  
(Standard on Prime-Line)



LIGHT GREY CLOTH  
WITH STONE LEATHERETTE  
(Standard on Exclusive-Line and Makoto)



DARK GREY CLOTH  
WITH BROWN LEATHERETTE  
(Optional on Makoto)



DARK GREY CLOTH  
WITH BLACK LEATHERETTE  
(Optional on Makoto, standard on Edition R)

Factory-fitted options

	BASIC PRICE	VAT	RRP
Dark Grey cloth with Brown Leatherette*	£166.67	£33.33	£200
Dark Grey cloth with Black Leatherette**	£166.67	£33.33	£200

\*Optional on Makoto only. \*\*Optional on Makoto, Standard on Edition R

MAZDA MX-30 PAINT FINISH OPTIONS



ARCTIC WHITE



POLYMETAL GREY



ZIRCON SAND WITH BLACK SIDE PANELS AND ROOF^



JET BLACK PAINT WITH SILVER SIDE PANELS^



CERAMIC



JET BLACK



CERAMIC PAINT WITH DARK GREY SIDE PANELS AND BLACK ROOF^



SOUL RED CRYSTAL PAINT WITH BLACK SIDE PANELS AND ROOF^



MACHINE GREY



JET BLACK WITH MAROON ROUGE SIDE PANELS^^

Factory paint options - Prime-Line, Exclusive-Line and Makoto

	BASIC PRICE	VAT	RRP
Arctic White	£0	£0	£0
Polymetal Grey, Ceramic and Jet Black	£458.33	£91.67	£550
Machine Grey	£558.33	£111.67	£670
Ceramic with Dark Grey Side Panels and Black Roof^	£1,250.00	£250.00	£1,500
Jet Black with Silver Side Panels^	£1,250.00	£250.00	£1,500
Zircon Sand with Black Side Panels and Roof^	£1,250.00	£250.00	£1,500
Soul Red Crystal with Black Side Panels and Roof^	£1,500.00	£300.00	£1,800

^ Not available on Mazda MX-30 145ps Prime-Line Auto. ^^ Free-of-Charge on Edition R models only.  
Mazda Motors UK reserves the right to introduce changes in pricing, specification and equipment due to its ongoing product development. Colour and trim samples shown in this digital brochure may vary from the actual colours because of the variations of resolutions and colours found in various screen displays, and if printed, limitations within the printing process. Models shown may not be to UK specification. It is recommended that you consult your Mazda dealer when referring to these.

## MAZDA MX-30 ALLOY WHEELS



18" SILVER ALLOY WHEELS  
Standard on 145ps EV Prime-Line



18" GREY ALLOY WHEELS  
Standard on 170ps R-EV Prime-Line



18" BRIGHT ALLOY WHEELS  
Standard on 145ps EV Exclusive-Line & Makoto



18" BLACK DIAMOND CUT ALLOY WHEELS  
Standard on 170ps R-EV Exclusive-Line,  
Makoto & Edition R models

### ACCESSORY ALLOY WHEELS

We have a range of accessories available including a range of accessory alloy wheels, so that you can make your Mazda MX-30 more individual to you.

For more information on the entire range of accessories we retail, please [CLICK HERE](#), select your vehicle and visit the 'Options & Accessories' section.



Options & Accessories: A small selection of our range of accessories are shown within this Price and Specification guide. For more information on the entire range of accessories we retail, please visit [www.mazda.co.uk/configurator](http://www.mazda.co.uk/configurator), select your vehicle and visit the 'Options & Accessories' section. The price shown is a non-binding recommendation of Mazda Motors UK, is subject to change and may not include extras. Alloy wheel prices do not include tyres. Accessory fitment costs may differ between Mazda dealers. For further information about Mazda Genuine Accessories and latest pricing including any fitment cost differences please contact your local Mazda dealer.

# MAZDA MX-30 SPECIFICATIONS

## Exterior

		Prime-Line	Exclusive-Line	Makoto	Edition R
Special version Edition R engraved key fob		-	-	-	•
B-Pillar and C-Pillar garnish:	Material Black	•	-	-	-
	Piano Black	-	•	•	•
Door mirrors:	Black electrically-adjustable, heated, auto power folding door mirrors	•	•	•	•
	With auto-dimming (Drivers mirror only)	-	•	•	•
	With adjustable memory and tilt-down function when in reverse	-	•	•	•
Front Grille:	Black finish	•	•	•	•
Headlights:	Adaptive LED Headlights (ALH) - the ultimate in headlight technology. Combining three technologies: Glare-free High Beams which automatically dim part of the illuminated area to avoid dazzling other drivers, Wide-range Low Beams which light up a wider area at low speeds and Highway mode which helps you see further when travelling at speed	-	-	•	•
	Coming home / leaving home lights	•	•	•	•
	Dusk-sensing headlights	•	•	•	•
	High Beam Control (HBC) - detects oncoming and preceding vehicles and automatically switches between high and low beams during night driving, making it easier for the driver to recognise hazards	•	•	-	-
	LED headlights with auto-levelling	•	•	•	•
	LED daytime running lights	•	•	-	-
	Signature LED daytime running lights	-	-	•	•
Parking sensors (audible and visual warning):	Front and rear	•	•	•	•
Parking aids:	Reversing camera	•	•	•	-
	360° View Monitor (front, rear and side cameras)	-	-	•	•
Privacy glass:	Rear side and rear windows	-	•	•	•
Rear lights:	LED rear combination lights	•	•	-	-
	Signature LED rear combination lights	-	-	•	•
Rear roof spoiler:	Gloss Black	•	•	•	•
Sunroof:	Power tilt and slide	-	-	•	•
Wheels & tyres:	18" Silver Metallic alloy wheels (EV only) with 215/55 R18 tyres	•	-	-	-
	18" Grey Alloy Wheels (R-EV Only) with 215/55 R18 tyres	•	-	-	-
	18" Bright Metallic alloy wheels (EV only) with 215/55 R18 tyres	-	•	•	-
	18" Black Diamond Cut alloy wheels (R-EV Only) with 215/55 R18 tyres	-	•	•	•
Wipers:	Front, rain-sensing with adjustable sensitivity and speed	•	•	•	•
	Front Wiper De-icer - Hot wires located along the drivers side A-pillar and the wiper finishing positions	-	-	•	•
	Rear	•	•	•	•

• = Standard equipment; - = Not available; O = Option available at additional cost.

## Interior Features

		Prime-Line	Exclusive-Line	Makoto	Edition R
12v Electrical power outlet:		•	•	•	•
150W standard UK 3-pin plug socket: Can be used to power electrical devices		-	-	•	•
1500W standard UK 3-pin plug socket: Can be used to power electrical devices (R-EV Only)		-	-	•	•
Chrome interior trim accents:	Steering wheel centre bezel, surround of start / stop button and glove box handle	-	•	•	•
Door panel trim:	Cloth with soft touch armrest	•	-	-	-
	Cloth with vinyl leather armrest and cork inserts around inner door handle	-	•	•	•
Electronic Parking Brake with auto-hold and auto-disengage function		•	•	•	•
Gear shift:	Leather-wrapped	•	•	•	•
Grab handles:	Driver, front passenger and two rear, with coat hooks	•	•	•	•
Interior cork accents:	Mazda "Heritage Cork" on the console tray and cupholder lids	•	•	•	•
Instrument cluster:	Trip computer	•	•	•	•
	Colour 7-inch TFT display (provides speed, traffic signs and Mazda Radar Cruise Control information)	•	•	•	•
Interior mirror:	Frameless auto-dimming rear-view mirror	-	•	•	•
Interior trim:	Light Grey cloth with Dark Grey trim	•	-	-	-
	Light Grey cloth with Stone Leatherette	-	•	•	-
	Dark Grey cloth with Brown Leatherette	-	-	O	-
	Dark Grey cloth with Black Leatherette	-	-	O	•
Seats (Front):	Driver's seat, manual slide, recline, height and seat tilt	•	-	-	-
	Front passenger's seat manual slide, recline and height adjustment	•	•	•	•
	Driver seat power slide, recline, height, tilt and lumbar adjustment with head-up display and driver door mirror memory	-	•	•	•
	Heated with 3-stage setting	-	•	•	•
	Front seat headrests embossed with Edition R motif	-	-	-	•
Seats (Rear):	Three height-adjustable head restraints	•	•	•	•
	60:40 split fold down rear seats	•	•	•	•
	Folding centre armrest equipped with two cup holders	•	•	•	•
Steering wheel:	Leather-wrapped	•	•	•	•
	Telescopic and tilt adjustment	•	•	•	•
	Heated	-	-	•	•
	Paddle shift regenerative braking control (5 modes)"	•	•	•	•
Storage spaces:	Door pockets (driver, front passenger and two rear)"	•	•	•	•
	Front centre storage with two cupholders	•	•	•	•
	Glovebox with interior illumination	•	•	•	•
	Roof mounted sunglasses holder	•	•	•	•
	Seatback pocket (located on rear of front passenger seat)	•	•	•	•

• = Standard equipment; - = Not available; O = Option available at additional cost.

## Infotainment

		Prime-Line	Exclusive-Line	Makoto	Edition R
Apple CarPlay® & Android Auto™:	In-car assistant systems that let you access certain features of your phone through Mazda Connect	•	•	•	•
Integrated Bluetooth®:	Allows audio transfer from Bluetooth® devices, hands-free calling and easy access to phone contacts via steering wheel controls or Multimedia Commander	•	•	•	•
Mazda Connect (Multimedia System):	FM / DAB radio, with 8 speakers	•	•	-	-
	FM / DAB radio featuring 12-Speaker Bose surround sound system, with Bose CenterPoint, BassMatch and AudioPilot technology	-	-	•	•
	8.8" TFT Colour centre display	•	•	•	•
	Steering wheel-mounted audio and Bluetooth® controls	•	•	•	•
	USB input	•	•	•	•
Mazda Connected Services <sup>1)</sup> :	Accessed via the MyMazda App which provides you with information about your vehicle, you can also access many other features like remote controls, vehicle finder and send a destination to your car	•	•	•	•
Mazda Navigation System:	European mapping with alternative route calculations, point of interest search and 5-years free map updates	•	•	•	•
Multimedia Commander:	Located between the driver and front passenger, the Multimedia Commander allows easy control of the advanced connectivity and infotainment system, with information displayed on the 8.8" colour centre screen, includes a separate volume control dial	•	•	•	•

• = Standard equipment; - = Not available.

<sup>1)</sup> Connected Services is a subscription service and requires a compatible mobile device to download and sign-up to the MyMazda App. A 3-year complimentary period is included and commences from the date of first registration of the vehicle. Please contact your dealer or visit [www.mazda.co.uk/my-mazda](http://www.mazda.co.uk/my-mazda) for further information.

## Comfort and Convenience

		Prime-Line	Exclusive-Line	Makoto	Edition R
Adaptive Cruise Control - Mazda Radar Cruise Control (MRCC) (features Stop & Go function)		•	•	•	•
Air-conditioning:	Climate control air-conditioning operated by the central 7-inch colour touch-screen control panel	•	•	•	•
Cruising and Traffic Support (CTS):	Where conditions allow, assists driver with accelerator, brake and steering functions when following a vehicle ahead in heavy traffic, helping to reduce driver fatigue	-	-	•	•
Electric windows:	Front with one-touch auto down / up	•	•	•	•
e G-Vectoring Control Plus (eGVC Plus):	Provides better handling and a smoother ride. Aids in emergency avoidance manoeuvres and offers more control in various situations	•	•	•	•
Head-up Display:	Windscreen Projected colour Active Driving Display (Head-up Display) Projects full-colour information directly onto the windscreen within the driver's line of sight, including navigation, speed and vehicle status	•	•	•	•
Interior Lighting:	Front & rear with LED lighting	•	•	•	•
Luggage compartment:	LED illumination	•	•	•	•
Power Start / Stop button		•	•	•	•
Sun visors:	Driver's and front passenger's with covered vanity mirror and driver's ticket holder	•	•	•	•

• = Standard equipment; - = Not available.

Safety and Security

		Prime-Line	Exclusive-Line	Makoto	Edition R
Airbags:	Front dual stage driver and single stage front passenger	•	•	•	•
	Front side airbags	•	•	•	•
	Front and rear curtain airbags	•	•	•	•
	Drivers front knee airbag	•	•	•	•
	Front passenger airbag cut-off switch	•	•	•	•
Anti-lock Braking System (ABS)		•	•	•	•
Blind Spot Monitoring (BSM)	Uses a system of sensors to alert the driver when a vehicle enters a blind spot	•	•	•	•
Driver Attention Alert (DAA):	The system monitors driver inputs and the vehicle's movements to sense the early stages of driver fatigue	•	•	•	•
Driver Monitoring (DM):	A camera within the centre display screen monitors the driver's facial movements to detect driver fatigue, encouraging the driver to take a rest where needed	-	-	•	•
Dynamic Stability Control (DSC)		•	•	•	•
e-Call with GPS:	In the case of an accident, either provides a manual or automated message to the emergency services, which includes the vehicle's location. (European locations only)	•	•	•	•
Emergency Lane- Keeping with Blind Spot Assist:	Assists steering operation when changing lanes despite the risk of a potential collision. It detects vehicles approaching from the rear or side of the vehicle when the MX-30 is traveling at approximately 37mph or above. Alongside Blind Spot Monitoring alerts, it helps the driver avoid potential collisions and mitigates damage in the event of a collision	•	•	•	•
Emergency Lane- Keeping with Road Keep Assist:	Enhanced camera function to enable the detection of grass and curbs along the roadside to help prevent departure from the road even on roads without lanes. Activates when the MX-30 is traveling at approximately 37mph or above, assisting steering operation when there is a risk that the vehicle may depart from the road	•	•	•	•
Emergency Stop Signalling system (ESS)		•	•	•	•
Emergency tyre repair kit		•	•	•	•
Front Cross Traffic Alert (FCTA):	When pulling out of junctions, FCTA checks for approaching vehicles in your blind spots either side of the front of your vehicle. When an oncoming vehicle is detected, it sounds a warning	-	-	•	•
Hill Launch Assist (HLA):	When starting off on an incline, HLA helps prevent the car from rolling backwards when the driver moves thier foot from the brake to the accelerator pedal by maintaining an automatic brake	•	•	•	•
Intelligent Speed Assist (ISA):	A driver operated speed-limiting system that works in conjunction with Traffic Sign Recognition (TSR) to help keep drivers from exceeding the speed limit unintentionally	•	•	•	•
ISOFIX child seat anchorage; attached to outer rear seats		•	•	•	•
Lane-keep Assist System (LAS) with Lane Departure Warning System (LDWS):	The system detects the line markings on the road surface and instantly warns you in case of unintentional lane departure, whilst also assisting to steer the vehicle to keep it within its lane	•	•	•	•
Pre-crash safety: Smart Brake Support (SBS):	Front (SBS) with Turn-Across Traffic - designed to reduce the risk of accidents by helping the driver avoid frontal collisions	•	•	•	•
	Rear (SBS-R) - designed to reduce the risk of accidents by helping the driver avoid rear-end collisions	-	-	•	•
	Rear Crossing (SBS-RC) - detects vehicles approaching from the rear left and right sides of the vehicle, and the rear of the vehicle while the vehicle is being reversed out of a parking space	-	-	•	•
Remote central locking with deadlocking and automatic door lock when driving		•	•	•	•
Smart keyless entry:	Allows opening and locking of the vehicle without removing the key from your pocket or bag	-	•	•	•
Seatbelt reminder audible warning:	Driver, passenger and rear seats	•	•	•	•
Thatcham accredited alarm and immobiliser		•	•	•	•
Traction Control System (TCS)		•	•	•	•
Traffic Sign Recognition (TSR)		•	•	•	•
Tyre Pressure Monitoring System (TPMS)		•	•	•	•

• = Standard equipment; - = Not available.

Electrification

		Prime-Line	Exclusive-Line	Makoto	Edition R
Type 2 Mode 2 cable for AC charging via UK 3-pin plug		•	•	•	•
Type 2 Mode 3 cable for AC charging via home or public charge points		•	•	•	•
DC socket for rapid charging up to 50kW		•	•	•	•
Regenerative braking (5 modes, selected via paddle shift switches)		•	•	•	•

• = Standard equipment.

MAZDA MX-30 TECHNICAL INFORMATION

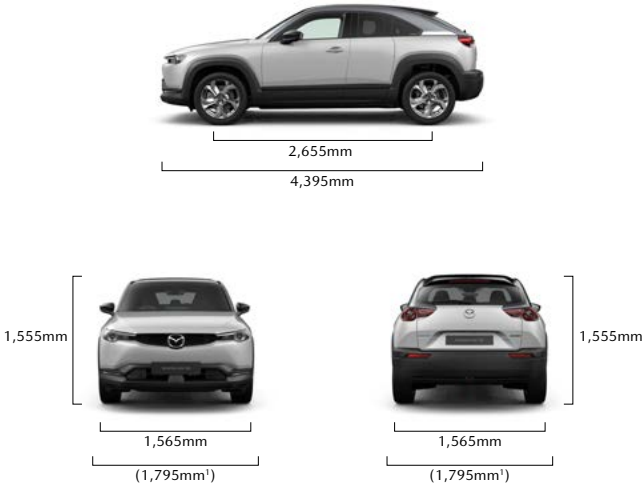
Model availability	e-SKYACTIV EV	e-SKYACTIV R-EV
	1-speed automatic	1-speed automatic
Prime-Line	•	•
Exclusive-Line	•	•
Makoto	•	•
Edition R	-	•

Dimensions		
Overall length / width <sup>1)</sup> / height (mm)		4,395 / 1,795 (2,035) <sup>1)</sup> / 1,555
Wheelbase (mm)		2,655
Ground clearance between the axles – unladen (mm)		136
Front track / Rear track (mm)		1,565 / 1,565
Front headroom <sup>2)</sup> / leg room / shoulder room (mm)		982 (977) <sup>2)</sup> / 1,058 / 1,412
Rear headroom / leg room / shoulder room (mm)		939 / 861 / 1,338
Cargo volume, acc. to VDA (l) <sup>3)</sup> :	5-seat mode to belt line including underfloor storage (without Bose / with Bose)	350/332
	2-seat mode including underfloor storage (without Bose / with Bose)	1,155/1,137
Brake Type - Front / Rear		Ventilated / Solid
Brake Dimensions (mm) - Front / Rear		326 / 303
Steering		
Steering gear		Electric Power Assist Steering (Rack and Pinion)
Wall-to-wall turning circle (M)		11.4

<sup>1)</sup> Vehicle width excludes mirrors. Figures in brackets includes mirrors.

<sup>2)</sup> Figures in brackets are for vehicles fitted with power tilt and slide sunroof.

<sup>3)</sup> Includes underfloor storage.



5-door SUV		e-SKYACTIV EV	e-SKYACTIV R-EV
		1-speed automatic	1-speed automatic
ELECTRIC MOTOR			
Battery Size		35.5 kWh	17.8 kWh
Battery Type		Lithium-ion	Lithium-ion
Battery Weight		310 kg	188.2 kg
Output:	Maximum 30 minutes power	80.9 kW	60 kW
	Maximum hourly output	79.2 kW	55 kW
ENGINE			
Displacement (cc)		-	830cc~
Number of Rotors		-	1
Compression ratio		-	11.9
Recommended fuel		-	Unleaded 95 RON
Fuel tank capacity (litres)		-	50
CHARGING			
50 kW 20-80% charge		25 minutes <sup>^</sup>	25 minutes <sup>^</sup>
Domestic Socket 2.4kW (20-80%)		9 hours, 30 minutes	4 hours, 50 minutes
Mode 3 AC Charging (20-80%)		3 hours	1 hour, 30 minutes
PERFORMANCE			
Maximum power output:	ps (KW)	145 (107)	170 (125)
Max. torque (Nm)		271	260
Acceleration (0-62 mph in seconds)		9.7	9.1
Top Speed (mph)		87	87
FUEL CONSUMPTION			
WLTP fuel consumption mpg (l/100km) <sup>1)</sup>	Low	-	47.9 (5.9)
	Medium	-	39.2 (7.2)
	High	-	44.1 (6.4)
	Extra High	-	29.7 (9.5)
	Combined	-	37.2 (7.6)
	Weighted combined*	-	282.5 (1.0)
ELECTRIC RANGE AND CO <sub>2</sub> EMISSIONS			
WLTP Electric Range (miles) <sup>1)</sup>	Combined	124	53
	City	165	68
WLTP electric energy consumption (kWh/100km) <sup>1)</sup>	Combined	3.5	-
	Weighted combined*	-	3.6
WLTP CO <sub>2</sub> emissions (g/km) <sup>1)</sup>	Weighted combined*	0	21
WEIGHTS			
Maximum Kerb weight (kg) incl. driver (75kg)		1,750	1,881
Permitted gross vehicle weight (kg)	Total	2,119	2,251
	Front/rear	1,052 / 1,067	1,228 / 1,023
Maximum roof load (kg)		75	75

<sup>1)</sup> Vehicles are homologated in accordance with the type approval procedure WLTP (Regulation (EU) 1151 / 2017; Regulation (EU) 2007/715).

<sup>†</sup> Range figures are for comparison purposes and may not always reflect real life driving results which depend on a number of factors. These include the starting charge of the battery, accessories fitted (post registration), variations in weather, driving styles, vehicle load and use of features such as air conditioning or heated seats.

<sup>^</sup>25 minute charging time is based on an ambient temperature of 20°C. Charging times will vary depending on a variety of factors including the output of the charger being used, ambient temperature and battery state.

~The engine capacity of 1660cc as indicated in the registration certificate is calculated for rotary piston (Wankel) engines in accordance with Directive 2017/1151/EC based on the double engine volume (2x830 ccm).

## MAZDA MX-30 ACCESSORIES AND EQUIPMENT OVERVIEW

We know how complicated buying a new car can be when it comes to deciphering the latest technology. That's why we have taken the time to provide you with some clarity on what's available on the Mazda MX-30, to help you make the right choice as to which grade will suit your lifestyle best.

Within this section we provide information on just some of our latest options & accessories, details on our electric technology, as well as information on our Skyactiv-Vehicle Dynamics and our Advanced Safety Technology.

We don't only make cars that are involving and easy to operate, we do this with our Price & Specification guide too to enable you to make the best decision.

Then all that is left to do is to experience the Mazda MX-30 for yourself. To find your local dealer and to arrange a Test Drive, [CLICK HERE](#)



## OPTIONS & ACCESSORIES



EXTERIOR GARNISH SET  
£932.89



CHARGING CABLE 4M  
£204.10  
With bag - £281.52



DOOR ENTRY PROTECTION FOIL  
£99.41



ROOF RACK  
£215.39

Options & Accessories: A small selection of our range of accessories are shown within this Price and Specification guide. For more information on the entire range of accessories we retail, please visit [www.mazda.co.uk/configurator](http://www.mazda.co.uk/configurator), select your vehicle and visit the 'Options & Accessories' section. The price shown is a non-binding recommendation of Mazda Motors UK, is subject to change and may not include extras. Alloy wheel prices do not include tyres. Accessory fitment costs may differ between Mazda dealers. For further information about Mazda Genuine Accessories and latest pricing including any fitment cost differences please contact your local Mazda dealer.

## OPTIONS & ACCESSORIES



FLOATING CENTRE CONSOLE ILLUMINATION  
£221.48



BOOT ORGANISER BOX  
£82.56



BOOT LINER  
£75.00



ILLUMINATED SCUFF PLATES  
£368.88



FLOOR MATS "LUXURY"  
£85.00



THULE ROOF BOX – SHORT TYPE  
£352.09

Options & Accessories: A small selection of our range of accessories are shown within this Price and Specification guide. For more information on the entire range of accessories we retail, please visit [www.mazda.co.uk/configurator](http://www.mazda.co.uk/configurator), select your vehicle and visit the 'Options & Accessories' section. The price shown is a non-binding recommendation of Mazda Motors UK, is subject to change and may not include extras. Alloy wheel prices do not include tyres. Accessory fitment costs may differ between Mazda dealers. For further information about Mazda Genuine Accessories and latest pricing including any fitment cost differences please contact your local Mazda dealer.

## MAZDA MX-30 EV ELECTRIC TECHNOLOGY

Mazda wants to enrich people's lives through car ownership and driving experience. We envision cars existing sustainably with the earth and society, and are committed to embracing, tackling and solving new automotive challenges through creative, forward-thinking. This is the core of our Mazda vision.

The Mazda MX-30, Mazda's first electric car is the newest edition to showcase this forward-thinking. This all-electric vehicle introduces a new electric drive technology to Mazda, called e-Skyactiv EV. This system is equipped with a 35.5kwh lithium-ion battery and has a driving range of approximately 124 miles\*, far exceeding the 26 mile\*\* average daily drive of UK drivers.

The Mazda MX-30 is an electric car that delivers a truly unique driving experience – that simply feels as natural as driving a car with an internal combustion engine.



### CHARGING OVERVIEW - What you need to know...

- The Mazda MX-30 e-Skyactiv EV and e-Skyactiv R-EV are both compatible with the most common charging connectors (CCS and Type 2) for both at-home and out-of-home charging, via AC or DC.
- There are a number of third party apps available to also help locate charging points, meaning you can plan where you want to charge when out and about
- Charging cables and power sockets are completely waterproof so can be used at any time to charge your Mazda MX-30.
- The sockets lock into the car, meaning it is secure and safe to leave unattended.

\*Range figures are for comparison purposes and may not always reflect real life driving results which depend on a number of factors. These include the starting charge of the battery, accessories fitted (post registration), variations in weather, driving styles, vehicle load and use of features such as air conditioning or heated seats.

\*\*Internal research, 2019 data.

## MAZDA MX-30 R-EV

### DISCOVER THE PLUG-IN HYBRID THAT ALWAYS DRIVES ELECTRIC

Mazda was the first in the world to successfully commercialize the rotary engine and it has been a special part of Mazda history that represents our “never-stop challenging spirit” ever since.

Despite discontinuing mass-production rotary engine vehicles in 2012, we have continued researching and developing the rotary engine, determined to keep its flame alive. Now, ten years later, the Mazda MX-30—the leading model for Mazda electrification technology—has given the rotary engine a new role and it is making a comeback as a generator.

Rotary engines are known for their compact size and, by using one as a generator, we were able to incorporate the best aspects of a series drive system, in which the drive is entirely motor-powered, into a unique plug-in hybrid that offers more ways of using your car as an electric vehicle—the Mazda MX-30 e-Skyactiv R-EV.



With the Mazda MX-30 e-Skyactiv R-EV, we are offering a new option for customers who want the flexibility of longer drives at the weekend or for those holiday road trips, without compromising on the benefits of Mazda's truly unique electric driving experience.

The MX-30 R-EV is equipped with a 17.8kWh lithium-ion battery capable of driving on pure EV mode for up to 53 miles\*, far exceeding the average daily commute of UK drivers. And for when a longer journey is required, the battery is paired with an 830cc~ Rotary engine, giving complete peace of mind with over 400 miles of total range\*. The perfect companion for the weekend roadtrip or vacation.

\*Range figures are for comparison purposes and may not always reflect real life driving results which depend on a number of factors. These include the starting charge of the battery, accessories fitted (post registration), variations in weather, driving styles, vehicle load and use of features such as air conditioning or heated seats.

~The engine capacity of 1660cc as indicated in the registration certificate is calculated for rotary piston (Wankel) engines in accordance with Directive 2017/1151/EC based on the double engine volume (2x830 ccm).

## SKYACTIV-VEHICLE DYNAMICS: TRANSMISSIONS, CHASSIS AND BODY

### TRANSMISSIONS

Mazda MX-30 features a single speed transmission as electric motors do not require individual gears.

To encourage further driver engagement Mazda has also developed its own bespoke motor pedal concept for the Mazda MX-30. The MX-30 is also equipped with steering wheel-mounted paddle shifters which operate the brake regeneration system and also further enhances the enjoyment of EV driving.



### SKYACTIV-CHASSIS

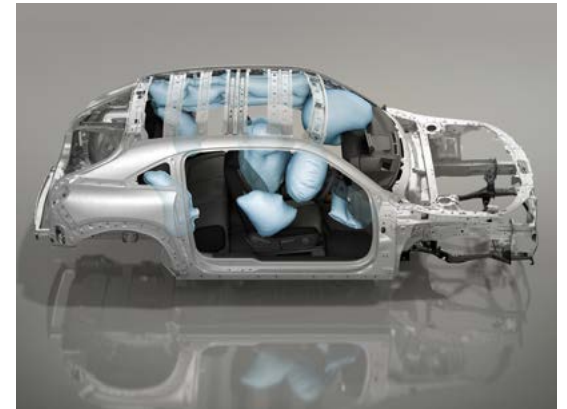
Providing a lightweight chassis that delivers driving pleasure and comfort, leading to that pure 'Jinba-ittai' oneness between car and driver. The perfectly fine tuned chassis provides our famed driving experience of agility at low and medium speeds, and stability at motorway speeds for both driving pleasure and comfort.



### SKYACTIV-BODY

For a car to excel in its basic functions - accelerate, turn and stop - it must have a lean body, but also be sturdy to ensure safety. Mazda MX-30's body has been designed around these elements leading to a light, rigid and robust body that ensures safe and joyful driving.

The all-electric Mazda MX-30 has been awarded the maximum five-star rating by Euro NCAP in its latest series of tests with 91% and 87% scores in its respective adult and child occupancy categories.



## ADVANCED TECHNOLOGY



### COLOUR ACTIVE DRIVING DISPLAY (HEAD-UP DISPLAY)

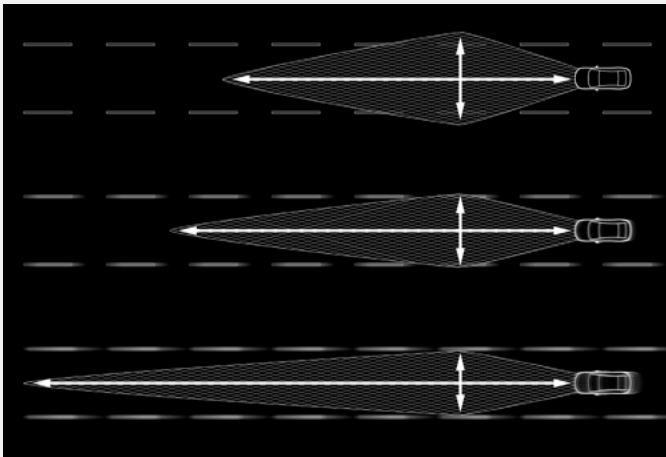
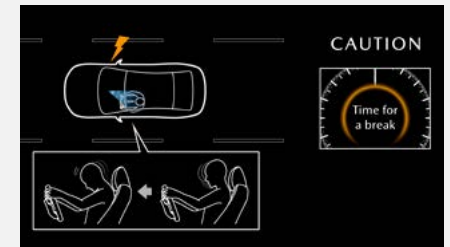
The system includes Traffic Sign Recognition and projects full-colour information directly onto the windscreen within the driver's line of sight. The displayed information is divided into upper and lower sections: driving information, including navigation, turn-by-turn direction and speed limit information displayed in the upper section, while vehicle status, including current speed and advanced safety equipment status, is displayed in the lower section.

(Standard across the range)

### DRIVER MONITORING

Detects sleepiness or inattention by monitoring changes in expression or movement of the driver's line of sight. A camera and infrared LED monitor the driver's condition both day and night. If the system determines that the driver has fallen asleep or is inattentive, it sounds an alert to make the driver aware while also preparing for automatic braking to help prepare for a potential incident.

(Standard on Makoto and Edition R models)



### ADAPTIVE LED HEADLIGHTS

Mazda's Adaptive LED Headlights provide the ultimate in headlight technology, lighting up the road ahead as if it were daytime and allowing anybody to enjoy safe and stress-free driving at any time of day. The system increases visibility at night to help drivers stay vigilant by combining three technologies: Wide-range Low Beams which light up a wider area at low speeds, Highway mode which helps you see further when travelling at speed, and Glare-free High Beams which automatically dim part of the illuminated area to avoid dazzling other drivers.

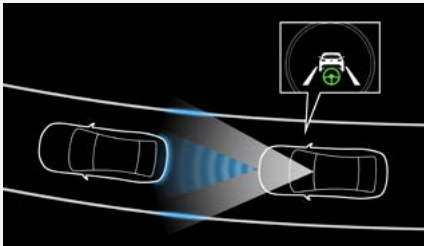
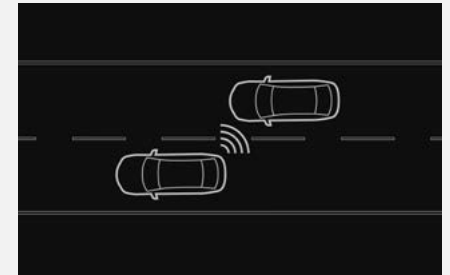
(Standard on Makoto and Edition R)

## ADVANCED TECHNOLOGY

### BLIND SPOT MONITORING (BSM)

BSM uses radars mounted in the rear bumper to detect vehicles approaching from behind and in the adjacent lane. It alerts the driver to the presence of vehicles in the blind spot on either side by displaying an icon in the appropriate door mirror. If the driver indicates to change lanes with a vehicle in the blind spot, the icon flashes and a warning beep is sounded.

(Standard across the range)



### CRUISING & TRAFFIC SUPPORT (CTS)

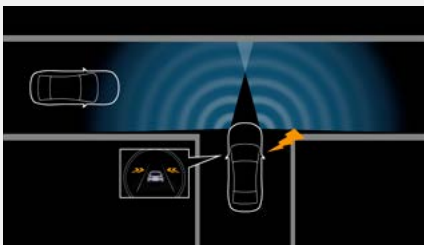
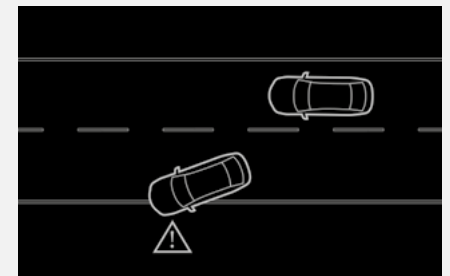
Automatically operates acceleration and braking to maintain a proper trailing distance between your Mazda and the vehicle ahead. In addition, it assists with steering operations to keep the car within its lane. CTS contributes to reducing driver fatigue, as well as supporting a safer, more reassuring and more comfortable driving experience.

(Standard on Makoto and Edition R models)

### EMERGENCY LANE KEEPING – BLIND SPOT ASSIST & ROAD KEEP ASSIST

Blind Spot Assist will assist steering operation when changing lanes when the system detects vehicles approaching from the rear or side of the vehicle. Road Keep Assist features an enhanced camera function to enable the detection of grass and curbs along the roadside to help prevent departure from the road even on roads without lanes. Both systems work when the MX-30 is traveling at approximately 37mph or above. And help the driver to avoid potential collisions and mitigates damage in the event of a collision.

(Standard across the range)



### FRONT CROSS TRAFFIC ALERT

Mazda's newly developed system detects other vehicles approaching from blind spots at the front right or left of the vehicle and alerts the driver of their presence. This helps prevent a common cause of accidents, when cars enter a T-junction with a partially obscured view.

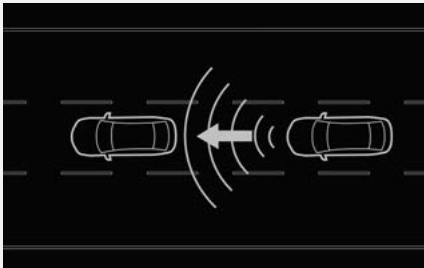
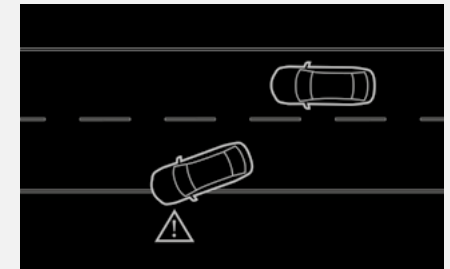
(Standard on Makoto and Edition R models)

## ADVANCED TECHNOLOGY

### LANE DEPARTURE WARNING SYSTEM WITH LANE KEEP ASSIST SYSTEM

Designed to prevent your vehicle from inadvertently straying from its lane. A front view camera monitors the road ahead and calculates the car's position relative to the lane markings. If the system detects the vehicle is moving out of its lane unintentionally, the steering wheel will vibrate and an audible alert will sound. The system will also take corrective action to help you stay within the lanes through assisted steering.

(Standard across the range)



### MAZDA RADAR CRUISE CONTROL

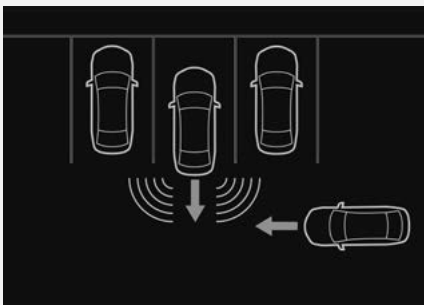
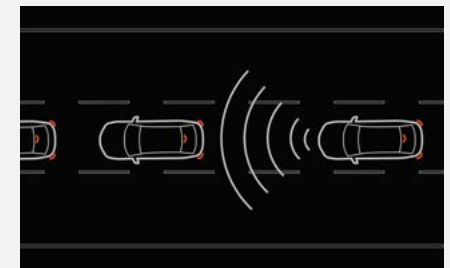
To activate, the driver sets a maximum speed (just as with cruise control) and size of the gap to maintain. The radar watches for traffic ahead and once the system senses a vehicle in front, the car will slow down and speed up automatically maintaining the driver's pre-set distance. It also features 'Stop & Go', meaning the vehicle will automatically accelerate and brake in start/stop traffic with minimal input from the driver.

(Standard across the range)

### SMART BRAKE SUPPORT – FRONT

Alerts the driver of a possible collision using the warning indications in the display and a warning sound if the front radar sensor and Forward Sensing Camera determine that there is the possibility of a collision with a vehicle ahead, pedestrian, or a bicycle. Furthermore, if a collision is unavoidable, the automatic brake control is performed to reduce damage in the event of a collision. In addition, when the driver depresses the brake pedal, the brakes are applied firmly and quickly to assist.

(Standard across the range)



### SMART BRAKE SUPPORT – REAR

Reduces damage in the event of a collision by operating the brake control when the system's sensors detect an obstruction at the rear.

### SMART BRAKE SUPPORT – REAR CROSSING

Assists in avoiding collisions and reducing damage in the event of a collision by applying the brakes if there is the possibility of collision with a vehicle approaching from the rear while you are reversing out of parking space.

(Standard on Makoto and Edition R models)

# MAZDA SERVICES

## MAZDA SERVICE PLANS

MODEL	ENGINE	PRICE~	MONTHLY PAYMENT~
Mazda MX-30	e-SKYACTIV EV	£399	£12.09
	e-SKYACTIV R-EV	TBC	TBC

~Service plan pricing and monthly payment pricing is for new vehicles up to one month of age since first registration. Both are inclusive of VAT.

Take the hassle out of servicing your car by opting for a Mazda Service Plan from your Mazda dealer. For a one off payment or manageable monthly sum, your annual Mazda servicing can be covered for up to 3 years. Contact your Mazda dealer for more information on the options available. At participating dealers only.

The maximum service interval for your Mazda is 12,500 miles or 12 months whichever occurs first, however, the servicing intervals may reduce based on the style of driving and the conditions under which your vehicle is operated.



Mazda Service Plans cover parts, labour & fluids at the prevailing VAT rate for the first three scheduled services. You have the choice of paying for your Mazda Service Plan with a one-off payment, or by monthly Direct Debit payments over the duration of the Plan. Please contact your Mazda Authorised Dealer for more information. The servicing for Mazda Service Plans can only be carried out at a Mazda Authorised Dealer. At participating Dealers only and plan must be activated prior to the vehicle's first service.

## BATTERY WARRANTY

MODEL	WARRANTY PERIOD
Mazda MX-30	8 Years

## VEHICLE TAX RATES Tax year 2023-24

CO <sub>2</sub> EMISSIONS FIGURE (G/KM)	PETROL & RDE2 DIESEL - FIRST YEAR RATE	ALTERNATIVE FUEL CARS - FIRST YEAR RATE	STANDARD RATE (12 months)	
			PETROL/DIESEL CARS	ALTERNATIVE FUEL CARS
0	£0	£0	£180	£170
1-50	£10	£0	£180	£170
51-75	£30	£20	£180	£170
76-90	£130	£120	£180	£170
91-100	£165	£155	£180	£170
101-110	£185	£175	£180	£170
111-130	£210	£200	£180	£170
131-150	£255	£245	£180	£170
151-170	£645	£635	£180	£170
171-190	£1,040	£1,030	£180	£170
191-225	£1,565	£1,555	£180	£170
226-255	£2,220	£2,210	£180	£170
Over 255	£2,605	£2,595	£180	£170

First-year rate is paid when first registering a vehicle and is for the first 12 months Vehicle Excise Duty. After the first 12 months, the standard rate applicable at that time is payable. Vehicles with a list price >£40k will be subject to a premium of £390 over the Standard Rate for 5 years from the start of the second licence.

## MAZDA FINANCIAL SERVICES

Mazda Financial Services offers a variety of finance and insurance products to suit the needs of both private and business customers. With our wide range of plans and services, no-one is more committed to delivering complete motoring confidence and total peace of mind than Mazda and Mazda Financial Services.

## MAZDA INSURANCE

When you buy your new Mazda from a Mazda franchised dealer, we'll give you free comprehensive Driveaway Insurance so you can get on the road there and then. Upgrade to our annual cover and benefit from our Mazda Accident Repair Promise all year round. In the event of an accident, unlike most other insurers, we guarantee to repair your Mazda at a Mazda Approved Bodyshop using only Mazda Genuine Parts. This helps to protect your Mazda's safety rating, resale value and manufacturer warranty. Plus, you'll also get windscreen damage cover, EU cover and a complimentary courtesy car. We'll even pay your cancellation fee if you're insured elsewhere\*. Eligibility criteria, terms and conditions apply.

Ask your dealer or call Mazda Insurance on 0330 102 7995.

Get a quote online at [www.mazdacarinsurance.co.uk](http://www.mazdacarinsurance.co.uk)

Mazda Insurance is arranged and administered by Verex Insurance Services Ltd which arranges policies from a panel of insurers.

\*Offer not available online. Offer conditions apply.

## MAZDA EXCESS RETURN VOUCHER

When you apply for Free Driveaway Insurance for your new Mazda, you'll also receive a free 1-year Excess Return voucher which pays back up to £250 of your insurance excess cost, regardless of who you're insured with, if you use our Call Mazda First service. If you have a Mazda Excess Return voucher and need to make an insurance claim, simply Call Mazda First before your insurer on 0800 015 0367.

## FREE MAZDA ACCIDENT AFTERCARE

In the event of an accident, Call Mazda First 0800 015 0367 before your insurer for free 24-hour Accident AfterCare and to redeem your £250 Excess Return voucher.

Our dedicated case handlers will liaise with your insurer and arrange Mazda Genuine Parts and repairs at a Mazda Approved Bodyshop, keeping your Mazda 100% Mazda and maintaining your Mazda warranties. We'll also provide accident recovery if your Mazda isn't driveable and a free courtesy car during the repair. Terms and conditions apply.

Save 0800 015 0367 to your mobile phone.

## TAX FREE – DIPLOMATIC AND MILITARY SALES

For further information contact your Mazda dealer or contact Mazda on 03457 48 48 48.

## MOTABILITY

For all Motability enquiries please contact your Mazda dealer or contact Mazda on 03457 48 48 48.

This price list, dated 1 April 2023, supersedes all previous price lists. It includes changes to Vehicle Excise Duty as confirmed in the October 2018 budget affecting estimated 'On the Road' prices. Final prices shown are estimated 'On the Road' prices and are inclusive of number plates, 12 months' Vehicle Excise Duty and first registration fee. Certain models may be subject to changes in CO<sub>2</sub> emission levels and Vehicle Excise Duty Bands. Due to ongoing updates the specification (including fuel consumption, CO<sub>2</sub> emissions and equipment) of the vehicle you order and receive may be different to that detailed in this guide. Please speak to your dealer for the latest information. Images may not be to UK specification. Finance subject to status. Terms and conditions apply. Applicants must be 18 or over. Guarantee may be required. Mazda Financial Services, RH1 1SR.

# DRIVE TOGETHER

Mazda Motors UK reserves the right to introduce changes in specification and equipment due to its ongoing product development. Prices are subject to change without prior notice. Colour and trim samples shown in this digital brochure may vary from the actual colours because of the variations of resolutions and colours found in various screen displays, and if printed, limitations within the printing process. Models shown may not be to UK specification. It is recommended that you consult your Mazda dealer when referring to these. Apple CarPlay®, Android Auto™ and Bose are registered trademarks in the U.S. and other countries. Used with permission. The Bluetooth® word mark and logos are owned by the Bluetooth SIG, Inc. and any use of such marks by Mazda Motor Company is under licence. Other trademarks and trade names are those of their respective owners.

[www.mazda.co.uk](http://www.mazda.co.uk)

Mazda Helpline: 03457 48 48 48

Effective from 1 April 2023