

2022 MAZDA CX-30



PRICE AND SPECIFICATION GUIDE



WELCOME...

The Mazda CX-30 is our stylish award winning SUV that provides a smooth, refined ride coupled together with Mazda's renowned driving experience. Designed around Mazda's 'car and driver as one' philosophy, the Mazda CX-30 has been designed to fit into a variety of lifestyles. Whether its driving the morning commute, driving the kids to school, or even packing your bags and hitting the road for a weekend break, the Mazda CX-30 will provide you with the flexibility to fit your lifestyle.



reddot winner 2020



Stylish and tough

Designed with the flowing beauty of a coupe and the bold toughness of an SUV, the award winning styling provides the car with the road presence and looks that will have you looking twice when admiring this SUV. Inside, you will find high levels of specification as standard, including the windscreen projected colour Active Driving Display, Mazda Radar Cruise Control, Mazda Connect infotainment, Apple CarPlay® and Android Auto™ connectivity, as well as a comfortable and commanding driving position and flexible 60:40 split fold rear seating.

Safety

And when it comes to safety, you could be in no safer hands. The Mazda CX-30 has been awarded the maximum five-star rating by Euro NCAP. The Mazda CX-30 performed impressively in all four Euro NCAP test categories - Adult Occupant, Child Occupant, Vulnerable Road User (pedestrian safety) and Safety Assist.

With an exceptional 99% score in the Adult Occupant category, the Mazda CX-30 achieved maximum points for frontal full-width impact, as well as for both barrier and pole side impacts. Mazda's Smart Brake Support system also gained full marks in low-speed tests, with collisions avoided in all scenarios.



This Price & Specification Guide has been designed to enable you to discover more about the Mazda CX-30. Inside you'll find information on its key features, what they do, as well as technical information.

So what are you waiting for...



THE LATEST IN TECHNOLOGY & CONVENIENCE

MAZDA CONNECT

The latest in-car infotainment

Mazda Connect allows for seamless connectivity between you and your Mazda. Information is displayed on a beautiful & clear central 8.8" screen which is perfectly positioned at eye level.

Access vehicle information and settings, entertainment options including DAB Radio, connect your smartphone via Bluetooth to make and receive calls, access your phonebook, and access the European wide Navigation system which comes with 5-years free map updates.



MULTIMEDIA COMMANDER

Easy to use, driver centric, eyes on the road

The Multimedia Commander provides simple and easy access to the Mazda Connect infotainment system. The tactile feel plays to the senses allowing for ease of use whilst on the move, and more importantly, allows you to keep your eyes on the road.



APPLE CARPLAY® & ANDROID AUTO™ Smarter, safer way to use your smartphone

With Apple CarPlay®, get easy access to Apple Music, Maps, Messages and make phone calls with Siri through the car's Multimedia Commander or voice commands.

Android Auto™ also allows you to access your favourite music and messaging apps, Google Maps and Google Play Music. Google Assistant voice control helps you send and receive messages, make calls, get directions and plan your day while you keep your eyes safely on the road.

BOSE PREMIUM SOUND SYSTEM Made to move you

Fitted as standard to our GT Sport & GT Sport Tech grades, the high performance speakers make you feel like you're at the front row of your favourite concert, making you feel immersed in whatever you're listening to.

The premium sound system includes all of the latest Bose technologies such as CenterPoint, BassMatch and AudioPilot which all contribute to an immersive entertainment experience.



THE FLEXIBILITY TO FIT INTO YOUR LIFE

WEEKEND AWAY, PACK YOUR BAGS

Your companion for the perfect weekend away. With a luggage capacity of 430 litres, the CX-30's generous boot allows you to bring everything that you need.

Practicality is further enhanced with a 60:40 split rear bench to accommodate those larger items.

Featured on Sport Lux grades and above, convenience is increased with an automated power liftgate for handsfree access to the boot.



MAZDA CX-30 MHEV PRICING

e-Skyactiv G Petrol

	PRICE	VAT	P11D VALUE	FIRST YEAR VED & DVLA FIRST REG FEE*	ESTIMATED 'ON THE ROAD' RETAIL	CO ₂ EMISSIONS (G/KM)-	BIK TAX (%)^	2022/23 MONTHLY TAX LIABILITY 20%/40%	INSURANCE GROUP
Mazda CX-30 122ps 2WD SE-L	£20,300.00	£4,060.00	£24,360	£285	£24,645	134	31%	£126/£252	12E
Mazda CX-30 122ps 2WD SE-L Lux	£21,550.00	£4,310.00	£25,860	£285	£26,145	134	31%	£134/£267	13E
Mazda CX-30 122ps 2WD SE-L Lux Auto	£22,800.00	£4,560.00	£27,360	£285	£27,645	143	33%	£150/£301	12E
Mazda CX-30 122ps 2WD Sport Lux	£22,466.67	£4,493.33	£26,960	£285	£27,245	134	31%	£139/£279	13E
Mazda CX-30 122ps 2WD Sport Lux Auto	£23,716.67	£4,743.33	£28,460	£285	£28,745	144	33%	£157/£313	12E
Mazda CX-30 122ps 2WD GT Sport Edition	£23,808.33	£4,761.67	£28,570	£285	£28,855	134	31%	£148/£295	14E
Mazda CX-30 122ps 2WD GT Sport	£24,058.33	£4,811.67	£28,870	£285	£29,155	134	31%	£149/£298	13E
Mazda CX-30 122ps 2WD GT Sport Edition Auto	£25,058.33	£5,011.67	£30,070	£285	£30,355	144	33%	£165/£331	13E
Mazda CX-30 122ps 2WD GT Sport Auto	£25,308.33	£5,061.67	£30,370	£285	£30,655	144	33%	£167/£334	13E
Mazda CX-30 122ps 2WD GT Sport Tech Edition	£24,558.33	£4,911.67	£29,470	£285	£29,755	134	31%	£152/£305	14E
Mazda CX-30 122ps 2WD GT Sport Tech	£24,808.33	£4,961.67	£29,770	£285	£30,055	134	31%	£154/£308	13E
Mazda CX-30 122ps 2WD GT Sport Tech Edition Auto	£25,808.33	£5,161.67	£30,970	£285	£31,255	144	33%	£170/£341	13E
Mazda CX-30 122ps 2WD GT Sport Tech Auto	£26,058.33	£5,211.67	£31,270	£285	£31,555	144	33%	£172/£344	13E

e-Skyactiv X Petrol

	PRICE	VAT	P11D VALUE	FIRST YEAR VED & DVLA FIRST REG FEE*	ESTIMATED 'ON THE ROAD' RETAIL	CO ₂ EMISSIONS (G/KM)-	BIK TAX (%)^	2022/23 MONTHLY TAX LIABILITY 20%/40%	INSURANCE GROUP
Mazda CX-30 186ps 2WD SE-L Lux	£23,133.33	£4,626.67	£27,760	£245	£28,005	127	30%	£139/£278	19E
Mazda CX-30 186ps 2WD SE-L Lux Auto	£24,383.33	£4,876.67	£29,260	£285	£29,545	137	32%	£156/£312	18E
Mazda CX-30 186ps 2WD Sport Lux	£24,383.33	£4,876.67	£29,260	£245	£29,505	128	30%	£146/£293	20E
Mazda CX-30 186ps 2WD Sport Lux Auto	£25,633.33	£5,126.67	£30,760	£285	£31,045	138	32%	£164/£328	19E
Mazda CX-30 186ps 2WD GT Sport Edition	£25,725.00	£5,145.00	£30,870	£245	£31,115	128	30%	£154/£309	20E
Mazda CX-30 186ps 2WD GT Sport	£25,975.00	£5,195.00	£31,170	£245	£31,415	128	30%	£156/£312	20E
Mazda CX-30 186ps 2WD GT Sport Edition Auto	£26,975.00	£5,395.00	£32,370	£285	£32,655	138	32%	£173/£345	20E
Mazda CX-30 186ps 2WD GT Sport Auto	£27,225.00	£5,445.00	£32,670	£285	£32,955	138	32%	£174/£348	20E
Mazda CX-30 186ps AWD GT Sport Edition	£27,558.33	£5,511.67	£33,070	£285	£33,355	137	32%	£176/£353	20E
Mazda CX-30 186ps AWD GT Sport	£27,808.33	£5,561.67	£33,370	£285	£33,655	137	32%	£178/£356	20E
Mazda CX-30 186ps AWD GT Sport Edition Auto	£28,808.33	£5,761.67	£34,570	£285	£34,855	149	34%	£196/£392	20E
Mazda CX-30 186ps AWD GT Sport Auto	£29,058.33	£5,811.67	£34,870	£285	£35,155	149	34%	£198/£395	20E
Mazda CX-30 186ps 2WD GT Sport Tech Edition	£26,475.00	£5,295.00	£31,770	£245	£32,015	128	30%	£159/£318	20E
Mazda CX-30 186ps 2WD GT Sport Tech	£26,725.00	£5,345.00	£32,070	£245	£32,315	128	30%	£160/£321	21E
Mazda CX-30 186ps 2WD GT Sport Tech Edition Auto	£27,725.00	£5,545.00	£33,270	£285	£33,555	138	32%	£177/£355	20E
Mazda CX-30 186ps 2WD GT Sport Tech Auto	£27,975.00	£5,595.00	£33,570	£285	£33,855	138	32%	£179/£358	20E
Mazda CX-30 186ps AWD GT Sport Tech Edition	£28,308.33	£5,661.67	£33,970	£285	£34,255	137	32%	£181/£362	20E
Mazda CX-30 186ps AWD GT Sport Tech	£28,558.33	£5,711.67	£34,270	£285	£34,555	137	32%	£183/£366	20E
Mazda CX-30 186ps AWD GT Sport Tech Edition Auto	£29,558.33	£5,911.67	£35,470	£285	£35,755	149	34%	£201/£402	20E
Mazda CX-30 186ps AWD GT Sport Tech Auto	£29,808.33	£5,961.67	£35,770	£285	£36,055	149	34%	£203/£405	20E

~Figures shown are for comparability purposes; only compare fuel consumption and CO₂ figures with other cars tested to the same technical procedures. These figures may not reflect real life driving results, which will depend upon a number of factors including the accessories fitted (post-registration), variations in weather, driving styles and vehicle load. All figures quoted are derived from the latest WLTP test cycle.

*First year rate Vehicle Excise Duty as of 1 April 2022, includes £55 DVLA first registration fee. ^BIK effective from 6 April 2022.

Pricing and specification are subject to change. Please speak with your local dealer for latest pricing information.

MAZDA CX-30 GRADE HIGHLIGHTS

SE-L from £24,645

STANDARD FEATURES:

EXTERIOR

- 16" Grey alloy wheels
- B-Pillar & C-Pillar garnish in Satin black
- Body coloured electrically-adjustable, heated, auto power-folding door mirrors
- Front grille in Satin black with Chrome finish Signature wing
- Front rain-sensing wipers
- LED headlights with auto levelling
- Dusk sensing headlights
- Halogen daytime running lights
- High Beam Control
- Rear parking sensors
- Gloss black roof spoiler

INTERIOR

- Premium dark grey cloth seat trim with black interior accents
- Colour 7" TFT instrument cluster display (provides speed, traffic signs and Mazda Radar Cruise Control information)
- Electronic Parking Brake with auto-hold and auto-disengage function

INFOTAINMENT

- AM / FM / DAB radio, with 8 speakers and USB input
- Apple CarPlay® & Android Auto™
- Connected Services*
- Integrated Bluetooth®
- Mazda Connect multimedia system with 8.8" Colour centre display and Multimedia Commander
- Mazda Navigation System with European mapping and 5-years free map updates

COMFORT AND CONVENIENCE

- Air-conditioning
- Electric windows
- Mazda Radar Cruise Control
- Windscreen projected colour Active Driving Display

SAFETY AND SECURITY

- Blind Spot Monitoring with Rear Cross Traffic Alert
- Driver Attention Alert
- e-Call with GPS
- Intelligent Speed Assist
- Lane-keep Assist System with Lane Departure Warning System
- Smart Brake Support – Front
- Remote central locking with deadlocking and automatic door lock when driving
- Traffic Sign Recognition



Model shown: Mazda CX-30 122ps 2WD SE-L in Deep Crystal Blue.

SE-L LUX from £26,145

IN ADDITION TO SE-L GRADE, SE-L LUX ADDS:

EXTERIOR

- Auto-dimming driver door mirror
- Reversing camera
- Front and rear parking sensors

INTERIOR

- Auto-dimming rear-view mirror
- Heated front seats

COMFORT AND CONVENIENCE

- Drive selection switch (Sport mode) (Automatic models only)
- Dual zone climate-controlled air-conditioning with rear air vents
- Mazda Radar Cruise Control (Automatic Transmission features Stop and Go)

SAFETY AND SECURITY

- Smart keyless entry



Mazda CX-30 122ps 2WD SE-L Lux in Sonic Silver.

*Connected Services is a subscription service and requires a compatible mobile device to download and sign-up to the MyMazda App. A 3-year complimentary period is included and commences from the date of first registration of the vehicle. Please contact your dealer or visit www.mazda.co.uk/my-mazda for further information. Pricing and specification are subject to change. Please speak with your local dealer for latest pricing information.

SPORT LUX from £27,245

IN ADDITION TO SE-L LUX GRADE, SPORT LUX ADDS:

EXTERIOR

- 18" Silver alloy wheels (e-Skyactiv G models only)
- 18" Bright alloy wheels (e-Skyactiv X models only)
- B-Pillar and C-Pillar garnish in Piano black
- Front grille in Gloss black with Chrome finish Signature wing
- Adaptive LED Headlights
- Signature front LED daytime running lights
- Power liftgate
- Power tilt and slide sunroof (e-Skyactiv X models only)
- Rear privacy glass
- Signature LED rear combination lights

INTERIOR

- Frameless auto-dimming rear-view mirror
- Steering wheel mounted paddle shift (Automatic models only)



Model shown: Mazda CX-30 122ps 2WD Sport Lux in Polymetal Grey.

GT SPORT EDITION / GT SPORT from £28,855

IN ADDITION TO SPORT LUX GRADE,
GT SPORT EDITION / GT SPORT ADDS:

EXTERIOR

- Door mirror tilt down function when reversing

INTERIOR

- Black leather seat trim* with Rich Brown interior accents
- Driver seat power slide, recline, height and lumbar adjustment with head-up display and driver door mirror memory
- Heated steering wheel

INFOTAINMENT

- AM / FM / DAB radio featuring 12-Speaker Bose surround sound system, with Bose CenterPoint, BassMatch and AudioPilot technology**



Model shown: Mazda CX-30 186ps 2WD GT Sport in Soul Red Crystal.

GT SPORT TECH EDITION / GT SPORT TECH from £29,755

IN ADDITION TO GT SPORT GRADE,
GT SPORT TECH EDITION / GT SPORT TECH ADDS:

EXTERIOR

- 360° View Monitor (provides a birdseye view with front, rear and side mounted cameras)

SAFETY AND SECURITY

- Cruising and Traffic Support
- Driver Monitoring
- Front Cross Traffic Alert
- Smart Brake Support - Rear
- Smart Brake Support - Rear Crossing

*Leather refers to centre seat facing and side supports. **Not available on GT Sport Edition and GT Sport Tech Edition. Pricing and specification are subject to change. Please speak with your local dealer for latest pricing information.

MAZDA CX-30 INTERIOR TRIMS AND COLOURATION



PREMIUM DARK GREY CLOTH
WITH BLACK INTERIOR ACCENTS
(Standard on SE-L, SE-L Lux and Sport Lux only)



BLACK LEATHER[^]
WITH RICH BROWN INTERIOR ACCENTS
(Standard on GT Sport Edition / GT Sport &
GT Sport Tech Edition / GT Sport Tech only)



STONE LEATHER[^]
WITH RICH BROWN INTERIOR ACCENTS
(Optional on e-Skyactiv X - GT Sport Tech Edition &
GT Sport Tech models only at additional cost)



Factory-fitted options

	BASIC PRICE	VAT	RRP
Stone leather trim [^] with Rich Brown Interior Accents*	£166.67	£33.33	£200

[^]Leather refers to centre seat facing and side supports. *Available on e-Skyactiv X GT Sport Tech Edition & GT Sport Tech models only.

MAZDA CX-30 PAINT FINISH OPTIONS



ARCTIC WHITE



SNOWFLAKE WHITE



PLATINUM QUARTZ



SONIC SILVER



POLYMETAL GREY



DEEP CRYSTAL BLUE



JET BLACK



MACHINE GREY



SOUL RED CRYSTAL

Exterior Colours

	BASIC PRICE	VAT	RRP
Arctic White	£0.00	£0.00	£0.00
Snowflake White / Platinum Quartz / Sonic Silver / Polymetal Grey / Deep Crystal Blue / Jet Black	£475.00	£95.00	£570
Machine Grey	£575.00	£115.00	£690
Soul Red Crystal	£675.00	£135.00	£810

Mazda Motors UK reserves the right to introduce changes in pricing, specification and equipment due to its ongoing product development. Colour and trim samples shown in this digital brochure may vary from the actual colours because of the variations of resolutions and colours found in various screen displays, and if printed, limitations within the printing process. Models shown may not be to UK specification. It is recommended that you consult your Mazda dealer when referring to these.

MAZDA CX-30 ALLOY WHEELS



16" GREY ALLOY WHEELS
Standard on SE-L & SE-L Lux Grades



18" SILVER ALLOY WHEELS
Standard on Sport Lux, GT Sport Edition / GT Sport
& GT Sport Tech Edition / GT Sport Tech Grades
(e-Skyactiv G models only)



18" BRIGHT ALLOY WHEELS
Standard on Sport Lux, GT Sport Edition / GT Sport
& GT Sport Tech Edition / GT Sport Tech Grades
(e-Skyactiv X models only)

ACCESSORY ALLOY WHEELS

We have a range accessories available including a range of accessory alloy wheels, so that you can make your Mazda CX-30 more individual to you.

For more information on the entire range of accessories we retail, please [CLICK HERE](#), select your vehicle and visit the 'Options & Accessories' section.



Options & Accessories: A small selection of our range of accessories are shown within this Price and Specification guide. For more information on the entire range of accessories we retail, please visit www.mazda.co.uk/configurator, select your vehicle and visit the 'Options & Accessories' section. The price shown is a non-binding recommendation of Mazda Motors UK, is subject to change and may not include extras. Alloy wheel prices do not include tyres. Accessory fitment costs may differ between Mazda dealers. For further information about Mazda Genuine Accessories and latest pricing including any fitment cost differences please contact your local Mazda dealer.

MAZDA CX-30 SPECIFICATIONS

Exterior

		SE-L	SE-L Lux	Sport Lux	GT Sport Edition/ GT Sport	GT Sport Tech Edition/ GT Sport Tech
B-Pillar and C-Pillar garnish:	Satin Black	•	•	-	-	-
	Gloss Black	-	-	•	•	•
Door mirrors:	Body coloured electrically-adjustable, heated, auto power-folding door mirrors	•	•	•	•	•
	With auto-dimming (Drivers mirror only)	-	•	•	•	•
	With adjustable memory and tilt-down function when in reverse	-	-	-	•	•
Front Grille:	Chrome finish signature wing	•	•	•	•	•
	Satin Black	•	•	-	-	-
	Gloss Black	-	-	•	•	•
Headlights:	LED, with auto headlight levelling	•	•	•	•	•
	Coming home / leaving home lights	•	•	•	•	•
	Dusk-sensing headlights	•	•	•	•	•
	Signature front LED daytime running lights	-	-	•	•	•
	High Beam Control (HBC) Detects oncoming and preceding vehicles and automatically switches between high and low beams during night driving, making it easier for the driver to recognise hazards	•	•	-	-	-
	Adaptive LED Headlights (ALH) The ultimate in headlight technology. Combining three technologies: Glare-free High Beams which automatically dim part of the illuminated area to avoid dazzling other drivers, Wide-range Low Beams which light up a wider area at low speeds and Highway mode which helps you see further when travelling at speed	-	-	•	•	•
Kodo Turn Signal - distinctive light signature that starts at full power and then fades in sequential pulses		•	•	•	•	•
Parking aids:	Reversing camera	-	•	•	•	-
	360° View Monitor Provides a birdseye view of your vehicle. The system consists of four cameras providing views of the top, front, sides, and rear	-	-	-	-	•
Parking sensors (audible and visual warning):	Rear	•	-	-	-	-
	Front and Rear	-	•	•	•	•
Power liftgate:	Operational by button located on dashboard, key fob, or button located on tailgate	-	-	•	•	•
Privacy glass:	Rear side and rear windows	-	-	•	•	•
Rear lights:	LED rear combination lights	•	•	-	-	-
	Signature LED rear combination lights	-	-	•	•	•
Rear roof spoiler:	Gloss Black	•	•	•	•	•
Sunroof:	Power tilt and slide (e-Skyactiv X models only)	-	-	•	•	•
Tailpipes:	Dual - Chrome tip	•	•	•	•	•
Tyres and wheels:	16" Grey alloy wheels with 215/65 R16 tyres	•	•	-	-	-
	18" Silver alloy wheels with 215/55 R18 tyres (e-Skyactiv G models only)	-	-	•	•	•
	18" Bright alloy wheels with 215/55 R18 tyres (e-Skyactiv X models only)	-	-	•	•	•
Wipers:	Front, rain-sensing with adjustable sensitivity and speed	•	•	•	•	•
	Rear	•	•	•	•	•

• = Standard equipment; - = Not available; O = Option available at additional cost.

Interior

		SE-L	SE-L Lux	Sport Lux	GT Sport Edition/ GT Sport	GT Sport Tech Edition/ GT Sport Tech
12v Electrical power outlet:		•	•	•	•	•
Chrome interior trim accents:	Steering wheel centre bezel, surround of engine start / stop button and glove box handle	-	-	-	•	•
Door panel trim:	Dark cloth insert	•	•	•	-	-
	Dark vinyl insert	-	-	-	•	•
Electronic Parking Brake with auto-hold and auto-disengage function		•	•	•	•	•
Gear shift:	Leather-wrapped	•	•	•	•	•
Grab handles:	Driver, Front passenger's and two rear, with rear coat hooks	•	•	•	•	•
Instrument cluster:	Trip computer	•	•	•	•	•
	Colour 7" TFT display (provides speed, traffic signs and Mazda Radar Cruise Control information)	•	•	•	•	•
Interior colouration (Dashboard, doorcards and front centre armrest):	Black (Premium Dark Grey cloth interior only)	•	•	•	-	-
	Rich Brown (Black/Stone leather interior only)	-	-	-	•	•
Interior Mirror:	Auto-dimming rear-view mirror	-	•	-	-	-
	Frameless auto-dimming rear-view mirror	-	-	•	•	•
Interior trim:	Premium dark grey cloth seat trim	•	•	•	-	-
	Black Leather seat trim*	-	-	-	•	•
	Stone Leather trim* (e-Skyactiv X models only)	-	-	-	-	O^
Roof headlining:	Light (ceiling and pillars)	•	•	•	•	•
Seats (front):	Driver's seat manual tilt, slide, recline and height adjustment	•	•	•	-	-
	Driver's seat power tilt, slide, recline, height and lumbar adjustment with head-up display and driver door mirror memory	-	-	-	•	•
	Front passenger's seat manual slide, recline and height adjustment	•	•	•	•	•
	Heated with 3-stage setting	-	•	•	•	•
Seats (rear):	3 x height-adjustable head restraints	•	•	•	•	•
	60:40 split fold down rear seats	•	•	•	•	•
	Folding centre armrest equipped with two cup holders	•	•	•	•	•
Steering wheel:	Leather-wrapped	•	•	•	•	•
	Telescopic and tilt adjustment	•	•	•	•	•
	Heated	-	-	-	•	•
	Paddle shift for automatic transmission	-	-	•	•	•
Storage spaces:	Door storage (driver, front passenger and two rear)	•	•	•	•	•
	Glovebox with interior illumination	•	•	•	•	•
	Seatback pocket (located on rear of front passenger seat)	•	•	•	•	•
	Front centre storage with two cupholders	•	•	-	-	-
	Front centre storage with two cupholders with lid	-	-	•	•	•
	Roof mounted sunglasses holder	•	•	•	•	•

• = Standard equipment; - = Not available; O = Option available at additional cost.

^e-Skyactiv X GT Sport Tech Edition & GT Sport Tech models only (subject to availability).

* Leather refers to centre seat facing and side supports.

Infotainment

		SE-L	SE-L Lux	Sport Lux	GT Sport Edition/ GT Sport	GT Sport Tech Edition/ GT Sport Tech
Apple CarPlay® & Android Auto™	In-car assistant systems that let you access certain features of your smartphone through Mazda Connect	•	•	•	•	•
Integrated Bluetooth®:	Allows audio transfer from Bluetooth® devices, hands-free calling and easy access to phone contacts via steering wheel controls or Multimedia Commander	•	•	•	•	•
Mazda Connect (Multimedia System):	AM / FM / DAB radio with eight speakers	•	•	•	-	-
	AM / FM / DAB radio featuring 12-Speaker Bose surround sound system, with Bose CenterPoint, BassMatch and AudioPilot technology	-	-	-	- / • ¹⁾	- / • ¹⁾
	8.8" Colour centre display	•	•	•	•	•
	Steering wheel-mounted audio and Bluetooth® controls	•	•	•	•	•
	USB input x2	•	•	•	•	•
Mazda Connected Services ²⁾ :	Accessed via the MyMazda App which provides you with information about your vehicle, you can also access many other features like remote controls, vehicle finder and send a destination to your car	•	•	•	•	•
Mazda Navigation System:	European mapping with 5-years free map updates	•	•	•	•	•
Multimedia Commander:	Located between the driver and front passenger, the Multimedia Commander allows easy control of the advanced connectivity and infotainment system, with information displayed on the 8.8" colour centre screen, includes a separate volume control dial	•	•	•	•	•

• = Standard equipment; - = Not available.

Please visit mazda.co.uk for more information.

¹⁾ Bose not available on GT Sport Edition and GT Sport Tech Edition.

²⁾ Connected Services is a subscription service and requires a compatible mobile device to download and sign-up to the MyMazda App. A 3-year complimentary period is included and commences from the date of first registration of the vehicle. Please contact your dealer or visit www.mazda.co.uk/my-mazda for further information.

Comfort and Convenience

		SE-L	SE-L Lux	Sport Lux	GT Sport Edition/ GT Sport	GT Sport Tech Edition/ GT Sport Tech
Adaptive Cruise Control - Mazda Radar Cruise Control (MRCC) (Automatic features Stop & Go function)		•	•	•	•	•
Air Conditioning:	Manual air-conditioning	•	-	-	-	-
	Dual zone climate-controlled air-conditioning with rear air vents	-	•	•	•	•
Cruising & Traffic Support (CTS):	Where conditions allow, assists the driver with accelerator, brake and steering functions when following a vehicle ahead in heavy traffic, helping to reduce driver fatigue	-	-	-	-	•
Drive selection switch (Automatic only):	When the 'Sport' mode is selected, vehicle's response against accelerator operation is enhanced. This provides additional quick acceleration which may be needed to safely make manoeuvres such as lane changes, merging onto motorways, or passing other vehicles	-	•	•	•	•
Electric windows:	Front and rear, with one-touch operation	•	•	•	•	•
Engine start / stop button		•	•	•	•	•
G-Vectoring Control Plus (GVC Plus):	Provides better handling and a smoother ride. Aids in emergency avoidance manoeuvres and offers more control in various situations.	•	•	•	•	•
Head-up Display:	Windscreen Projected Colour Active Driving Display (head-up Display) Projects full-colour information directly onto the windscreen within the driver's line of sight, including navigation, speed and vehicle status.	•	•	•	•	•
Interior Lighting:	Front & rear with LED illumination	•	•	•	•	•
Luggage compartment:	LED illumination	•	•	•	•	•
Sun visors:	Driver's and front passenger's with covered vanity mirror and driver's ticket holder	•	•	•	•	•

• = Standard equipment; - = Not available; O = Option available at additional cost.

Safety and Security

		SE-L	SE-L Lux	Sport Lux	GT Sport Edition/ GT Sport	GT Sport Tech Edition/ GT Sport Tech
Airbags:	Front dual stage driver and single stage front passenger	•	•	•	•	•
	Front side airbags	•	•	•	•	•
	Front and rear curtain airbags	•	•	•	•	•
	Front driver knee airbag	•	•	•	•	•
	Front passenger airbag cut-off switch	•	•	•	•	•
Anti-lock Braking System (ABS)		•	•	•	•	•
Blind Spot Monitoring (BSM) with Rear Cross Traffic Alert (RCTA):	Uses a system of sensors to alert the driver when a vehicle enters a blind spot	•	•	•	•	•
Driver Attention Alert (DAA):	Designed to reduce accidents caused by inattentiveness due to driver fatigue. The system watches inputs and the vehicle's movements in the early stages before fatigue is a factor.	•	•	•	•	•
Driver Monitoring (DM):	A camera within the centre display screen monitors the driver's facial movements to detect driver fatigue, encouraging the driver to take a rest where needed	-	-	-	-	•
Dynamic Stability Control (DSC)		•	•	•	•	•
e-Call with GPS:	In the case of an accident, either provides a manual or automated message to the emergency services, which includes the vehicle's location. (European locations only)	•	•	•	•	•
Emergency Stop Signalling system (ESS)		•	•	•	•	•
Emergency tyre repair kit		•	•	•	•	•
Front Cross Traffic Alert (FCTA):	When pulling out of junctions, FCTA checks for approaching vehicles either side of the front of your vehicle. When an oncoming vehicle is detected, it sounds a warning.	-	-	-	-	•
Hill Launch Assist (HLA):	When starting off from an incline, HLA helps prevent the car from rolling backwards when the driver moves their foot from the brake to the accelerator pedal by maintaining an automatic brake	•	•	•	•	•
Intelligent Speed Assist (ISA):	A driver operated speed-limiting system that works in conjunction with Traffic Sign Recognition (TSR) to help keep drivers from exceeding the speed limit unintentionally	•	•	•	•	•
ISOFIX child seat anchorage; attached to outer rear seats		•	•	•	•	•
Lane-keep Assist System (LAS) with Lane Departure Warning System (LDWS):	The system detects the line markings on the road surface, and instantly warns you in case of unintentional lane departure, whilst also assisting to steer the vehicle to keep within its lane	•	•	•	•	•
Pre-crash safety - Smart Brake Support (SBS):	Front (SBS) - designed to reduce the risk of accidents by helping the driver avoid frontal collisions	•	•	•	•	•
	Rear (SBS-R) - designed to reduce the risk of accidents by helping the driver avoid rear-end collisions	-	-	-	-	•
	Rear Crossing (SBS-RC) - detects vehicles approaching from the rear left and rear right sides of the vehicle while it is being reversed out of a parking space	-	-	-	-	•
Remote central locking with deadlocking		•	•	•	•	•
Smart keyless entry:	Allows opening and locking of the vehicle without removing the key from your pocket or bag	-	•	•	•	•
Seatbelt reminder audible warning:	Driver, passenger and rear seats	•	•	•	•	•
Thatcham Accredited alarm and immobiliser		•	•	•	•	•
Traction Control System (TCS)		•	•	•	•	•
Traffic Sign Recognition (TSR)		•	•	•	•	•
Tyre Pressure Monitoring System (TPMS)		•	•	•	•	•

• = Standard equipment; - = Not available.

MAZDA CX-30 TECHNICAL INFORMATION

Model availability	2.0 e-SKYACTIV G Petrol	2.0 e-SKYACTIV G Petrol	2.0 e-SKYACTIV X Petrol	2.0 e-SKYACTIV X Petrol	2.0 e-SKYACTIV X Petrol	2.0 e-SKYACTIV X Petrol
	2WD	2WD	2WD	2WD	AWD	AWD
	122ps Manual	122ps Auto	186ps Manual	186ps Auto	186ps Manual	186ps Auto
SE-L	•	-	-	-	-	-
SE-L Lux	•	•	•	•	-	-
Sport Lux	•	•	•	•	-	-
GT Sport Edition / GT Sport	•	•	•	•	•	•
GT Sport Tech Edition / GT Sport Tech	•	•	•	•	•	•

Dimensions	
Overall length / width ¹⁾ / height (mm)	4,395 / 1,795 (2,040) / 1,540
Wheelbase (mm)	2,655
Ground clearance between the axles – unladen (mm)	180
Front track / Rear track (mm)	1,565 / 1,565
Front headroom ²⁾ / leg room / shoulder room (mm)	967 (961) ²⁾ / 1,058 / 1,412
Rear headroom / leg room / shoulder room (mm)	973 / 921 / 1,361
Cargo volume, acc. to VDA (l) ³⁾ :	5-seat mode to belt line including underfloor storage (without Bose / with Bose)
	2-seat mode including underfloor storage (without Bose / with Bose)
	430 / 422
	1,406 / 1,398
Brake Type - Front / Rear	Ventilated / Solid
Brake Dimensions (mm) - Front / Rear	2WD - 295 / 265 AWD - 295 / 303
Steering	
Steering gear	Electric Power Assist Steering (Rack and Pinion)
Wall-to-wall turning circle (M)	11.4

¹⁾ Vehicle width excludes mirrors. Figures in brackets includes mirrors.

²⁾ Figures in brackets are for vehicles fitted with power tilt and slide sunroof.

³⁾ Includes underfloor storage.



5-door SUV		2.0 e-SKYACTIV G Petrol	2.0 e-SKYACTIV G Petrol	2.0 e-SKYACTIV X Petrol	2.0 e-SKYACTIV X Petrol	2.0 e-SKYACTIV X Petrol	2.0 e-SKYACTIV X Petrol
		2WD	2WD	2WD	2WD	AWD	AWD
		122ps Manual	122ps Auto	186ps Manual	186ps Auto	186ps Manual	186ps Auto
Displacement (cc)		1998	1998	1998	1998	1998	1998
Bore x Stroke (mm)		83.5 x 91.2	83.5 x 91.2	83.5 x 91.2	83.5 x 91.2	83.5 x 91.2	83.5 x 91.2
Valves per cylinder		4	4	4	4	4	4
Compression ratio		13:1	13:1	15:1	15:1	15:1	15:1
FUEL SAVING TECHNOLOGY							
i-stop system Saves fuel by switching off the engine when the car stops		•	•	•	•	•	•
Mazda M Hybrid 24-volt battery to support the engine which helps improve your fuel economy and reduce emissions		•	•	•	•	•	•
Cylinder deactivation Engine seamlessly switches between four and two-cylinder operation to improve real-world fuel economy and lower emissions whilst at cruising speeds		•	•	-	-	-	-
PERFORMANCE							
Maximum power output ps (KW) / rpm		122 (90/6,000)	122 (90/6,000)	186 (137/6,000)	186 (137/6,000)	186 (137/6,000)	186 (137/6,000)
Max. torque (Nm / rpm)		213/4,000	213/4,000	240/4,000	240/4,000	240/4,000	240/4,000
Acceleration (0-62 mph in seconds)		10.6	11.2	8.3	8.6 (8.7)^	8.8	9.0
Top speed (mph)		116	116	127	127	127	127
FUEL ECONOMY AND CO₂ EMISSIONS							
WLTP fuel consumption ¹⁾ mpg (l/100km)	Low	38.7 (7.3)	33.2 (8.5) - 33.6 (8.4)	42.8 (6.6)	37.7 (7.5)	38.7 (7.3)	35.8 (7.9)
	Medium	50.4 (5.6)	47.1 (6.0)	52.3 (5.4)	48.7 (5.8)	47.9 (5.9)	46.3 (6.1)
	High	55.4 (5.1)	52.3 (5.4)	56.5 (5.0) - 57.6 (4.9)	53.3 (5.3) - 54.3 (5.2)	52.3 (5.4)	49.6 (5.7)
	Extra High	44.1 (6.4) - 44.8 (6.3)	42.8 (6.6)	46.3 (6.1)	43.5 (6.5)	44.1 (6.4)	39.2 (7.2)
	Combined	47.9 (5.9)	44.1 (6.4) - 44.8 (6.3)	49.6 (5.7) - 50.4 (5.6)	46.3 (6.1)	46.3 (6.1)	42.8 (6.6)
WLTP CO ₂ emissions ¹⁾ (g/km)		134	144 - 143	128 - 127	138 - 137	137	149
EC emission level		Euro Stage6d					
Recommended fuel		Unleaded 95 RON					
Fuel tank capacity (litres)		51				48	
WEIGHTS							
Maximum Kerb weight (kg) incl. driver (75kg) 16" Alloy Wheels / 18" Alloy Wheels		1,452 / 1,482	1,480 / 1,510	1,506 / 1,540	1,529 / 1,565	1,612	1,629
Permitted gross vehicle weight (kg)	Total	1,927	1,957	1,965	1,965	2,042	2070,
	Front/rear	997 / 930	1,029 / 928	1,070 / 895	1,097 / 868	1,089 / 952	1,119 / 951
Towing limit (kg) ²⁾ :	Braked	1,300	1,300	1,300	1,300	1,300	1,300
	Unbraked	600	600	600	600	600	600
Maximum roof load (kg)		75	75	75	75	75	75

^Figures in brackets are for vehicles fitted with 18" alloy wheels.

¹⁾ Figures shown are for comparability purposes; only compare fuel consumption and CO₂ figures with other cars tested to the same technical procedures. These figures may not reflect real life driving results, which will depend upon a number of factors including the accessories fitted (post-registration), variations in weather, driving styles and vehicle load. All figures quoted are derived from the latest WLTP test cycle.

²⁾ Towing capacity is based on a 12% gradient and tested in accordance with 92/21/EEC as amended by 95/48/EC

MAZDA CX-30 ACCESSORIES AND EQUIPMENT OVERVIEW

We know how complicated buying a new car can be when it comes to deciphering the latest technology. That's why we have taken the time to provide you with some clarity on what's available on the Mazda CX-30, to help you make the right choice as to which grade will suit your lifestyle best.

Within this section we provide information on just some of our latest options & accessories, details on our engine & hybrid technology, as well as information on our Skyactiv-Vehicle Dynamics and our Advanced Safety Technology.

We don't only make cars that are involving and easy to operate, we do this with our Price & Specification guide also to enable you to make the best decision.

Then all that is left to do is to experience the Mazda CX-30 for yourself. To find your local dealer and to arrange a Test Drive, [CLICK HERE](#)



OPTIONS & ACCESSORIES



FRONT AIRDAM SKIRT*
£462.75



REAR AIRDAM SKIRT*
£404.58



STAINLESS STEEL REAR BUMPER PROTECTION PLATE
£129.00



DOOR MIRROR COVER - BLACK
£128.81



SILVER ROOF RAILS
£420.96

*Available on e-Skyactiv G models only.

Options & Accessories: A small selection of our range of accessories are shown within this Price and Specification guide. For more information on the entire range of accessories we retail, please visit www.mazda.co.uk/configurator, select your vehicle and visit the 'Options & Accessories' section. The price shown is a non-binding recommendation of Mazda Motors UK, is subject to change and may not include extras. Alloy wheel prices do not include tyres. Accessory fitment costs may differ between Mazda dealers. For further information about Mazda Genuine Accessories and latest pricing including any fitment cost differences please contact your local Mazda dealer.

OPTIONS & ACCESSORIES



DETACHABLE TOW BAR WITH 13 PIN WIRING HARNESS
£708.68



SMART CARGO SYSTEM
£406.32



DURABLE BOOT LINER*
£75.00



ILLUMINATED SCUFF PLATES
£313.98



LUXURY FLOOR MATS
£85.00



CX-30 LOGO LED PUDDLE LIGHTS
£177.71

Options & Accessories: A small selection of our range of accessories are shown within this Price and Specification guide. For more information on the entire range of accessories we retail, please visit www.mazda.co.uk/configurator, select your vehicle and visit the 'Options & Accessories' section. The price shown is a non-binding recommendation of Mazda Motors UK, is subject to change and may not include extras. Alloy wheel prices do not include tyres. Accessory fitment costs may differ between Mazda dealers. For further information about Mazda Genuine Accessories and latest pricing including any fitment cost differences please contact your local Mazda dealer.

*Durable Boot Liner only for vehicles fitted with Smart Cargo System

SKYACTIV ENGINE TECHNOLOGY

e-SKYACTIV G

The 2.0 122ps e-Skyactiv G engine is a highly-efficient direct-injection petrol engine, that achieves impressive engine efficiency thanks to the high compression combustion, resulting in excellent fuel economy and low CO₂ emissions.

e-Skyactiv G also features cylinder deactivation, delivering further improvements in economy and efficiency by automatically switching between two-cylinder and four-cylinder operation when cruising at constant speeds and not when under heavy loads. The engine shuts down two of the four cylinders with fuel injection and injection timing precisely controlled, so that the cylinder deactivation isn't noticeable to the driver.

MAZDA M HYBRID

Mazda M Hybrid is our innovative evolution of hybrid car technology. It uses four main components to capture energy that is normally wasted during braking. It stores that energy within the 24v Lithium-ion Battery and uses it to assist the engine and power the car's electrical systems, meaning you can drive further on a tank of fuel whilst also contributing to lower CO₂ emissions and other particulates.

The Mazda CX-30 features this new technology which comes as standard on both e-Skyactiv G and e-Skyactiv X petrol engines. The result is a car that delivers outstanding performance, low running costs and strong environmental credentials.

e-SKYACTIV X

The 2.0 186ps e-Skyactiv X powertrain is the very latest in engine technology providing more power, improved fuel efficiency and even lower CO₂ emissions. Exclusive to Mazda, e-Skyactiv X burns petrol more efficiently thanks to our pioneering Spark Controlled Compression Ignition (SPCCI).

With SPCCI, an extremely lean mix of fuel and air are compressed to an extremely high pressure. A spark then ignites a very small, dense amount of fuel, which further raises the heat and pressure in the cylinder, causing the remaining fuel to ignite under pressure (like a diesel). This means you get all the performance of a naturally aspirated petrol engine, but with the fuel economy and low CO₂ emissions of a Diesel.





SKYACTIV-VEHICLE DYNAMICS: TRANSMISSIONS, CHASSIS AND BODY

TRANSMISSIONS

SKYACTIV-MT is a light and compact manual transmission system that combines superior fuel economy with the crisp shifting feel of a sports car, ensuring perfect control.

Also available is Mazda's highly efficient, 6-speed SKYACTIV-DRIVE automatic transmission. Featuring the best attributes of CVT, Dual Clutch and conventional automatic transmissions, SKYACTIV-DRIVE provides you with a direct feel with smooth gear shifts leading to great fuel economy.*



SKYACTIV-CHASSIS

Providing a lightweight chassis that delivers driving pleasure and comfort, leading to that pure 'Jinba-ittai' oneness between car and driver. The perfectly fine tuned chassis provides our famed driving experience of agility at low and medium speeds, and stability at motorway speeds for both driving pleasure and comfort.



SKYACTIV-BODY

For a car to excel in its basic functions - accelerate, turn and stop - it must have a lean body, but also be sturdy to ensure safety. Mazda CX-30's body has been designed around these elements leading to a light, rigid and robust body that ensures safe and joyful driving.

The Mazda CX-30 performed impressively in all four of Euro NCAP crash test categories - Adult Occupant, Child Occupant, Vulnerable Road User (pedestrian safety) and Safety Assist, and even achieved an exceptional 99% score in the Adult Occupant category.



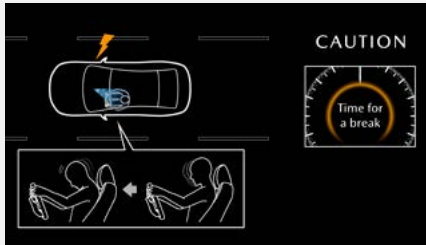
* SKYACTIV-DRIVE Automatic Transmission is unavailable on SE-L Grades

ADVANCED TECHNOLOGY

COLOUR ACTIVE DRIVING DISPLAY (HEAD-UP DISPLAY)

The system includes Traffic Sign Recognition and projects full-colour information directly onto the windscreen within the driver's line of sight. The displayed information is divided into upper and lower sections: driving information, including navigation, turn-by-turn direction and speed limit information displayed in the upper section, while vehicle status, including current speed and advanced safety equipment status, is displayed in the lower section.

(Standard across the range)



DRIVER MONITORING

Detects sleepiness or inattention by monitoring changes in expression or movement of the driver's line of sight. A camera and infrared LED monitor the driver's condition both day and night. If the system determines that the driver has fallen asleep or is inattentive, it sounds an alert to make the driver aware while also preparing for automatic braking to help prepare for a potential incident.

(Standard on GT Sport Tech Edition/GT Sport Tech models)

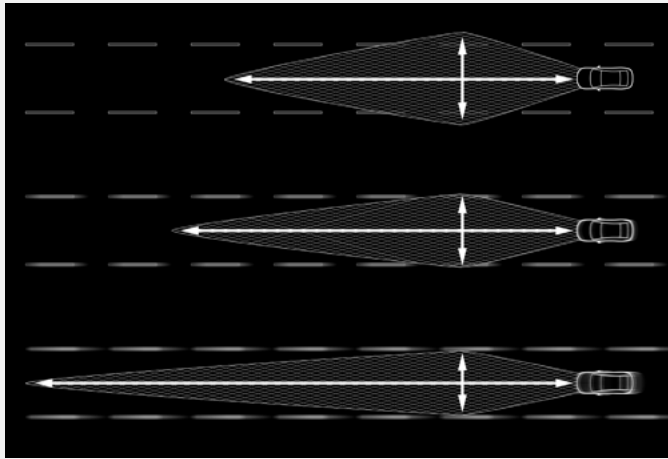
i-ACTIV AWD

Whether you are on the motorway on a dark and rainy night or driving up a snowy country road, Mazda's all-wheel-drive system is designed to provide safety and comfort with fuel efficiency. Our engineers have developed i-ACTIV AWD to constantly monitor road conditions in real-time, watching for tiny variations in wheel speed that a driver would never notice. The system proactively controls the distribution of torque to all four wheels providing solid and predictable handling for all-road performance.

(Available on e-Skyactiv X GT Sport Edition/GT Sport and GT Sport Tech Edition/GT Sport Tech models)



ADVANCED TECHNOLOGY



ADAPTIVE LED HEADLIGHTS

Mazda's Adaptive LED Headlights provide the ultimate in headlight technology, lighting up the road ahead as if it were daytime and allowing anybody to enjoy safe and stress-free driving at any time of day. The system increases visibility at night to help drivers stay vigilant by combining three technologies: Wide-range Low Beams which light up a wider area at low speeds, Highway mode which helps you see further when travelling at speed, and Glare-free High Beams which automatically dim part of the illuminated area to avoid dazzling other drivers.

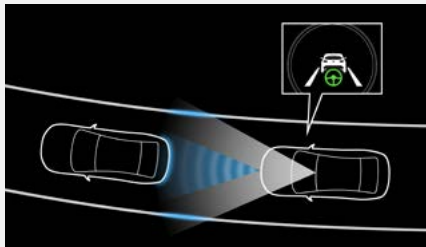
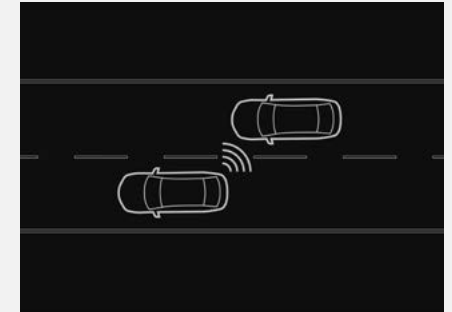
(Not available on SE-L & SE-Lux models)

BLIND SPOT MONITORING WITH REAR CROSS TRAFFIC ALERT

BSM uses radars mounted in the rear bumper to detect vehicles approaching from behind and in the adjacent lane. It alerts the driver to the presence of vehicles in the blind spot on either side by displaying an icon in the appropriate door mirror. If the driver indicates to change lanes with a vehicle in the blind spot, the icon flashes and a warning beep is sounded.

RCTA is designed to help you make sure it's safe to start backing up. The system uses the same radars and indicators as BSM to watch for vehicles coming from both sides and alert the driver when they come near.

(Standard across the range)

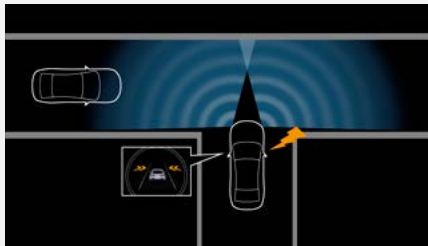


CRUISING & TRAFFIC SUPPORT (CTS)

Automatically operates acceleration and braking to maintain a proper trailing distance between your Mazda and the vehicle ahead. In addition, it assists with steering operations to keep the car within its lane. CTS contributes to reducing driver fatigue, as well as supporting a safer, more reassuring and more comfortable driving experience.

(Standard on GT Sport Tech Edition/GT Sport Tech models)

ADVANCED TECHNOLOGY



FRONT CROSS TRAFFIC ALERT

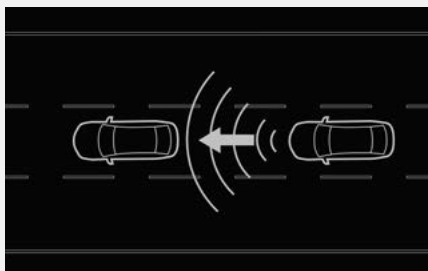
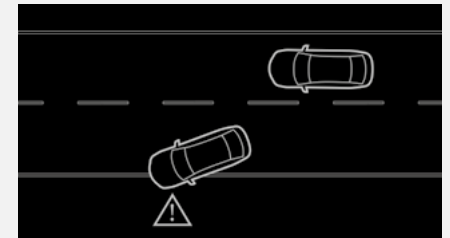
Mazda's newly developed system detects other vehicles approaching from blind spots at the front right or left of the vehicle and alerts the driver of their presence. This helps prevent a common cause of accidents, when cars enter a T-junction with a partially obscured view.

(Standard on GT Sport Tech Edition/GT Sport Tech models)

LANE DEPARTURE WARNING SYSTEM WITH LANE KEEP ASSIST SYSTEM

Designed to prevent your vehicle from inadvertently straying from its lane. A front view camera monitors the road ahead and calculates the car's position relative to the lane markings. If the system detects the vehicle is moving out of its lane unintentionally, the steering wheel will vibrate and an audible alert will sound. The system will also take corrective action to help you stay within the lanes through assisted steering.

(Standard across the range)



MAZDA RADAR CRUISE CONTROL

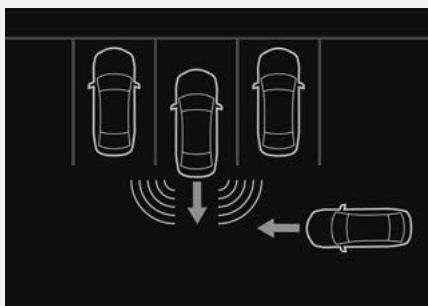
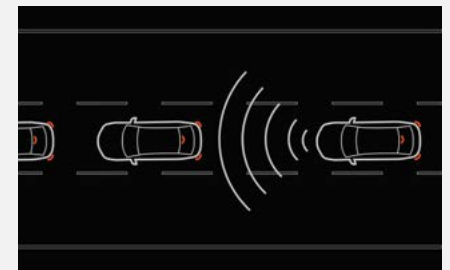
To activate, the driver sets a maximum speed (just as with cruise control) and size of the gap to maintain. The radar watches for traffic ahead and once the system senses a vehicle in front, the car will slow down and speed up automatically maintaining the driver's pre-set distance. Automatic models also have the additional feature of 'Stop & Go', meaning the vehicle will automatically accelerate and brake in start/stop traffic with minimal input from the driver.

(Standard across the range)

SMART BRAKE SUPPORT – FRONT

Alerts the driver of a possible collision using the warning indications in the display and a warning sound if the front radar sensor and Forward Sensing Camera determine that there is the possibility of a collision with a vehicle ahead, pedestrian, or a bicycle. Furthermore, if a collision is unavoidable, the automatic brake control is performed to reduce damage in the event of a collision. In addition, when the driver depresses the brake pedal, the brakes are applied firmly and quickly to assist.

(Standard across the range)



SMART BRAKE SUPPORT – REAR

Reduces damage in the event of a collision by operating the brake control when the system's sensors detect an obstruction at the rear.

SMART BRAKE SUPPORT – REAR CROSSING

Assists in avoiding collisions and reducing damage in the event of a collision by applying the brakes if there is the possibility of collision with a vehicle approaching from the rear while you are reversing out of parking space.

(Standard on GT Sport Tech Edition/GT Sport Tech models)

MAZDA SERVICES

MAZDA SERVICE PLANS

MODEL	ENGINE	PRICE
Mazda CX-30	e-SKYACTIV G	£649.00
Mazda CX-30	e-SKYACTIV X	£799.00

Take the hassle out of servicing your car by opting for a Mazda Service Plan from your Mazda dealer. For a one off payment or manageable monthly sum, your annual Mazda servicing can be covered for up to 3 years. Contact your Mazda dealer for more information on the options available. At participating dealers only.

The maximum service interval for your Mazda is 12,500 miles or 12 months whichever occurs first, however, the servicing intervals may reduce based on the style of driving and the conditions under which your vehicle is operated.



Mazda Service Plans cover parts, labour & fluids at the prevailing VAT rate for the first three scheduled services. You have the choice of paying for your Mazda Service Plan with a one-off payment, or by monthly Direct Debit payments over the duration of the Plan. Please contact your Mazda Authorised Dealer for more information. The servicing for Mazda Service Plans can only be carried out at a Mazda Authorised Dealer. At participating Dealers only and plan must be activated prior to the vehicle's first service.

VEHICLE TAX RATES Tax year 2022-23

CO ₂ EMISSIONS FIGURE (G/KM)	PETROL & RDE2 DIESEL - FIRST YEAR RATE	ALTERNATIVE FUEL CARS - FIRST YEAR RATE	STANDARD RATE (12 months)	
			PETROL/DIESEL CARS	ALTERNATIVE FUEL CARS
0	£0	£0	£165	£155
1-50	£10	£0	£165	£155
51-75	£25	£15	£165	£155
76-90	£120	£110	£165	£155
91-100	£150	£140	£165	£155
101-110	£170	£160	£165	£155
111-130	£190	£180	£165	£155
131-150	£230	£220	£165	£155
151-170	£585	£575	£165	£155
171-190	£945	£935	£165	£155
191-225	£1,420	£1,410	£165	£155
226-255	£2,015	£2,005	£165	£155
Over 255	£2,365	£2,355	£165	£155

First-year rate is paid when first registering a vehicle and is for the first 12 months Vehicle Excise Duty. After the first 12 months, the standard rate applicable at that time is payable. Vehicles with a list price >£40k will be subject to a premium of £355 over the Standard Rate for 5 years. This does not apply to zero-emission vehicles.

MAZDA FINANCIAL SERVICES

Mazda Financial Services offers a variety of finance and insurance products to suit the needs of both private and business customers. With our wide range of plans and services, no-one is more committed to delivering complete motoring confidence and total peace of mind than Mazda and Mazda Financial Services.

MAZDA INSURANCE

When you buy your new Mazda from a Mazda franchised dealer, we'll give you free comprehensive Driveaway Insurance so you can get on the road there and then. Upgrade to our annual cover and benefit from our Mazda Accident Repair Promise all year round. In the event of an accident, unlike most other insurers, we guarantee to repair your Mazda at a Mazda Approved Bodyshop using only Mazda Genuine Parts. This helps to protect your Mazda's safety rating, resale value and manufacturer warranty. Plus, you'll also get windscreen damage cover, EU cover and a complimentary courtesy car. We'll even pay your cancellation fee if you're insured elsewhere*. Eligibility criteria, terms and conditions apply.

Ask your dealer or call Mazda Insurance on 0330 102 7995.

Get a quote online at www.mazdacarinsurance.co.uk

Mazda Insurance is arranged and administered by Verex Insurance Services Ltd which arranges policies from a panel of insurers.

*Offer not available online. Offer conditions apply.

MAZDA EXCESS RETURN VOUCHER

When you apply for Free Driveaway Insurance for your new Mazda, you'll also receive a free 1-year Excess Return voucher which pays back up to £250 of your insurance excess cost, regardless of who you're insured with, if you use our Call Mazda First service. If you have a Mazda Excess Return voucher and need to make an insurance claim, simply Call Mazda First before your insurer on 0800 015 0367.

FREE MAZDA ACCIDENT AFTERCARE

In the event of an accident, Call Mazda First 0800 015 0367 before your insurer for free 24-hour Accident AfterCare and to redeem your £250 Excess Return voucher.

Our dedicated case handlers will liaise with your insurer and arrange Mazda Genuine Parts and repairs at a Mazda Approved Bodyshop, keeping your Mazda 100% Mazda and maintaining your Mazda warranties. We'll also provide accident recovery if your Mazda isn't driveable and a free courtesy car during the repair. Terms and conditions apply.

Save 0800 015 0367 to your mobile phone.

TAX FREE – DIPLOMATIC AND MILITARY SALES

For further information contact your Mazda dealer or contact Mazda on 03457 48 48 48.

MOTABILITY

For all Motability enquiries please contact your Mazda dealer or contact Mazda on 03457 48 48 48.

This price list, dated 1 September 2022, supersedes all previous price lists. It includes changes to Vehicle Excise Duty as confirmed in the October 2018 budget affecting estimated 'On the Road' prices. Final prices shown are estimated 'On the Road' prices and are inclusive of number plates, 12 months' Vehicle Excise Duty and first registration fee. Certain models may be subject to changes in CO₂ emission levels and Vehicle Excise Duty Bands. Due to ongoing updates the specification (including fuel consumption, CO₂ emissions and equipment) of the vehicle you order and receive may be different to that detailed in this guide. Please speak to your dealer for the latest information. Images may not be to UK specification. Finance subject to status. Terms and conditions apply. Applicants must be 18 or over. Guarantee may be required. Mazda Financial Services, RH1 1SR.

DRIVE TOGETHER

Mazda Motors UK reserves the right to introduce changes in specification and equipment due to its ongoing product development. Prices are subject to change without prior notice. Colour and trim samples shown in this digital brochure may vary from the actual colours because of the variations of resolutions and colours found in various screen displays, and if printed, limitations within the printing process. Models shown may not be to UK specification. It is recommended that you consult your Mazda dealer when referring to these. Apple CarPlay®, Android Auto™ and Bose are registered trademarks in the U.S. and other countries. Used with permission. The Bluetooth® word mark and logos are owned by the Bluetooth SIG, Inc. and any use of such marks by Mazda Motor Company is under licence. Other trademarks and trade names are those of their respective owners.

www.mazda.co.uk

Mazda Helpline: 03457 48 48 48

Effective from 1 September 2022