

# THE MAZDA FLEET RANGE GUIDE





## WHY MAZDA

### [I am a company car driver](#)

With award-winning technology, high specifications and advanced safety features, Mazda offers unrivalled company car driving pleasure. With a combination of competitive P11D values, CO<sub>2</sub> and low BIK, Mazda is the perfect choice for your new company car.

### [I am a Fleet Decision Maker](#)

Choosing the right cars for your fleet can be taxing - our team of Regional Corporate Sales Managers are on hand to assist with all your Mazda Fleet queries. You'll be delighted you got in touch.

### [I am a Business Owner / Business Decision Maker](#)

The benefits of choosing Mazda are numerous - our value proposition extends to class leading whole life costs, strong residual values and excellent reliability. Whether you decide to buy outright or lease your next car, we make the process simple and cost effective - leaving you to focus on your business.

### [Contact Us](#)



CLICK TO SELECT



MAZDA2



MAZDA2 HYBRID



MAZDA3 HATCHBACK



MAZDA3 SALOON



MAZDA6 SALOON



MAZDA6 TOURER



MAZDA CX-30



MAZDA CX-5



MAZDA CX-60



MAZDA MX-30 BEV



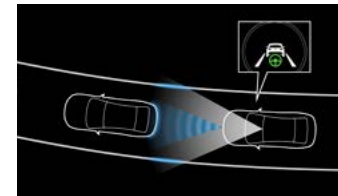
BATTERY ELECTRIC  
VEHICLE



SKYACTIV ENGINES  
AND HYBRID  
TECHNOLOGY



SKYACTIV VEHICLE  
ARCHITECTURE



ADVANCED  
TECHNOLOGY



2022 MAZDA2  
THE PERFECT SMALL CITY CAR



## 2022 MAZDA2 MHEV\*

2022 Mazda2 is here, with a sophisticated exterior design, new technology, improved refinement and an upgraded interior.

Manual transmission\* models feature Mazda's Mild Hybrid system - Mazda M Hybrid - helping to deliver CO<sub>2</sub> emissions as low as 107g/km and combined MPG of up to 60.1 mpg, making Mazda2 the ideal choice for fleet operators looking to control costs and reduce emissions.

Responsive and fun to drive, all Mazda2 models are powered by Mazda's renowned e-Skyactiv G\* petrol engine, giving you the unique feeling of oneness with the car we call Jinba Ittai.

\*Available on 90ps manual transmission & 115ps manual transmission models only.





# 2022 MAZDA2 GRADE HIGHLIGHTS

	SE-L	SPORT	GT SPORT	GT SPORT TECH
EXTERIOR	<ul style="list-style-type: none"> <li>• 15" Silver alloy wheels</li> <li>• Electrically-adjustable, heated, auto power folding door mirrors</li> <li>• Front rain-sensing wipers</li> <li>• LED Headlights with auto levelling</li> <li>• Rear parking sensors</li> </ul>	<ul style="list-style-type: none"> <li>• 16" Bright alloy wheels</li> <li>• Rear privacy glass</li> <li>• Shark fin antenna</li> <li>• Signature LED daytime running lights</li> </ul>	<ul style="list-style-type: none"> <li>• Reversing camera</li> </ul>	<ul style="list-style-type: none"> <li>• 360° View Monitor (front, rear and side cameras)</li> <li>• Adaptive LED Headlights</li> <li>• Front and rear parking sensors</li> </ul>
INTERIOR	<ul style="list-style-type: none"> <li>• Auto-dimming rear view mirror</li> <li>• Brown cloth with black inserts</li> <li>• Driver &amp; passenger seat manual slide, recline and height adjustment</li> <li>• Leather trimmed steering wheel, gear shift and handbrake lever</li> </ul>	<ul style="list-style-type: none"> <li>• Blue cloth with black inserts</li> </ul>	<ul style="list-style-type: none"> <li>• Blue/Grey leather with Black Granlux® inserts</li> <li>• Colour Active Driving Display (Head-Up Display)</li> <li>• Heated front seats</li> <li>• Heated steering wheel</li> </ul>	
INFOTAINMENT	<ul style="list-style-type: none"> <li>• Wired Apple CarPlay® &amp; wired Android Auto™</li> <li>• Integrated Bluetooth®</li> <li>• Mazda Connect (Multimedia system) with 8" colour touch-screen and 6 speaker AM/FM/DAB radio</li> <li>• Mazda Navigation System with 5-years free European map updates</li> </ul>	<ul style="list-style-type: none"> <li>• Wireless Apple CarPlay® &amp; wired Android Auto™</li> </ul>		
COMFORT AND CONVENIENCE	<ul style="list-style-type: none"> <li>• Climate control air-conditioning</li> <li>• Electric windows</li> <li>• Keyless ignition (Engine start/stop button)</li> <li>• Cruise control with adjustable speed limiter</li> </ul>	<ul style="list-style-type: none"> <li>• Drive mode selection switch with steering wheel paddle-shift controls (Automatic only)</li> </ul>		
SAFETY AND SECURITY	<ul style="list-style-type: none"> <li>• Advance Smart City Brake Support (90ps models only)</li> <li>• Hill Launch Assist</li> <li>• Lane Departure Warning System (90ps models only)</li> <li>• Lane-keep Assist System (90ps models only)</li> </ul>	<ul style="list-style-type: none"> <li>• Smart keyless entry</li> </ul>		<ul style="list-style-type: none"> <li>• Blind Spot Monitoring with Rear Cross Traffic Alert</li> <li>• Driver Attention Alert</li> <li>• Smart City Brake Support - Rear</li> </ul>

\*Specification is not exhaustive. Please see [www.mazda.co.uk](http://www.mazda.co.uk) for further information or download a Price & Specification Guide.

# 2022 MAZDA2 PRICING - PETROL



MAZDA2 SKYACTIV-G	P11D VALUE	CO <sub>2</sub> EMISSIONS (G/KM) <sup>1</sup>	BIK TAX (20/40% <sup>2</sup> )	0-62MPH (SECS)
75ps SE-L	£16,980	109	£74/£147	11.3
90ps SE-L MHEV	£17,880	107	£77/£155	9.8
90ps Sport MHEV	£18,730	107	£81/£162	9.8
90ps Sport Auto	£20,230	122	£98/£196	12.1
90ps GT Sport MHEV	£19,730	107	£85/£171	9.8
90ps GT Sport Auto	£21,230	122	£103/£205	12.1
115ps GT Sport Tech MHEV	£21,330	113	£96/£192	9.1

EXTERIOR COLOURS	BASIC PRICE	VAT	RRP~
Arctic White	£0	£0	£0
Snowflake White / Ceramic / Deep Crimson / Platinum Quartz / Sonic Silver / Deep Crystal Blue / Polymetal Grey / Jet Black / Eternal Blue	£466.67	£93.33	£560
Machine Grey	£566.67	£113.33	£680
Soul Red Crystal	£666.67	£133.33	£800

<sup>1</sup> BIK tax figures quoted per month in 2022/23 (except Scotland).

<sup>2</sup> Figures shown are for comparability purposes; only compare CO<sub>2</sub> figures with other cars tested to the same technical procedures. These figures may not reflect real life driving results, which will depend upon a number of factors including the accessories fitted (post-registration), variations in weather, driving styles and vehicle load. All figures quoted are derived from the latest WLTP test cycle.

~Factory fitted option prices quoted are recommended retail prices and are inclusive of VAT at 20%.

Pricing and specification are subject to change. Please speak with your local dealer for latest pricing information.

# MAZDA2 HYBRID

## OUR FIRST SELF-CHARGING HYBRID





## MAZDA2 HYBRID

Mazda2 Hybrid brings self-charging full hybrid technology to the Mazda range for the first time. Advanced hybrid technology provides great fuel economy and low emissions, along with the ability to drive in EV (Electric Vehicle mode) at low speeds, which means that no fuel is used, there are no CO<sub>2</sub> emissions and it has near silent operation.

Responsive and fun to drive, all Mazda2 Hybrid models are powered by a 1.5i petrol engine mated to an automatic transmission. Combined CO<sub>2</sub> emissions are as low as 87g/km and combined MPG of up to 74.3mpg, making Mazda2 Hybrid the ideal choice for fleet operators looking to control costs and reduce emissions.



# MAZDA2 HYBRID GRADE HIGHLIGHTS\*

	PURE	AGILE	SELECT
EXTERIOR	<ul style="list-style-type: none"> <li>• 15" Steel wheels with wheel covers</li> <li>• Automatic High Beam</li> <li>• Body coloured electrically-adjustable, heated door mirrors</li> <li>• Dusk-sensing headlights</li> <li>• Halogen Front fog lights</li> <li>• Front rain-sensing wipers</li> <li>• Halogen headlights with halogen daytime running lights</li> <li>• LED rear combination lights with Halogen indicators</li> </ul>	<ul style="list-style-type: none"> <li>• 15" Alloy wheels</li> <li>• Reversing camera</li> </ul>	<ul style="list-style-type: none"> <li>• 16" Alloy wheels</li> <li>• LED front fog lights</li> <li>• Gloss black coloured electrically-adjustable, heated, auto power-folding door mirrors</li> <li>• LED headlights with daytime running lights</li> <li>• Front and rear parking sensors</li> <li>• Privacy glass</li> <li>• LED rear combination lights with LED indicators</li> </ul>
INTERIOR	<ul style="list-style-type: none"> <li>• Analogue speedometer and Hybrid system indicator with Multi-information display</li> <li>• Black fabric seat trim</li> <li>• Electronic Parking Brake with auto-hold and auto-disengage function</li> </ul>		<ul style="list-style-type: none"> <li>• Auto-dimming rear-view mirror</li> <li>• Digital speedometer and Hybrid system indicator with Multi-information display</li> <li>• Sports style front seats finished in black fabric with synthetic leather seat trim</li> <li>• Windscreen projected heads-up display</li> </ul>
INFOTAINMENT	<ul style="list-style-type: none"> <li>• 7" Colour touch-screen centre display</li> <li>• AM/FM/DAB radio, with 4 speakers and USB input</li> <li>• Apple CarPlay® &amp; Android Auto™</li> <li>• Integrated Bluetooth®</li> </ul>	<ul style="list-style-type: none"> <li>• 8" Colour touch-screen centre display</li> <li>• AM/FM/DAB radio, with 6 speakers and USB input</li> </ul>	
COMFORT AND CONVENIENCE	<ul style="list-style-type: none"> <li>• Adjustable speed limiter</li> <li>• Climate control air-conditioning</li> <li>• Dynamic Radar Cruise Control</li> <li>• Electric windows</li> <li>• EV Drive mode</li> </ul>	<ul style="list-style-type: none"> <li>• Push button start / stop</li> </ul>	
SAFETY AND SECURITY	<ul style="list-style-type: none"> <li>• e-Call with GPS</li> <li>• Hill-start assist control</li> <li>• Lane Tracing Assist</li> <li>• Pre-collision system – Front enhanced with emergency steering assist</li> <li>• Remote central locking with deadlocking</li> <li>• Road Sign Assist</li> </ul>	<ul style="list-style-type: none"> <li>• Smart keyless entry</li> </ul>	

\*Specification is not exhaustive. Please see [www.mazda.co.uk](http://www.mazda.co.uk) for further information or download a Price & Specification Guide.



# MAZDA2 HYBRID PRICING – PETROL



MAZDA2 HYBRID	P11D VALUE	CO <sub>2</sub> EMISSIONS (G/KM) <sup>1</sup>	BIK TAX (20/40% <sup>2</sup> )	0-62MPH (SECS)
116ps Pure	£20,995	87	£77/£154	9.7
116ps Agile	£21,845	87	£80/£160	9.7
116ps Select	£24,280	92	£93/£186	9.7

## FACTORY FITTED OPTIONS

### Comfort Pack:

- Body coloured rear bumper with gloss black lower moulding
- Digital speedometer and Hybrid system indicator with Multi-information display
- Dual-zone climate control air-conditioning
- Front grille in Gloss black with lower grille satin chrome surround
- LED front fog lights
- Gloss black electrically-adjustable, heated door mirrors
- LED headlights with LED daytime running lights
- LED rear lights
- Front sports seats with driver and front passenger's seat, manual slide, recline and height adjustment
- Black fabric seats with synthetic leather trim

£816.67

£163.33

£980

## EXTERIOR COLOURS

	BASIC PRICE	VAT	RRP~
Luna White paint	£0	£0	£0
Stormy Silver, Lead Grey, Monument Bronze and Opera Black paint	£487.50	£97.50	£585
Northern White and Formal Red paint	£733.33	£146.67	£880

<sup>1</sup> BIK tax figures quoted per month in 2022/23 (except Scotland).

<sup>2</sup> Figures shown are for comparability purposes; only compare CO<sub>2</sub> figures with other cars tested to the same technical procedures. These figures may not reflect real life driving results, which will depend upon a number of factors including the accessories fitted (post-registration), variations in weather, driving styles and vehicle load. All figures quoted are derived from the latest WLTP test cycle.

~Factory fitted option prices quoted are recommended retail prices and are inclusive of VAT at 20%.

\*Available on Mazda2 Hybrid Agile models only.

Pricing and specification are subject to change. Please speak with your local dealer for latest pricing information.

# 2022 MAZDA3 HATCHBACK

2020 WORLD CAR DESIGN OF THE YEAR





## 2022 MAZDA3 HATCHBACK MHEV

The 2022 Mazda3 is the first of our new generation models that's centred around you, the driver. Ground-breaking Mazda e-Skyactiv X petrol engine technology delivers CO<sub>2</sub> emissions as low as 118g/km and combined fuel consumption up to 54.3mpg for a refined, efficient drive and exceptional environmental performance, making the Mazda3 an ideal choice.

Mazda3 also benefits from Mazda M Hybrid, an intelligent Mild Hybrid system which enables the Mazda3 to use less fuel without loss of driving pleasure.

With its powerful and seductive presence, the Mazda3 hatchback embraces the latest Kodo design language with a strong sporty appeal that stirs your senses even before you drive. The human centric cockpit and finest quality materials deliver the purest form of Jinba Ittai – a true connection between car and driver.

And thanks to Mazda's suite of i-Activsense safety technologies, backed up by a five-star EuroNCAP crash test rating, you can enjoy the Mazda3 knowing that you and your passengers are safe and comfortable.



# 2022 MAZDA3 HATCHBACK GRADE HIGHLIGHTS\*

	SE-L	SE-L LUX	SPORT LUX	GT SPORT EDITION/ GT SPORT	GT SPORT TECH EDITION/ GT SPORT TECH
EXTERIOR	<ul style="list-style-type: none"> <li>• 16" Silver alloy wheels</li> <li>• Electrically-adjustable, heated, auto power folding door mirrors</li> <li>• Front rain-sensing wipers</li> <li>• LED headlights with auto levelling</li> <li>• Rear parking sensors</li> </ul>	<ul style="list-style-type: none"> <li>• Auto-dimming driver door mirror</li> <li>• Front parking sensors</li> <li>• Reversing camera</li> </ul>	<ul style="list-style-type: none"> <li>• 18" alloy wheels</li> <li>• Adaptive LED Headlights</li> <li>• Front and rear Signature LED lights</li> <li>• Rear privacy glass</li> </ul>	<ul style="list-style-type: none"> <li>• Door mirror tilt down when reversing</li> </ul>	<ul style="list-style-type: none"> <li>• 360° View Monitor (front, rear and side cameras)</li> </ul>
INTERIOR	<ul style="list-style-type: none"> <li>• Colour 7-inch TFT instrument display</li> <li>• Electronic parking brake</li> <li>• Premium black cloth trim</li> <li>• Windscreen projected colour Active Driving Display (Head-up display)</li> </ul>	<ul style="list-style-type: none"> <li>• Auto-dimming rear view mirror</li> <li>• Heated front seats</li> </ul>	<ul style="list-style-type: none"> <li>• Frameless auto-dimming rear view mirror</li> </ul>	<ul style="list-style-type: none"> <li>• Black leather seat trim</li> <li>• Driver seat power slide, recline, height, tilt and lumbar adjustment with head-up display and driver door mirror memory</li> <li>• Heated steering wheel</li> </ul>	
INFOTAINMENT	<ul style="list-style-type: none"> <li>• Apple CarPlay® &amp; Android Auto™</li> <li>• Connected Services^</li> <li>• Integrated Bluetooth®</li> <li>• Mazda Connect (Multimedia system) with 8.8" Colour centre display and 8 speaker AM/FM/DAB radio</li> <li>• Mazda Navigation System with 5-years free European map updates</li> </ul>			<ul style="list-style-type: none"> <li>• 12-speaker Bose surround sound system, with Bose CenterPoint, BassMatch and AudioPilot technology**</li> </ul>	
COMFORT AND CONVENIENCE	<ul style="list-style-type: none"> <li>• Air-conditioning</li> <li>• Electric windows</li> <li>• Keyless ignition</li> <li>• Mazda Radar Cruise Control (Adaptive Cruise Control)</li> </ul>	<ul style="list-style-type: none"> <li>• Dual-zone climate control air-conditioning</li> </ul>	<ul style="list-style-type: none"> <li>• Drive mode selection switch with steering wheel paddle-shift controls (Automatic only)</li> <li>• Power tilt and slide sunroof (e-Skyactiv X models only)</li> </ul>		<ul style="list-style-type: none"> <li>• Cruising and Traffic Support</li> </ul>
SAFETY AND SECURITY	<ul style="list-style-type: none"> <li>• Blind Spot Monitoring with Rear Cross Traffic Alert</li> <li>• Driver Attention Alert</li> <li>• Hill Launch Assist</li> <li>• Intelligent Speed Assist</li> <li>• Lane-keep Assist System</li> <li>• Smart Brake Support – Front (Pre-crash safety system)</li> <li>• Traffic Sign Recognition</li> </ul>	<ul style="list-style-type: none"> <li>• Smart keyless entry</li> </ul>			<ul style="list-style-type: none"> <li>• Driver Monitoring</li> <li>• Front Cross Traffic Alert</li> <li>• Smart Brake Support Rear</li> <li>• Smart Brake Support Rear Crossing</li> </ul>

\*Specification is not exhaustive. Please see [www.mazda.co.uk](http://www.mazda.co.uk) for further information or download a Price & Specification Guide.

^Connected Services is a subscription service and requires a compatible mobile device to download and sign-up to the MyMazda App. A 3-year complimentary period is included and commences from the date of first registration of the vehicle. Please contact your dealer or visit [www.mazda.co.uk/my-mazda](http://www.mazda.co.uk/my-mazda) for further information.

\*\*Not available on GT Sport Edition and GT Sport Tech Edition models.



# 2022 MAZDA3 HATCHBACK PRICING - PETROL



MAZDA3 HATCHBACK e-SKYACTIV G MHEV	P11D VALUE	CO <sub>2</sub> EMISSIONS (G/KM) <sup>1</sup>	BIK TAX (20/40% <sup>2</sup> )	0-62MPH (SECS)
122ps SE-L	£23,020	124	£111/£223	10.4
122ps SE-L Lux	£24,120	124	£117/£233	10.4
122ps SE-L Lux Auto	£25,620	138	£137/£273	10.8
122ps Sport Lux	£25,220	127	£126/£252	10.4
122ps Sport Lux Auto	£26,720	140	£147/£294	10.8
122ps GT Sport Edition	£26,820	127	£134/£268	10.4
122ps GT Sport	£27,120	127	£136/£271	10.4
122ps GT Sport Edition Auto	£28,320	140	£156/£312	10.8
122ps GT Sport Auto	£28,620	140	£157/£315	10.8
122ps GT Sport Tech Edition	£27,720	127	£139/£277	10.4
122ps GT Sport Tech	£28,020	127	£140/£280	10.4

EXTERIOR COLOURS	BASIC PRICE	VAT	RRP~
Arctic White	£0	£0	£0
Snowflake White / Platinum Quartz / Polymetal Grey / Deep Crystal Blue / Jet Black	£475.00	£95.00	£570
Machine Grey	£575.00	£115.00	£690
Soul Red Crystal	£675.00	£135.00	£810

<sup>1</sup> BIK tax figures quoted per month in 2022/23 (except Scotland).

<sup>2</sup> Figures shown are for comparability purposes; only compare CO<sub>2</sub> figures with other cars tested to the same technical procedures. These figures may not reflect real life driving results, which will depend upon a number of factors including the accessories fitted (post-registration), variations in weather, driving styles and vehicle load. All figures quoted are derived from the latest WLTP test cycle.

~Factory fitted option prices quoted are recommended retail prices and are inclusive of VAT at 20%.

Pricing and specification are subject to change. Please speak with your local dealer for latest pricing information.

# 2022 MAZDA3 HATCHBACK PRICING - PETROL



MAZDA3 HATCHBACK e-SKYACTIV X MHEV	P11D VALUE	CO <sub>2</sub> EMISSIONS (G/KM) <sup>1</sup>	BIK TAX (20/40% <sup>2</sup> )	0-62MPH (SECS)
186ps SE-L Lux	£26,020	118	£121/£243	8.1
186ps Sport Lux	£27,420	120	£133/£265	8.1
186ps Sport Lux Auto	£28,920	137	£154/£308	8.5
186ps GT Sport Edition	£29,020	121	£140/£281	8.1
186ps GT Sport	£29,320	121	£142/£283	8.1
186ps GT Sport Edition Auto	£30,520	137	£163/£326	8.5
186ps GT Sport Auto	£30,820	137	£164/£329	8.5
186ps GT Sport Tech Edition	£29,920	121	£145/£289	8.1
186ps GT Sport Tech	£30,220	121	£146/£292	8.1

FACTORY FITTED OPTIONS	BASIC PRICE	VAT	RRP~
Burgundy Leather*	£166.67	£33.33	£200

EXTERIOR COLOURS	BASIC PRICE	VAT	RRP~
Arctic White	£0	£0	£0
Snowflake White / Platinum Quartz / Polymetal Grey / Deep Crystal Blue / Jet Black	£475.00	£95.00	£570
Machine Grey	£575.00	£115.00	£690
Soul Red Crystal	£675.00	£135.00	£810

<sup>1</sup> BIK tax figures quoted per month in 2022/23 (except Scotland).

<sup>2</sup> Figures shown are for comparability purposes; only compare CO<sub>2</sub> figures with other cars tested to the same technical procedures. These figures may not reflect real life driving results, which will depend upon a number of factors including the accessories fitted (post-registration), variations in weather, driving styles and vehicle load. All figures quoted are derived from the latest WLTP test cycle.

\* e-Skyactiv X GT Sport Tech hatchback models only.

~Factory fitted option prices quoted are recommended retail prices and are inclusive of VAT at 20%.

Pricing and specification are subject to change. Please speak with your local dealer for latest pricing information.



2022 MAZDA3 SALOON  
2020 WORLD CAR DESIGN OF THE YEAR



## 2022 MAZDA3 SALOON MHEV

The 2022 Mazda3 features ground breaking Mazda e-Skyactiv X petrol engine technology which delivers CO<sub>2</sub> emissions as low as 114g/km and combined fuel consumption up to 56.5mpg for a refined, efficient drive and exceptional environmental performance.

Also benefiting from Mazda M Hybrid, an intelligent Mild Hybrid system which enables the Mazda3 Saloon to use less fuel without loss of driving pleasure.

Created with a sleek, refined body, the Mazda3 Saloon embraces the latest Kodo design language with crisp, clean styling exuding pure sophistication inside and out. The humancentric cockpit and finest quality materials deliver the purest form of Jinba Ittai – a true connection between car and driver.

And thanks to Mazda's suite of i-Activsense safety technologies, backed up by a five-star EuroNCAP crash test rating, you can enjoy the Mazda3 knowing that you and your passengers are safe and comfortable.





# 2022 MAZDA3 SALOON GRADE HIGHLIGHTS\*

	SE-L LUX	SPORT LUX	GT SPORT EDITION/ GT SPORT	GT SPORT TECH EDITION/ GT SPORT TECH
EXTERIOR	<ul style="list-style-type: none"> <li>• 16" Silver alloy wheels</li> <li>• Electrically-adjustable, heated, auto power folding door mirrors with auto-dimming driver's door mirror</li> <li>• Front &amp; rear parking sensors</li> <li>• Front rain-sensing wipers</li> <li>• LED headlights with auto levelling</li> <li>• Reversing camera</li> </ul>	<ul style="list-style-type: none"> <li>• 18" alloy wheels</li> <li>• Adaptive LED Headlights</li> <li>• Front and rear Signature LED lights</li> <li>• Rear privacy glass</li> </ul>	<ul style="list-style-type: none"> <li>• Door mirror tilt down when reversing</li> </ul>	<ul style="list-style-type: none"> <li>• 360° View Monitor (front, rear and side cameras)</li> </ul>
INTERIOR	<ul style="list-style-type: none"> <li>• Auto-dimming rear view mirror</li> <li>• Colour 7-inch TFT instrument display</li> <li>• Electronic parking brake</li> <li>• Heated front seats</li> <li>• Premium black cloth trim</li> <li>• Windscreen projected colour Active Driving Display (Head-up display)</li> </ul>	<ul style="list-style-type: none"> <li>• Frameless auto-dimming rear view mirror</li> </ul>	<ul style="list-style-type: none"> <li>• Black leather seat trim</li> <li>• Driver seat power slide, recline, height, tilt and lumbar adjustment with head-up display and driver door mirror memory</li> <li>• Heated steering wheel</li> </ul>	
INFOTAINMENT	<ul style="list-style-type: none"> <li>• Apple CarPlay® &amp; Android Auto™</li> <li>• Connected Services^</li> <li>• Integrated Bluetooth®</li> <li>• Mazda Connect (Multimedia system) with 8.8" Colour centre display and 8 speaker AM/FM/DAB radio</li> <li>• Mazda Navigation System with 5-years free European map updates</li> </ul>		<ul style="list-style-type: none"> <li>• 12-speaker Bose surround sound system, with Bose CenterPoint, BassMatch and AudioPilot technology**</li> </ul>	
COMFORT AND CONVENIENCE	<ul style="list-style-type: none"> <li>• Dual-zone climate control air-conditioning</li> <li>• Electric windows</li> <li>• Keyless ignition</li> <li>• Mazda Radar Cruise Control (Adaptive Cruise Control)</li> </ul>	<ul style="list-style-type: none"> <li>• Drive mode selection switch with steering wheel paddle-shift controls (Automatic only)</li> <li>• Power tilt and slide sunroof (e-Skyactiv X models only)</li> </ul>		<ul style="list-style-type: none"> <li>• Cruising and Traffic Support</li> </ul>
SAFETY AND SECURITY	<ul style="list-style-type: none"> <li>• Blind Spot Monitoring with Rear Cross Traffic Alert</li> <li>• Driver Attention Alert</li> <li>• Hill Launch Assist</li> <li>• Intelligent Speed Assist</li> <li>• Lane-keep Assist System</li> <li>• Smart Brake Support – Front (Pre-crash safety system)</li> <li>• Smart keyless entry</li> <li>• Traffic Sign Recognition</li> </ul>			<ul style="list-style-type: none"> <li>• Driver Monitoring</li> <li>• Front Cross Traffic Alert</li> <li>• Smart Brake Support Rear</li> <li>• Smart Brake Support Rear Crossing</li> </ul>

\*Specification is not exhaustive. Please see [www.mazda.co.uk](http://www.mazda.co.uk) for further information or download a Price & Specification Guide.

^Connected Services is a subscription service and requires a compatible mobile device to download and sign-up to the MyMazda App. A 3-year complimentary period is included and commences from the date of first registration of the vehicle. Please contact your dealer or visit [www.mazda.co.uk/my-mazda](http://www.mazda.co.uk/my-mazda) for further information.

\*\*Not available on GT Sport Edition and GT Sport Tech Edition.

# 2022 MAZDA3 SALOON PRICING - PETROL



MAZDA3 SALOON e-SKYACTIV X MHEV	P11D VALUE	CO <sub>2</sub> EMISSIONS (G/KM) <sup>1</sup>	BIK TAX (20/40% <sup>2</sup> )	0-62MPH (SECS)
Mazda3 Saloon 186ps SE-L Lux	£26,020	114	£117/£234	8.1
Mazda3 Saloon 186ps Sport Lux	£27,420	117	£128/£256	8.1
Mazda3 Saloon 186ps GT Sport Edition	£29,020	117	£135/£271	8.1
Mazda3 Saloon 186ps GT Sport	£29,320	117	£137/£274	8.1
Mazda3 Saloon 186ps GT Sport Edition Auto	£30,520	134	£158/£315	8.5
Mazda3 Saloon 186ps GT Sport Auto	£30,820	135	£164/£329	8.5
Mazda3 Saloon 186ps GT Sport Tech Edition	£29,920	117	£140/£279	8.1
Mazda3 Saloon 186ps GT Sport Tech	£30,220	117	£141/£282	8.1

EXTERIOR COLOURS	BASIC PRICE	VAT	RRP~
Arctic White	£0	£0	£0
Deep Crystal Blue	£475.00	£95.00	£570
Machine Grey	£575.00	£115.00	£690
Soul Red Crystal	£675.00	£135.00	£810

<sup>1</sup> BIK tax figures quoted per month in 2022/23 (except Scotland).

<sup>2</sup> Figures shown are for comparability purposes; only compare CO<sub>2</sub> figures with other cars tested to the same technical procedures. These figures may not reflect real life driving results, which will depend upon a number of factors including the accessories fitted (post-registration), variations in weather, driving styles and vehicle load. All figures quoted are derived from the latest WLTP test cycle.

~Factory fitted option prices quoted are recommended retail prices and are inclusive of VAT at 20%.

Pricing and specification are subject to change. Please speak with your local dealer for latest pricing information.



# MAZDA6 SALOON

## REFINEMENT REDEFINED





## MAZDA6 SALOON

Striking to look at and brilliant to drive, the Mazda6 Saloon embraces our signature Kodo design language to make a stylish statement in any driving environment.

The Mazda6 Saloon features regenerative braking\* which converts kinetic energy into electricity as the car decelerates, helping to power the car's electrical equipment. Together with Mazda's award-winning Skyactiv technology, the Mazda6 Saloon achieves outstanding efficiency and performance with CO<sub>2</sub> emissions as low as 152g/km and combined fuel consumption of up to 42.2mpg.

\*Excludes 2.0 Skyactiv-G 145ps petrol models.





# MAZDA6 SALOON GRADE HIGHLIGHTS\*

	SE-L	SPORT	GT SPORT
EXTERIOR	<ul style="list-style-type: none"> <li>• 17" Gunmetal alloy wheels</li> <li>• Electrically-adjustable, heated, auto power folding door mirrors</li> <li>• Front &amp; rear parking sensors</li> <li>• Front rain-sensing wipers</li> <li>• LED Headlights with auto levelling</li> <li>• Rear privacy glass</li> </ul>	<ul style="list-style-type: none"> <li>• 19" Bright alloy wheels</li> <li>• Adaptive Front lighting System</li> <li>• Reversing camera</li> <li>• Signature LED daytime running lights</li> </ul>	<ul style="list-style-type: none"> <li>• 360° View Monitor (front, rear and side cameras)</li> <li>• Adaptive LED Headlights</li> <li>• Power tilt and slide sunroof</li> </ul>
INTERIOR	<ul style="list-style-type: none"> <li>• Auto-dimming rear view mirror</li> <li>• Electronic Parking Brake with auto-hold and auto-disengage function</li> <li>• Premium black cloth trim</li> <li>• Windscreen projected colour Active Driving Display (Head-up display)</li> </ul>	<ul style="list-style-type: none"> <li>• Black leather seat trim</li> <li>• Driver's seat, power slide, recline, height and lumbar adjustment with memory</li> <li>• Heated front seats</li> <li>• Heated steering wheel</li> </ul>	<ul style="list-style-type: none"> <li>• Brown Nappa leather seat trim</li> <li>• Colour 7-inch TFT instrument display</li> <li>• Frameless auto-dimming rear view mirror</li> <li>• Front seat ventilation</li> <li>• Heated outer rear seats</li> <li>• Interior white LED illumination</li> <li>• Ultrasuede NU &amp; real Japanese Sen Wood trim</li> </ul>
INFOTAINMENT	<ul style="list-style-type: none"> <li>• 8" Colour touch-screen display with Mazda Connect infotainment</li> <li>• Integrated Bluetooth®</li> <li>• Mazda Navigation System with 3-years free European map updates</li> <li>• Wireless Apple CarPlay® &amp; wired Android Auto™</li> </ul>	<ul style="list-style-type: none"> <li>• 11-Speaker Bose surround sound system, with Bose CenterPoint and AudioPilot technology</li> </ul>	
COMFORT AND CONVENIENCE	<ul style="list-style-type: none"> <li>• Dual-zone climate control air-conditioning</li> <li>• Electric windows</li> <li>• Keyless ignition (Engine start/stop button)</li> <li>• Mazda Radar Cruise Control (Adaptive Cruise Control)</li> </ul>		
SAFETY AND SECURITY	<ul style="list-style-type: none"> <li>• Advanced Smart City Brake Support (Pre-crash safety system)</li> <li>• Blind Spot Monitoring with Rear Cross Traffic Alert</li> <li>• High Beam Control</li> <li>• Hill Launch Assist</li> <li>• Intelligent Speed Assist</li> <li>• Traffic Sign Recognition</li> </ul>	<ul style="list-style-type: none"> <li>• Smart keyless entry</li> </ul>	<ul style="list-style-type: none"> <li>• Driver Attention Alert</li> <li>• Smart City Brake Support – Rear</li> </ul>

\*Specification is not exhaustive. Please see [www.mazda.co.uk](http://www.mazda.co.uk) for further information or download a Price & Specification Guide.

# MAZDA6 SALOON PRICING – PETROL



MAZDA6 SALOON SKYACTIV-G	P11D VALUE	CO <sub>2</sub> EMISSIONS (G/KM) <sup>1</sup>	BIK TAX (20/40% <sup>2</sup> )	0-62MPH (SECS)
Saloon 145ps SE-L	£25,700	152	£150/£300	9.9
Saloon 145ps SE-L Auto	£27,300	159	£164/£328	10.9
Saloon 165ps Sport	£28,500	152	£166/£333	9.4
Saloon 194ps GT Sport Auto	£33,080	167	£204/£408	8.1

EXTERIOR COLOURS	BASIC PRICE	VAT	RRP~
Arctic White	£0	£0	£0
Polymetal Grey / Deep Crystal Blue / Jet Black	£483.33	£96.67	£580
Machine Grey	£583.33	£116.67	£700
Soul Red Crystal	£683.33	£136.67	£820

<sup>1</sup> BIK tax figures quoted per month in 2022/23 (except Scotland).

<sup>2</sup> Figures shown are for comparability purposes; only compare CO<sub>2</sub> figures with other cars tested to the same technical procedures. These figures may not reflect real life driving results, which will depend upon a number of factors including the accessories fitted (post-registration), variations in weather, driving styles and vehicle load. All figures quoted are derived from the latest WLTP test cycle.

~Factory fitted option prices quoted are recommended retail prices and are inclusive of VAT at 20%.

Pricing and specification are subject to change. Please speak with your local dealer for latest pricing information.

# MAZDA6 TOURER

LUXURY AND VERSATILITY





## MAZDA6 TOURER

The Mazda6 Tourer embraces the latest Kodo design language, blending sleek looks and style with unprecedented versatility. Exterior roof rails are instant identifiers of the Tourer's practical appeal, and hint at the spacious load area that offers up to a generous 1,664 litres<sup>†</sup> of space.

The Mazda6 Tourer features regenerative braking\* which converts kinetic energy into electricity as the car decelerates, helping to power the car's electrical equipment. Together with Mazda's award-winning Skyactiv technology, the Mazda6 Tourer achieves outstanding efficiency and performance with CO<sub>2</sub> emissions as low as 155g/km and combined fuel consumption of up to 41.5mpg.

Inside, the human-centric cockpit uses the finest quality materials delivering the purest form of Jinba Ittai – a true connection between car and driver.

\*Excludes 2.0 Skyactiv-G 145ps petrol models.

†Cargo volume figure when in 2-seat mode and includes under floor storage.



# MAZDA6 TOURER GRADE HIGHLIGHTS\*

	SE-L	SPORT	GT SPORT
EXTERIOR	<ul style="list-style-type: none"> <li>• 17" Gunmetal alloy wheels</li> <li>• Body coloured electrically-adjustable, heated, auto power-folding door mirrors</li> <li>• Front &amp; rear parking sensors</li> <li>• Front rain-sensing wipers</li> <li>• LED Headlights with auto levelling</li> <li>• Rear privacy glass</li> </ul>	<ul style="list-style-type: none"> <li>• 19" Bright alloy wheels</li> <li>• Adaptive Front lighting System</li> <li>• Reversing camera</li> <li>• Signature LED daytime running lights</li> </ul>	<ul style="list-style-type: none"> <li>• 360° View Monitor (front, rear and side cameras)</li> <li>• Adaptive LED Headlights</li> <li>• Power tilt and slide sunroof</li> </ul>
INTERIOR	<ul style="list-style-type: none"> <li>• Auto-dimming rear view mirror</li> <li>• Electronic Parking Brake with auto-hold and auto-disengage function</li> <li>• Premium black cloth seat trim</li> <li>• Colour TFT instrument cluster display (provides speed, traffic signs and Mazda Radar Cruise Control information)</li> </ul>	<ul style="list-style-type: none"> <li>• Black leather seat trim</li> <li>• Driver's seat, power slide, recline and height adjustment with memory</li> <li>• Heated front seats</li> <li>• Heated steering wheel</li> </ul>	<ul style="list-style-type: none"> <li>• Brown Nappa leather seat trim</li> <li>• Colour 7-inch TFT instrument display</li> <li>• Frameless auto-dimming rear view mirror</li> <li>• Front seat ventilation</li> <li>• Heated outer rear seats</li> <li>• Black roof lining (ceiling and pillars)</li> <li>• Ultrasuede NU &amp; real Japanese Sen Wood trim</li> </ul>
INFOTAINMENT	<ul style="list-style-type: none"> <li>• Integrated Bluetooth®</li> <li>• Mazda Connect multimedia system with 8" Colour centre display and Multimedia Commander</li> <li>• Mazda Navigation System with 3-years free European map updates</li> <li>• Wireless Apple CarPlay® &amp; wired Android Auto™</li> </ul>	<ul style="list-style-type: none"> <li>• 11-Speaker Bose surround sound system, with Bose CenterPoint and AudioPilot technology</li> </ul>	
COMFORT AND CONVENIENCE	<ul style="list-style-type: none"> <li>• Dual-zone climate control air-conditioning with rear vents</li> <li>• Electric windows</li> <li>• Mazda Radar Cruise Control (Adaptive Cruise Control)</li> <li>• Windscreen projected colour Active Driving Display</li> </ul>		
SAFETY AND SECURITY	<ul style="list-style-type: none"> <li>• Advanced Smart City Brake Support (Pre-crash safety system)</li> <li>• Blind Spot Monitoring with Rear Cross Traffic Alert</li> <li>• Hill Launch Assist</li> <li>• Lane-keep Assist System with Lane Departure Warning System</li> <li>• Remote central locking with deadlocking and automatic door lock when driving</li> <li>• Traffic Sign Recognition</li> </ul>	<ul style="list-style-type: none"> <li>• Smart keyless entry</li> </ul>	<ul style="list-style-type: none"> <li>• Driver Attention Alert</li> <li>• Smart City Brake Support – Rear</li> </ul>

\*Specification is not exhaustive. Please see [www.mazda.co.uk](http://www.mazda.co.uk) for further information or download a Price & Specification Guide.

# MAZDA6 TOURER PRICING – PETROL



MAZDA6 TOURER SKYACTIV-G	P11D VALUE	CO <sub>2</sub> EMISSIONS (G/KM) <sup>1</sup>	BIK TAX (20/40% <sup>2</sup> )	0-62MPH (SECS)
Tourer 145ps SE-L	£26,700	155	£160/£320	10
Tourer 165ps Sport	£29,500	155	£177/£354	9.4
Tourer 194ps GT Sport Auto	£34,080	172	£210/£420	8.1

EXTERIOR COLOURS	BASIC PRICE	VAT	RRP~
Arctic White	£0	£0	£0
Polymetal Grey / Deep Crystal Blue / Jet Black	£483.33	£96.67	£580
Machine Grey	£583.33	£116.67	£700
Soul Red Crystal	£683.33	£136.67	£820

<sup>1</sup> BIK tax figures quoted per month in 2022/23 (except Scotland).

<sup>2</sup> Figures shown are for comparability purposes; only compare CO<sub>2</sub> figures with other cars tested to the same technical procedures. These figures may not reflect real life driving results, which will depend upon a number of factors including the accessories fitted (post-registration), variations in weather, driving styles and vehicle load. All figures quoted are derived from the latest WLTP test cycle.

~Factory fitted option prices quoted are recommended retail prices and are inclusive of VAT at 20%.

Pricing and specification are subject to change. Please speak with your local dealer for latest pricing information.



# 2022 MAZDA CX-30

FLOWING BEAUTY OF A COUPE,  
BOLD TOUGHNESS OF AN SUV



## 2022 MAZDA CX-30 MHEV

The 2022 Mazda CX-30 is a compact crossover combining the bold proportions of an SUV with elegant styling that embodies Mazda's Kodo design language.

The CX-30 features Mazda's ground-breaking e-Skyactiv X petrol engine technology, which burns less fuel than a conventional petrol engine, but makes more power. It produces fewer emissions, but provides better performance than a regular petrol engine, with CO<sub>2</sub> emissions as low as 127g/km and combined fuel consumption of up to 50.4mpg.

Mazda's Skyactiv-Vehicle Architecture underscores the CX-30's sleek shape, hinting at the streamlined silhouette of a coupé, while its dimensions deliver the sense of rugged stability you'd expect of an SUV.

As standard, the advanced 24V Mazda M Hybrid mild-hybrid system, uses kinetic energy from regenerative braking to power the electronics and assist acceleration, helping you enjoy outstanding performance with low running costs and a truly involving drive.

Mazda CX-30 is available with i-ACTIV All-Wheel Drive technology for increased traction and a reassuring sense of control every time. The system helps to maintain grip and steering accuracy by shifting vehicle weight upon turn entry and exit to achieve a smoother drive.





# 2022 MAZDA CX-30 GRADE HIGHLIGHTS

	SE-L	SE-L LUX	SPORT LUX	GT SPORT EDITION/ GT SPORT	GT SPORT TECH EDITION/ GT SPORT TECH
EXTERIOR	<ul style="list-style-type: none"> <li>• 16" Grey alloy wheels</li> <li>• Electrically-adjustable, heated, auto power folding door mirrors</li> <li>• Front rain-sensing wipers</li> <li>• LED headlights with auto levelling</li> <li>• Rear parking sensors</li> </ul>	<ul style="list-style-type: none"> <li>• Auto-dimming driver door mirror</li> <li>• Front parking sensors</li> <li>• Reversing camera</li> </ul>	<ul style="list-style-type: none"> <li>• 18" alloy wheels</li> <li>• Adaptive LED Headlights</li> <li>• Front and rear Signature LED lights</li> <li>• Power liftgate</li> <li>• Rear privacy glass</li> </ul>	<ul style="list-style-type: none"> <li>• Door mirror tilt down when reversing</li> </ul>	<ul style="list-style-type: none"> <li>• 360° View Monitor (front, rear and side cameras)</li> </ul>
INTERIOR	<ul style="list-style-type: none"> <li>• Colour 7-inch TFT instrument display</li> <li>• Electronic parking brake</li> <li>• Premium Dark Grey cloth trim</li> <li>• Windscreen projected colour Active Driving Display (Head-up display)</li> </ul>	<ul style="list-style-type: none"> <li>• Auto-dimming rear view mirror</li> <li>• Heated front seats</li> </ul>	<ul style="list-style-type: none"> <li>• Frameless auto-dimming rear view mirror</li> </ul>	<ul style="list-style-type: none"> <li>• Black leather seat trim</li> <li>• Driver seat power slide, recline, height, tilt and lumbar adjustment with head-up display and driver door mirror memory</li> <li>• Heated steering wheel</li> </ul>	
INFOTAINMENT	<ul style="list-style-type: none"> <li>• Apple CarPlay® &amp; Android Auto™</li> <li>• Connected Services^</li> <li>• Integrated Bluetooth®</li> <li>• Mazda Connect (Multimedia system) with 8.8" Colour centre display and 8 speaker AM/FM/DAB radio</li> <li>• Mazda Navigation System with 5-years free European map updates</li> </ul>			<ul style="list-style-type: none"> <li>• 12-speaker Bose surround sound system, with Bose CenterPoint, BassMatch and AudioPilot technology**</li> </ul>	
COMFORT AND CONVENIENCE	<ul style="list-style-type: none"> <li>• Air-conditioning</li> <li>• Electric windows</li> <li>• Keyless ignition</li> <li>• Mazda Radar Cruise Control (Adaptive Cruise Control)</li> </ul>	<ul style="list-style-type: none"> <li>• Dual-zone climate control air-conditioning</li> </ul>	<ul style="list-style-type: none"> <li>• Drive mode selection switch with steering wheel paddle-shift controls (Automatic only)</li> <li>• Power tilt and slide sunroof (e-Skyactiv X models only)</li> </ul>		<ul style="list-style-type: none"> <li>• Cruising and Traffic Support</li> </ul>
SAFETY AND SECURITY	<ul style="list-style-type: none"> <li>• Blind Spot Monitoring with Rear Cross Traffic Alert</li> <li>• Driver Attention Alert</li> <li>• Hill Launch Assist</li> <li>• Intelligent Speed Assist</li> <li>• Lane-keep Assist System</li> <li>• Smart Brake Support – Front (Pre-crash safety system)</li> <li>• Traffic Sign Recognition</li> </ul>	<ul style="list-style-type: none"> <li>• Smart keyless entry</li> </ul>			<ul style="list-style-type: none"> <li>• Driver Monitoring</li> <li>• Front Cross Traffic Alert</li> <li>• Smart Brake Support Rear</li> <li>• Smart Brake Support Rear Crossing</li> </ul>

\*Specification is not exhaustive. Please see [www.mazda.co.uk](http://www.mazda.co.uk) for further information or download a Price & Specification Guide.

^Connected Services is a subscription service and requires a compatible mobile device to download and sign-up to the MyMazda App. A 3-year complimentary period is included and commences from the date of first registration of the vehicle. Please contact your dealer or visit [www.mazda.co.uk/my-mazda](http://www.mazda.co.uk/my-mazda) for further information.

\*\*Not available on GT Sport Edition and GT Sport Tech Edition.



# 2022 MAZDA CX-30 PRICING – PETROL 2WD



MAZDA CX-30 e-SKYACTIV G MHEV 2WD	P11D VALUE	CO <sub>2</sub> EMISSIONS (G/KM) <sup>1</sup>	BIK TAX (20/40% <sup>2</sup> )	0-62MPH (SECS)
122ps 2WD SE-L	£24,360	134	£126/£252	10.6
122ps 2WD SE-L Lux	£25,860	134	£134/£267	10.6
122ps 2WD SE-L Lux Auto	£27,360	143	£150/£301	11.2
122ps 2WD Sport Lux	£26,960	134	£139/£279	10.6
122ps 2WD Sport Lux Auto	£28,460	144	£157/£313	11.2
122ps 2WD GT Sport Edition	£28,570	134	£148/£295	10.6
122ps 2WD GT Sport	£28,870	134	£149/£298	10.6
122ps 2WD GT Sport Edition Auto	£30,070	144	£165/£331	11.2
122ps 2WD GT Sport Auto	£30,370	144	£167/£334	11.2
122ps 2WD GT Sport Tech Edition	£29,470	134	£152/£305	10.6
122ps 2WD GT Sport Tech	£29,770	134	£154/£308	10.6
122ps 2WD GT Sport Tech Edition Auto	£30,970	144	£170/£341	11.2
122ps 2WD GT Sport Tech Auto	£31,270	144	£172/£344	11.2

EXTERIOR COLOURS	BASIC PRICE	VAT	RRP~
Arctic White	£0	£0	£0
Snowflake White / Platinum Quartz / Sonic Silver / Polymetal Grey / Deep Crystal Blue / Jet Black	£475.00	£95.00	£570
Machine Grey	£575.00	£115.00	£690
Soul Red Crystal	£675.00	£135.00	£810

<sup>1</sup> BIK tax figures quoted per month in 2022/23 (except Scotland).

<sup>2</sup> Figures shown are for comparability purposes; only compare CO<sub>2</sub> figures with other cars tested to the same technical procedures. These figures may not reflect real life driving results, which will depend upon a number of factors including the accessories fitted (post-registration), variations in weather, driving styles and vehicle load. All figures quoted are derived from the latest WLTP test cycle.

~Factory fitted option prices quoted are recommended retail prices and are inclusive of VAT at 20%.

Pricing and specification are subject to change. Please speak with your local dealer for latest pricing information.

# 2022 MAZDA CX-30 PRICING – PETROL 2WD



MAZDA CX-30 e-SKYACTIV X MHEV 2WD	P11D VALUE	CO <sub>2</sub> EMISSIONS (G/KM) <sup>1</sup>	BIK TAX (20/40% <sup>2</sup> )	0-62MPH (SECS)
186ps 2WD SE-L Lux	£27,760	127	£139/£278	8.3
186ps 2WD SE-L Lux Auto	£29,260	137	£156/£312	8.6
186ps 2WD Sport Lux	£29,260	128	£146/£293	8.3
186ps 2WD Sport Lux Auto	£30,760	138	£164/£328	8.7
186ps 2WD GT Sport Edition	£30,870	128	£154/£309	8.3
186ps 2WD GT Sport	£31,170	128	£156/£312	8.3
186ps 2WD GT Sport Edition Auto	£32,370	138	£173/£345	8.7
186ps 2WD GT Sport Auto	£32,670	138	£174/£348	8.7
186ps 2WD GT Sport Tech Edition	£31,770	128	£159/£318	8.3
186ps 2WD GT Sport Tech	£32,070	128	£160/£321	8.3
186ps 2WD GT Sport Tech Edition Auto	£33,270	138	£177/£355	8.7
186ps 2WD GT Sport Tech Auto	£33,570	138	£179/£358	8.7

FACTORY FITTED OPTIONS	BASIC PRICE	VAT	RRP~
Stone leather trim with Rich Brown Interior Accents*	£166.67	£33.33	£200

EXTERIOR COLOURS	BASIC PRICE	VAT	RRP~
Arctic White	£0	£0	£0
Snowflake White / Platinum Quartz / Sonic Silver / Polymetal Grey / Deep Crystal Blue / Jet Black	£475.00	£95.00	£570
Machine Grey	£575.00	£115.00	£690
Soul Red Crystal	£675.00	£135.00	£810

<sup>1</sup> BIK tax figures quoted per month in 2022/23 (except Scotland).

<sup>2</sup> Figures shown are for comparability purposes; only compare CO<sub>2</sub> figures with other cars tested to the same technical procedures. These figures may not reflect real life driving results, which will depend upon a number of factors including the accessories fitted (post-registration), variations in weather, driving styles and vehicle load. All figures quoted are derived from the latest WLTP test cycle.

\* e-Skyactiv X GT Sport Tech models only.

~Factory fitted option prices quoted are recommended retail prices and are inclusive of VAT at 20%.

Pricing and specification are subject to change. Please speak with your local dealer for latest pricing information.

# 2022 MAZDA CX-30 PRICING – PETROL AWD



MAZDA CX-30 e-SKYACTIV X MHEV AWD	P11D VALUE	CO <sub>2</sub> EMISSIONS (G/KM) <sup>1</sup>	BIK TAX (20/40% <sup>2</sup> )	0-62MPH (SECS)
186ps AWD GT Sport Edition	£33,070	137	£176/£353	8.8
186ps AWD GT Sport	£33,370	137	£178/£356	8.8
186ps AWD GT Sport Edition Auto	£34,570	149	£196/£392	9.0
186ps AWD GT Sport Auto	£34,870	149	£198/£395	9.0
186ps AWD GT Sport Tech Edition	£33,970	137	£181/£362	8.8
186ps AWD GT Sport Tech	£34,270	137	£183/£366	8.8
186ps AWD GT Sport Tech Edition Auto	£35,470	149	£201/£402	9.0
186ps AWD GT Sport Tech Auto	£35,770	149	£203/£405	9.0

FACTORY FITTED OPTIONS	BASIC PRICE	VAT	RRP~
Stone leather trim with Rich Brown Interior Accents*	£166.67	£33.33	£200

EXTERIOR COLOURS	BASIC PRICE	VAT	RRP~
Arctic White	£0	£0	£0
Snowflake White / Platinum Quartz / Sonic Silver / Polymetal Grey / Deep Crystal Blue / Jet Black	£475.00	£95.00	£570
Machine Grey	£575.00	£115.00	£690
Soul Red Crystal	£675.00	£135.00	£810

<sup>1</sup> BIK tax figures quoted per month in 2022/23 (except Scotland).

<sup>2</sup> Figures shown are for comparability purposes; only compare CO<sub>2</sub> figures with other cars tested to the same technical procedures. These figures may not reflect real life driving results, which will depend upon a number of factors including the accessories fitted (post-registration), variations in weather, driving styles and vehicle load. All figures quoted are derived from the latest WLTP test cycle.

\* Available on e-Skyactiv X GT Sport Tech Edition & GT Sport Tech models only.

~Factory fitted option prices quoted are recommended retail prices and are inclusive of VAT at 20%.

Pricing and specification are subject to change. Please speak with your local dealer for latest pricing information.



# 2022 MAZDA CX-5

REFINEMENT REDEFINED



## 2022 MAZDA CX-5

Conceived and built to celebrate driving with superior agility and responsiveness, the Mazda CX-5 represents a stunning evolution of our celebrated Kodo design language.

Mazda Skyactiv Technology optimises driving dynamics and fuel consumption, with CO<sub>2</sub> emissions as low as 147g/km and combined fuel consumption of up to 50.4mpg, while the spacious interior means everyone enjoys business-class comfort and superb craftsmanship.

Bold exterior design hints at an effortless and engaging driving experience. Responsive and efficient wherever you drive it, the Mazda CX-5 delivers outstanding environmental and safety performance without compromising driving pleasure.



2022 MAZDA CX-5 GRADE HIGHLIGHTS\*

	SE-L	NEWGROUND	SPORT EDITION / SPORT	SPORT BLACK EDITION / SPORT BLACK	GT SPORT
EXTERIOR	<ul style="list-style-type: none"><li>• 17" Silver alloy wheels</li><li>• Adaptive Front lighting System</li><li>• Electrically-adjustable, heated, auto power folding door mirrors</li><li>• Front rain-sensing wipers</li><li>• LED headlights with auto headlight levelling</li><li>• Front &amp; rear parking sensors</li><li>• Rear privacy glass</li></ul>	<ul style="list-style-type: none"><li>• 19" Black Diamond Cut alloy wheels</li><li>• Black mirror caps</li><li>• Lime-Green front grille accent colour</li><li>• Silver front and rear under guard &amp; side skirts</li></ul>	<ul style="list-style-type: none"><li>• 19" Black Diamond cut alloy wheels</li><li>• Signature LED daytime running lights</li><li>• Power tilt and slide sunroof (not available on 150ps Diesel models)</li><li>• Reversing camera</li></ul>	<ul style="list-style-type: none"><li>• 19" Black alloy wheels</li><li>• Gloss Black front and rear lower bumper mouldings</li><li>• Gloss Black painted wheel arch and side mouldings</li><li>• Gloss Black Signature wing</li><li>• Gloss Black door mirrors</li><li>• Power tilt and slide sunroof</li><li>• Red front grille accent colour</li></ul>	<ul style="list-style-type: none"><li>• 19" Bright alloy wheels</li><li>• 360° View Monitor (front, rear and side cameras)</li><li>• Adaptive LED Headlights</li><li>• Power liftgate</li><li>• Power tilt and slide sunroof</li><li>• Body coloured front and rear lower bumper mouldings</li><li>• Body coloured wheel arch and side mouldings</li><li>• Gloss Black front grille accent colour</li></ul>
INTERIOR	<ul style="list-style-type: none"><li>• 40:20:40 split fold rear seats</li><li>• Auto-dimming rear view mirror</li><li>• Electronic parking brake</li><li>• Premium black cloth trim</li></ul>	<ul style="list-style-type: none"><li>• 6-way power adjustable driver seat</li><li>• Black half leatherette seats with Lime-Green stitching and Black suede inserts</li><li>• Heated front seats</li><li>• Leatherette door trim</li><li>• Lime-Green louver bezel inner accent</li><li>• Reversible waterproof cargo board</li></ul>	<ul style="list-style-type: none"><li>• 8-way power adjustable driver's seat with memory linked to head-up display and drivers door mirror</li><li>• Black leather seat trim</li><li>• Heated front seats</li><li>• Heated steering wheel</li><li>• Windscreen projected colour Active Driving Display (Head-up display)</li></ul>	<ul style="list-style-type: none"><li>• Black roof lining</li><li>• Black leather with Red stitching</li><li>• Black honeycomb interior decoration panel</li><li>• Black honeycomb interior door trim decoration panel</li><li>• Red stitching and accents on door trim, knee pad, console lid, steering wheel &amp; gear shift boot</li></ul>	<ul style="list-style-type: none"><li>• Brown Nappa leather seat trim</li><li>• Frameless auto-dimming rear view mirror</li><li>• Front seat ventilation</li><li>• Heated outer rear seats</li><li>• Wood interior trim with Black roof lining</li></ul>
INFOTAINMENT	<ul style="list-style-type: none"><li>• Apple CarPlay® &amp; Android Auto™</li><li>• Connected services^</li><li>• Integrated Bluetooth®</li><li>• Mazda Connect (Multimedia system) with 10.25" colour centre display and 6 speaker AM/FM/DAB radio</li><li>• Mazda Navigation System with 5-years free European map updates</li></ul>		In addition Sport adds: <ul style="list-style-type: none"><li>• 10-Speaker Bose surround sound system, with Bose CenterPoint and AudioPilot technology**</li><li>• Wireless phone charging**</li></ul>	In addition Sport Black adds: <ul style="list-style-type: none"><li>• 10-Speaker Bose surround sound system, with Bose CenterPoint and AudioPilot technology**</li><li>• Wireless phone charging**</li></ul>	
COMFORT AND CONVENIENCE	<ul style="list-style-type: none"><li>• Dual-zone climate control air-conditioning</li><li>• Electric windows</li><li>• Keyless ignition (Engine start/stop button)</li><li>• Mazda Radar Cruise Control (Adaptive Cruise Control)</li></ul>		<ul style="list-style-type: none"><li>• Front windscreen wiper de-icer</li></ul>		
SAFETY AND SECURITY	<ul style="list-style-type: none"><li>• Advanced Smart City Brake Support (Pre-crash safety system)</li><li>• Blind Spot Monitoring with Rear Cross Traffic Alert***</li><li>• Cruising &amp; Traffic Support</li><li>• High Beam Control</li><li>• Hill Launch Assist</li></ul>		<ul style="list-style-type: none"><li>• Smart keyless entry</li><li>• Traffic Sign Recognition</li></ul>		<ul style="list-style-type: none"><li>• Driver Attention Alert</li><li>• Rear Smart City Brake Support (Pre-crash safety system)</li><li>• Off-Road mode (194ps model only)</li></ul>

\*Specification is not exhaustive. Please see [www.mazda.co.uk](http://www.mazda.co.uk) for further information or download a Price & Specification Guide.

^Connected Services is a subscription service and requires a compatible mobile device to download and sign-up to the MyMazda App. A 3-year complimentary period is included and commences from the date of first registration of the vehicle. Please contact your dealer or visit [www.mazda.co.uk/my-mazda](http://www.mazda.co.uk/my-mazda) for further information.

\*\*Not available on Sport Edition and Sport Black Edition models.

\*\*\*Not available on 165ps SE-L, 165ps Newground, 165ps Sport Edition, & 165ps Sport Black Edition models.



# 2022 MAZDA CX-5 PRICING - PETROL 2WD



MAZDA CX-5 SKYACTIV-G 2WD	P11D VALUE	CO <sub>2</sub> EMISSIONS (G/KM) <sup>1</sup>	BIK TAX (20/40% <sup>2</sup> )	0-62MPH (SECS)
165ps 2WD SE-L	£28,495	154	£166/£332	10.5
165ps 2WD SE-L Auto	£30,095	164	£186/£371	9.9
165ps 2WD Newground <sup>^</sup>	£29,495	153	£172/£344	10.5
165ps 2WD Newground Auto <sup>^</sup>	£31,095	165	£192/£384	9.9
165ps 2WD Sport Edition	£30,940	153	£180/£361	10.5
165ps 2WD Sport	£31,530	153	£184/£368	10.5
165ps 2WD Sport Edition Auto	£32,540	166	£201/£401	9.9
165ps 2WD Sport Auto	£33,130	166	£204/£409	9.9
165ps 2WD Sport Black Edition	£32,940	153	£192/£384	10.5
165ps 2WD Sport Black	£33,530	153	£196/£391	10.5
165ps 2WD Sport Black Edition Auto	£34,540	166	£213/£426	9.9
165ps 2WD Sport Black Auto	£35,130	166	£217/£433	9.9
165ps 2WD GT Sport	£34,105	153	£199/£398	10.5
165ps 2WD GT Sport Auto	£35,705	166	£220/£440	9.9

FACTORY FITTED OPTIONS	BASIC PRICE	VAT	RRP~
Safety Pack - Includes Adaptive LED Headlamps, Driver Attention Alert, Rear Smart City Brake Support & 360° View Monitor <sup>**</sup>	£666.67	£133.33	£800
Stone Leather trim <sup>*</sup>	£166.67	£33.33	£200

EXTERIOR COLOURS	BASIC PRICE	VAT	RRP~
Arctic White <sup>^</sup>	£0	£0	£0
Snowflake White / Zircon Sand <sup>^</sup> / Polymetal Grey <sup>^</sup> / Eternal Blue / Deep Crystal Blue <sup>^</sup> / Jet Black	£483.33	£96.67	£580
Machine Grey <sup>^</sup>	£583.33	£116.67	£700
Soul Red Crystal	£683.33	£136.67	£820

<sup>1</sup> BIK tax figures quoted per month in 2022/23 (except Scotland). <sup>2</sup> Figures shown are for comparability purposes; only compare CO<sub>2</sub> figures with other cars tested to the same technical procedures. These figures may not reflect real life driving results, which will depend upon a number of factors including the accessories fitted (post-registration), variations in weather, driving styles and vehicle load. All figures quoted are derived from the latest WLTP test cycle.

<sup>^</sup>Newground only available in Arctic White, Zircon Sand, Polymetal Grey, Deep Crystal Blue or Machine Grey paint. <sup>\*</sup>Only available in combination with Safety Pack on Petrol 165ps 2WD Sport models. <sup>\*\*</sup>Only available on Sport models excluding 150ps Diesel models.

~Factory fitted option prices quoted are recommended retail prices and are inclusive of VAT at 20%.

Pricing and specification are subject to change. Please speak with your local dealer for latest pricing information.

# 2022 MAZDA CX-5 PRICING - DIESEL 2WD



MAZDA CX-5 SKYACTIV-D 2WD	P11D VALUE	CO <sub>2</sub> EMISSIONS (G/KM) <sup>1</sup>	BIK TAX (20/40% <sup>2</sup> )	0-62MPH (SECS)
150ps 2WD SE-L	£30,405	147	£172/£345	9.9
150ps 2WD SE-L Auto	£32,005	160	£197/£395	10.7
150ps 2WD Sport Edition	£32,350	147	£183/£367	9.9
150ps 2WD Sport	£32,830	147	£186/£372	9.9
150ps 2WD Sport Edition Auto	£33,950	160	£209/£419	10.7
150ps 2WD Sport Auto	£34,430	160	£212/£425	10.7
184ps 2WD Sport Edition	£33,250	147	£188/£377	9.2
184ps 2WD Sport	£33,730	147	£191/£382	9.2
184ps 2WD Sport Edition Auto	£34,850	160	£215/£430	9.3
184ps 2WD Sport Auto	£35,330	160	£218/£436	9.3

FACTORY FITTED OPTIONS	BASIC PRICE	VAT	RRP~
Safety Pack - Includes Adaptive LED Headlamps, Driver Attention Alert, Rear Smart City Brake Support & 360° View Monitor)**	£666.67	£133.33	£800

EXTERIOR COLOURS	BASIC PRICE	VAT	RRP~
Arctic White	£0	£0	£0
Snowflake White / Zircon Sand / Polymetal Grey / Eternal Blue / Deep Crystal Blue / Jet Black	£483.33	£96.67	£580
Machine Grey	£583.33	£116.67	£700
Soul Red Crystal	£683.33	£136.67	£820

<sup>1</sup> BIK tax figures quoted per month in 2022/23 (except Scotland).

<sup>2</sup> Figures shown are for comparability purposes; only compare CO<sub>2</sub> figures with other cars tested to the same technical procedures. These figures may not reflect real life driving results, which will depend upon a number of factors including the accessories fitted (post-registration), variations in weather, driving styles and vehicle load. All figures quoted are derived from the latest WLTP test cycle.

\*\*Only available on Sport models excluding 150ps Diesel models.

~Factory fitted option prices quoted are recommended retail prices and are inclusive of VAT at 20%.

Pricing and specification are subject to change. Please speak with your local dealer for latest pricing information.

# 2022 MAZDA CX-5 PRICING – PETROL & DIESEL AWD



MAZDA CX-5 SKYACTIV-G AWD	P11D VALUE	CO <sub>2</sub> EMISSIONS (G/KM) <sup>1</sup>	BIK TAX (20/40% <sup>2</sup> )	0-62MPH (SECS)
194ps AWD GT Sport Auto	£37,905	182	£234/£467	9.3

MAZDA CX-5 SKYACTIV-D AWD	P11D VALUE	CO <sub>2</sub> EMISSIONS (G/KM) <sup>1</sup>	BIK TAX (20/40% <sup>2</sup> )	0-62MPH (SECS)
184ps AWD Sport Edition Auto Diesel	£36,450	173	£225/£450	9.6
184ps AWD Sport Auto Diesel	£36,930	173	£228/£455	9.6
184ps AWD GT Sport Diesel	£37,905	165	£234/£467	9.3
184ps AWD GT Sport Auto Diesel	£39,505	173	£244/£487	9.6

FACTORY FITTED OPTIONS	BASIC PRICE	VAT	RRP~
Safety Pack - Includes Adaptive LED Headlamps, Driver Attention Alert, Rear Smart City Brake Support & 360° View Monitor)**	£666.67	£133.33	£800

EXTERIOR COLOURS	BASIC PRICE	VAT	RRP~
Arctic White	£0	£0	£0
Snowflake White / Zircon Sand / Polymetal Grey / Eternal Blue / Deep Crystal Blue / Jet Black	£483.33	£96.67	£580
Machine Grey	£583.33	£116.67	£700
Soul Red Crystal	£683.33	£136.67	£820

<sup>1</sup> BIK tax figures quoted per month in 2022/23 (except Scotland).

<sup>2</sup> Figures shown are for comparability purposes; only compare CO<sub>2</sub> figures with other cars tested to the same technical procedures. These figures may not reflect real life driving results, which will depend upon a number of factors including the accessories fitted (post-registration), variations in weather, driving styles and vehicle load. All figures quoted are derived from the latest WLTP test cycle.

\*\*Only available on Sport models excluding 150ps Diesel models.

~Factory fitted option prices quoted are recommended retail prices and are inclusive of VAT at 20%.

Pricing and specification are subject to change. Please speak with your local dealer for latest pricing information.



# ALL-NEW MAZDA CX-60

CRAFTED IN JAPAN





## ALL-NEW MAZDA CX-60

Mazda CX-60 is Mazda's first Plug-in Hybrid, featuring a powerful 2.5 litre petrol engine mated to an electric motor and battery, which delivers impressive driving performance.

Mazda CX-60's Plug-in Hybrid system fits seamlessly into your life with the ability to drive in EV only power for a range of up to 39 miles, CO<sub>2</sub> emissions as low as 33g/km and fuel consumption of up to 188.3mpg, it makes the Mazda CX-60 an ideal addition to your fleet.



# ALL-NEW MAZDA CX-60 GRADE HIGHLIGHTS\*

	EXCLUSIVE LINE	HOMURA	TAKUMI
EXTERIOR	<ul style="list-style-type: none"> <li>• 18" Grey Metallic alloy wheels</li> <li>• Dusk-sensing headlights</li> <li>• Electrically-adjustable, heated auto power-folding door mirrors</li> <li>• Front and rear parking sensors</li> <li>• LED headlights with auto levelling</li> <li>• Reversing camera</li> <li>• Power liftgate with hands free function</li> </ul>	<ul style="list-style-type: none"> <li>• 20" Black Metallic alloy wheels</li> <li>• Body coloured wheel arch mouldings</li> <li>• Dark plated Signature wing</li> <li>• Electrically-adjustable, heated auto power-folding door mirrors with memory</li> <li>• Gloss black honeycomb radiator grille</li> <li>• Gloss black wing mirrors</li> </ul>	<ul style="list-style-type: none"> <li>• 20" Black Metallic Machined Alloys</li> <li>• Body coloured wing mirrors</li> <li>• Chrome plated Signature wing</li> <li>• Gloss black bar type radiator grille</li> <li>• Side window chrome surround</li> </ul>
INTERIOR	<ul style="list-style-type: none"> <li>• 40:20:40 split fold down rear seats with remote folding</li> <li>• Black leather seat trim<sup>^</sup></li> <li>• Frameless auto-dimming rear-view mirror</li> <li>• Front and rear electric windows with one-touch auto up/down</li> <li>• Instrument panel 12.3" TFT Colour driver display</li> <li>• Windscreen projected colour Active Driving Display</li> </ul>	<ul style="list-style-type: none"> <li>• Ambient lighting</li> <li>• Front seat ventilation (3-stage setting)</li> <li>• Heated outer rear seats</li> <li>• Mazda Driver Personalisation System: (seat / head up display / wing mirrors / steering wheel)</li> <li>• Ingress / Egress support &amp; automatic driver position guide</li> </ul>	<ul style="list-style-type: none"> <li>• Bright decoration panel</li> <li>• Cloth detailed stitching dashboard panel</li> <li>• White Nappa leather seat trim<sup>^</sup></li> <li>• White maple wood console panel</li> </ul>
INFOTAINMENT	<ul style="list-style-type: none"> <li>• 12.3" Colour entertainment display with Mazda Connect infotainment</li> <li>• AM / FM / DAB radio with 8 speakers</li> <li>• Integrated Bluetooth®</li> <li>• USB inputs (x2 front, x2 rear) &amp; 12V outlet (x1 front, x1 boot)</li> <li>• Wireless Apple CarPlay® and Android Auto™ with touch-screen function</li> </ul>	<ul style="list-style-type: none"> <li>• 12 Bose speaker surround-sound system featuring Bose Centerpoint signal processing and AudioPilot 2 noise compensations technology</li> </ul>	
COMFORT AND CONVENIENCE	<ul style="list-style-type: none"> <li>• Cruise control with adjustable speed limiter</li> <li>• Dual-zone climate control air-conditioning with rear air vents</li> <li>• Front wiper de-icer</li> <li>• Heated front seats</li> <li>• Heated steering wheel</li> <li>• Smart keyless entry</li> </ul>		
SAFETY AND SECURITY	<ul style="list-style-type: none"> <li>• Blind Spot Monitoring with Rear Cross Traffic Alert</li> <li>• Driver Attention Alert</li> <li>• Intelligent Speed Assist</li> <li>• Lane-keep Assist System with Lane Departure Warning System</li> <li>• Smart Brake Support Front</li> </ul>	<ul style="list-style-type: none"> <li>• Driver Monitoring with personal identification</li> </ul>	

<sup>^</sup>Leather refers to centre seat facing and side supports.

\*Specification is not exhaustive. Please see [www.mazda.co.uk](http://www.mazda.co.uk) for further information or download a Price & Specification Guide.



# ALL-NEW MAZDA CX-60 PRICING – PETROL AWD



MAZDA CX-60 E-SKYACTIV PHEV	P11D VALUE	CO <sub>2</sub> EMISSIONS (G/KM) <sup>1</sup>	BIK TAX (20/40% <sup>2</sup> )	0-62MPH (SECS)
327ps AWD Exclusive-Line Auto	£45,365	33	£91/£181	5.8
327ps AWD Homura Auto	£48,115	33	£96/£192	5.8
327ps AWD Takumi Auto	£49,465	33	£99/£198	5.8

EXTERIOR COLOURS	BASIC PRICE	VAT	RRP~
Arctic White	£0	£0	£0
Sonic Silver / Deep Crystal Blue / Jet Black / Platinum Quartz	£541.67	£108.33	£650
Rhodium White / Machine Grey	£625.00	£125.00	£750
Soul Red Crystal	£750.00	£150.00	£900

<sup>1</sup> BIK tax figures quoted per month in 2022/23 (except Scotland).

<sup>2</sup> Figures shown are for comparability purposes; only compare CO<sub>2</sub> figures with other cars tested to the same technical procedures. These figures may not reflect real life driving results, which will depend upon a number of factors including the accessories fitted (post-registration), variations in weather, driving styles and vehicle load. All figures quoted are derived from the latest WLTP test cycle.

~Factory fitted option prices quoted are recommended retail prices and are inclusive of VAT at 20%.

Figures are subject to final homologation.

Pricing and specification are subject to change. Please speak with your local dealer for latest pricing information.

# ALL-NEW MAZDA CX-60 PRICING – PETROL AWD



FACTORY FITTED OPTIONS		BASIC PRICE	VAT	RRP~
<b>Comfort Pack*:</b>				
<ul style="list-style-type: none"> <li>• 20" Silver Metallic alloy wheels</li> <li>• Driver Monitoring</li> <li>• Driver seat electric tilt, slide, recline, height and lumbar adjustment</li> <li>• Front seat ventilation</li> </ul>	<ul style="list-style-type: none"> <li>• Passenger seat electric slide, recline, height and lumbar adjustment</li> <li>• Mazda Driver Personalisation System: (seat / head up display / wing mirrors)</li> </ul>	£1,166.67	£233.33	£1,400
<b>Convenience Pack:</b>				
<ul style="list-style-type: none"> <li>• 150W AC socket</li> <li>• 1500W AC socket</li> <li>• 360° View Monitor with see through view</li> <li>• Front and rear courtesy lamp and rear door pocket lamp</li> </ul>	<ul style="list-style-type: none"> <li>• Privacy glass (Rear side and rear windows)</li> <li>• Rear console box light</li> <li>• Wireless Charging</li> </ul>	£833.33	£166.67	£1,000
<b>Driver Assistance Pack:</b>				
<ul style="list-style-type: none"> <li>• Adaptive LED Headlights</li> <li>• Front Cross Traffic Alert</li> <li>• i-Adaptive Cruise Control</li> <li>• Mazda Radar Cruise Control with Cruising Traffic Support</li> </ul>	<ul style="list-style-type: none"> <li>• Smart Brake Support - Rear</li> <li>• Smart Brake Support - Rear Crossing</li> </ul>	£916.67	£183.33	£1,100
<b>Panoramic sunroof**</b>		£833.33	£166.67	£1,000

\*Optional on Exclusive-Line models only.

\*\*Optional on Homura or Takumi models only.

~Factory fitted option prices quoted are recommended retail prices and are inclusive of VAT at 20%.



# MAZDA MX-30

ALL ELECTRIC. ALL MAZDA

ELECTRIC VINYL

open

YIELD  
RIGHT  
OF  
WAY





## INTRODUCING MAZDA'S FIRST EVER ALL-ELECTRIC VEHICLE

The Mazda MX-30 is an electric car designed for complete driving pleasure, with a right-sized battery that easily meets your daily needs, along with enhanced safety.

Mazda's new e-Skyactiv drive technology, combines a lightweight battery with an electric motor for zero emissions. BIK is only 2%\* and a cleaner, more refined drive is the perfect choice for your new company car.

The Mazda MX-30 is the first Mazda to achieve an overall five-star rating under the new, more stringent 2020 Euro NCAP crashworthiness ratings, and has also been named Favourite Electric Car in the 2021 DrivingElectric.com Awards.

\*Tax year 2022/23.



# MAZDA MX-30 GRADE HIGHLIGHTS\*

	PRIME-LINE	EXCLUSIVE-LINE	MAKOTO
EXTERIOR	<ul style="list-style-type: none"> <li>• 18" Silver alloy wheels</li> <li>• Black electrically-adjustable, heated, auto power folding door mirrors</li> <li>• Front rain-sensing wipers</li> <li>• LED headlights with auto levelling</li> <li>• Front and rear parking sensors</li> <li>• Reversing camera</li> </ul>	<ul style="list-style-type: none"> <li>• 18" Bright alloy wheels</li> <li>• Auto-dimming driver door mirror with adjustable memory linked to head-up display and driver seat</li> <li>• Privacy glass (rear side and rear windows)</li> </ul>	<ul style="list-style-type: none"> <li>• 360° View Monitor (front, rear and side cameras)</li> <li>• Front windscreen wiper de-icer</li> <li>• Power tilt and slide sunroof</li> </ul>
INTERIOR	<ul style="list-style-type: none"> <li>• 7-inch colour touch-screen for climate control settings</li> <li>• Electronic parking brake</li> <li>• Windscreen projected colour Active Driving Display (Head-up display)</li> </ul>	<ul style="list-style-type: none"> <li>• Driver seat power slide, recline, height, tilt and lumbar adjustment with head-up display and driver door mirror memory</li> <li>• Frameless auto-dimming rear view mirror</li> <li>• Heated front seats</li> </ul>	<ul style="list-style-type: none"> <li>• 150W standard UK 3-pin plug socket: Can be used to power electrical devices</li> <li>• Heated steering wheel</li> </ul>
INFOTAINMENT	<ul style="list-style-type: none"> <li>• Apple CarPlay® &amp; Android Auto™</li> <li>• Connected services^</li> <li>• Integrated Bluetooth®</li> <li>• Mazda Connect (Multimedia system) with 8.8" TFT Colour centre display and 8 speaker FM/DAB radio</li> <li>• Mazda Navigation System with 5-years free European map updates</li> </ul>		<ul style="list-style-type: none"> <li>• 12-Speaker Bose surround sound system, with Bose CenterPoint, BassMatch and AudioPilot technology.</li> </ul>
COMFORT AND CONVENIENCE	<ul style="list-style-type: none"> <li>• Climate control air-conditioning</li> <li>• Front electric windows</li> <li>• Keyless ignition (Power start/stop button)</li> <li>• Mazda Radar Cruise Control (Adaptive Cruise Control)</li> </ul>		<ul style="list-style-type: none"> <li>• Cruising and Traffic Support</li> </ul>
SAFETY AND SECURITY	<ul style="list-style-type: none"> <li>• Blind Spot Monitoring with Rear Cross Traffic Alert</li> <li>• Driver Attention Alert</li> <li>• Hill Launch Assist</li> <li>• Intelligent Speed Assist</li> <li>• Smart Brake Support (Pre-crash safety system)</li> <li>• Traffic Sign Recognition</li> </ul>	<ul style="list-style-type: none"> <li>• Smart keyless entry</li> </ul>	<ul style="list-style-type: none"> <li>• Driver Monitoring</li> <li>• Front Cross Traffic Alert</li> <li>• Smart Brake Support - Rear (Pre-crash safety system)</li> <li>• Smart Brake Support - Rear Crossing (Pre-crash safety system)</li> </ul>

\*Specification is not exhaustive. Please see [www.mazda.co.uk](http://www.mazda.co.uk) for further information or download a Price & Specification Guide.

^Connected Services is a subscription service and requires a compatible mobile device to download and sign-up to the MyMazda App. A 3-year complimentary period is included and commences from the date of first registration of the vehicle. Please contact your dealer or visit [www.mazda.co.uk/my-mazda](http://www.mazda.co.uk/my-mazda) for further information.

# MAZDA MX-30 PRICING – ELECTRIC



MAZDA MX-30 E-SKYACTIV EV	P11D VALUE	CO <sub>2</sub> EMISSIONS (G/KM) <sup>1</sup>	BIK TAX (20/40% <sup>2</sup> )	0-62MPH (SECS)
145ps PRIME-LINE Auto	£29,995	0	£10/£20	9.7
145ps EXCLUSIVE-LINE Auto	£31,895	0	£11/£21	9.7
145ps MAKOTO Auto	£34,295	0	£11/£23	9.7

FACTORY FITTED OPTIONS	BASIC PRICE	VAT	RRP~
Dark Grey cloth with Brown Leatherette*	£166.67	£33.33	£200
Dark Grey cloth with Black Leatherette*	£166.67	£33.33	£200

EXTERIOR COLOURS	BASIC PRICE	VAT	RRP~
Arctic White	£0	£0	£0
Polymetal Grey / Ceramic / Jet Black	£458.33	£91.67	£550
Machine Grey	£558.33	£111.67	£670
Ceramic with Dark Grey Side Panels and Black Roof <sup>^</sup>	£1,250.00	£250.00	£1,500
Jet Black with Silver Side Panels <sup>^</sup>	£1,250.00	£250.00	£1,500
Zircon Sand with Black Side Panels and Roof <sup>^</sup>	£1,250.00	£250.00	£1,500
Soul Red Crystal with Black Side Panels and Roof <sup>^</sup>	£1,500.00	£300.00	£1,800

<sup>1</sup> BIK tax figures quoted per month in 2022/23 (except Scotland).

<sup>2</sup> Figures shown are for comparability purposes; only compare CO<sub>2</sub> figures with other cars tested to the same technical procedures. These figures may not reflect real life driving results, which will depend upon a number of factors including the accessories fitted (post-registration), variations in weather, driving styles and vehicle load. All figures quoted are derived from the latest WLTP test cycle.

<sup>^</sup> Not available on Prime-Line models.

\* Available on Makoto grades only.

~Factory fitted option prices quoted are recommended retail prices and are inclusive of VAT at 20%.

Pricing and specification are subject to change. Please speak with your local dealer for latest pricing information.



# MAZDA MX-30 - ELECTRIC TECHNOLOGY

Mazda wants to enrich people's lives through car ownership and driving experience. The company envisions cars existing sustainably with the earth and society, and is committed to embracing, tackling and solving new automotive challenges through creative, forward-thinking. This is the core of the Mazda vision.

The Mazda MX-30, Mazda's first electric car is the newest edition to showcase this forward-thinking. This all-electric vehicle introduces a new electric drive technology to Mazda, called e-Skyactiv. This system is equipped with a 35.5kWh lithium-ion battery and has a driving range of approximately 124 miles\*, far exceeding the 26 mile\*\* average daily drive of UK drivers.

The Mazda MX-30 is an electric car that delivers a truly unique driving experience – that simply feels as natural as driving a car with an internal combustion engine.



## Charging overview - What you need to know...

- The Mazda MX-30 is compatible with the most common charging connectors (CCS and Type 2) for both at-home and out-of-home charging, via AC or DC.
- There are a number of third party apps available to also help locate charging points, meaning you can plan where you want to charge when out and about
- Charging cables and power sockets are completely weatherproof so can be used at any time to charge your Mazda MX-30.
- The sockets lock into the car, meaning it is secure and safe to leave unattended

\* Range figures are for comparison purposes and may not always reflect real life driving results which depend on a number of factors. These include the starting charge of the battery, accessories fitted (post registration), variations in weather, driving styles, vehicle load and use of features such as air conditioning or heated seats.

\*\* Internal research, 2019 data.

# SKYACTIV-VEHICLE DYNAMICS - ENGINES AND MAZDA M HYBRID MHEV

## SKYACTIV-G / E-SKYACTIV G

Both our Skyactiv-G and e-Skyactiv G engine's are highly-efficient direct-injection petrol engines, achieving impressive engine efficiency thanks to the high compression combustion, resulting in excellent fuel economy and low CO<sub>2</sub> emissions.

Our 2.0 122ps e-Skyactiv G\* engines and 2.5 194ps Skyactiv-G\*\* engines also feature cylinder deactivation, delivering further improvements in economy and efficiency by automatically switching between two-cylinder and four-cylinder operation when cruising at constant speeds and not when under heavy loads. The engine shuts down two of the four cylinders with fuel injection and injection timing precisely controlled, so that the cylinder deactivation isn't noticeable to the driver.



## E-SKYACTIV X\*\*\*

The 2.0 186ps e-Skyactiv X powertrain is the very latest in engine technology providing more power, improved fuel efficiency and even lower CO<sub>2</sub> emissions. Exclusive to Mazda, e-Skyactiv X burns petrol more efficiently thanks to our pioneering Spark Controlled Compression Ignition (SPCCI).

With SPCCI, an extremely lean mix of fuel and air are compressed to an extremely high pressure. A spark then ignites a very small, dense amount of fuel, which further raises the heat and pressure in the cylinder, causing the remaining fuel to ignite under pressure (like a diesel). This means you get all the performance of a naturally aspirated petrol engine, but with the fuel economy and low CO<sub>2</sub> emissions of a Diesel.



\* 2.0 122ps e-Skyactiv G engines available on Mazda3 and Mazda CX-30 models.

\*\* 2.5 194ps Skyactiv-G engines available on Mazda6 and Mazda CX-5 models.

\*\*\* 2.0 186ps e-Skyactiv X engines available on Mazda3 and Mazda CX-30 models.

Mazda2 Hybrid does not feature Skyactiv Vehicle Technology.

# SKYACTIV-VEHICLE DYNAMICS - ENGINES AND MAZDA M HYBRID MHEV

## SKYACTIV-D

As the World's lowest compression ratio diesel, our 2.2 SKYACTIV-D diesel engines\* are fully compliant with all Euro 6 standards, are clean and efficient and are designed to offer you the right engine for your needs without compromise. This delivers on our promise of cars that are fun to drive and meets our commitment to protecting the environment.

Our innovative SKYACTIV diesel technology has a compression ratio much lower than traditional diesels; this allows the combustion temperature and pressure at the optimal moment to be lower, extending ignition so the air and fuel has time to mix much better, making combustion more uniform and complete. The more complete the combustion, the less CO<sub>2</sub> and NO<sub>x</sub> is produced.



\* 2.2 Skyactiv-D engines available on Mazda CX-5 models.  
Mazda2 Hybrid does not feature Skyactiv Vehicle Technology.

## MAZDA M HYBRID CAR



Mazda M Hybrid is our innovative evolution of hybrid car technology. It uses four main components to capture energy that is normally wasted during braking. It stores that energy within the 24v Lithium-ion Battery and uses it to assist the engine and power the car's electrical systems, meaning you can drive further on a tank of fuel whilst also contributing to lower CO<sub>2</sub> emissions and other particulates.

The Mazda3 and Mazda CX-30 feature this new technology which comes as standard on both e-Skyactiv G and e-Skyactiv X petrol engines. The result is a car that delivers outstanding performance, low running costs and strong environmental credentials.

Mazda2 90ps & 115ps models with Manual Transmission also feature a Mild Hybrid System providing the benefits of improved fuel economy and lower CO<sub>2</sub> emissions, but works in combination with a Capacitor for electricity storage rather than a 24v lithium-ion battery.



# SKYACTIV-VEHICLE DYNAMICS – TRANSMISSIONS, BODY AND CHASSIS

## TRANSMISSIONS

SKYACTIV-MT is a light and compact manual transmission system that combines superior fuel economy with the crisp shifting feel of a sports car, ensuring perfect control.

Also available is Mazda's highly-efficient, 6-speed SKYACTIV-DRIVE automatic transmission. Featuring the best attributes of CVT, Dual Clutch and conventional automatic transmissions, SKYACTIV-DRIVE provides you with a direct feel with smooth gear shifts leading to great fuel economy.



## SKYACTIV-BODY

For a car to excel in its basic functions – accelerate, turn and stop – it must have a lean body, but also be sturdy to ensure safety. Each body has been designed around these elements leading to a light, rigid and robust body that ensures safe and joyful driving.

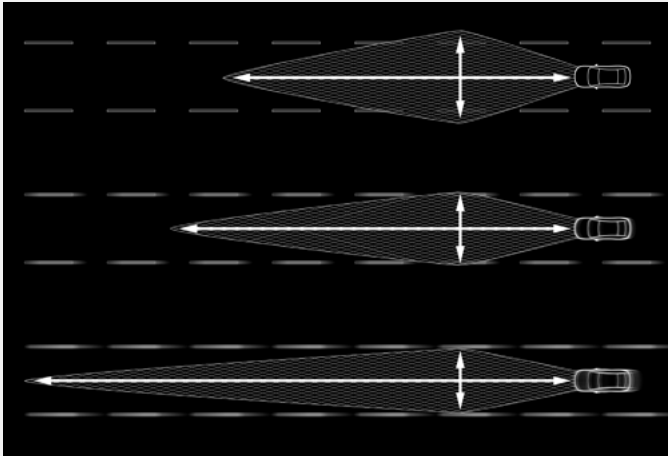


## SKYACTIV-CHASSIS

Providing a lightweight chassis that delivers driving pleasure and comfort, leading to that pure 'Jinba-Ittai' oneness between car and driver. The perfectly fine tuned chassis provides our famed driving experience of agility at low and medium speeds, and stability at motorway speeds for both driving pleasure and comfort.



# Advanced Technology



## ADAPTIVE LED HEADLIGHTS

Mazda's Adaptive LED Headlights provide the ultimate in headlight technology, lighting up the road ahead as if it were daytime and allowing anybody to enjoy safe and stress-free driving at any time of day.

The system increases visibility at night to help drivers stay vigilant by combining three technologies: Wide-range Low Beams which light up a wider area at low speeds, Highway mode which helps you see further when travelling at speed, and Glare-free High Beams which automatically dim part of the illuminated area to avoid dazzling other drivers.

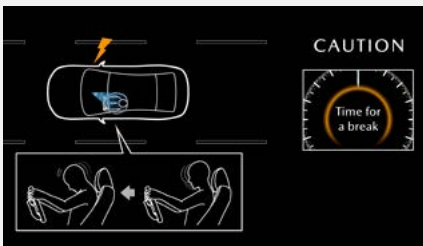
(Available on certain grades across the entire Mazda range)

## COLOUR ACTIVE DRIVING DISPLAY (HEAD-UP DISPLAY)

The system includes Traffic Sign Recognition\* and projects full-colour information directly within the driver's line of sight. The information displayed includes speed, turn-by-turn navigation, speed limit information\*, vehicle status and advanced safety equipment status.

(Available on certain grades on Mazda2 & Mazda CX-5. Standard across the range on Mazda3, Mazda6, Mazda CX-30 & Mazda MX-30)

\*Not available on Mazda2 models.



## DRIVER MONITORING

Detects sleepiness or inattention by monitoring changes in expression or movement of the driver's line of sight. A camera and infrared LED monitor the driver's condition both day and night. If the system determines that the driver has fallen asleep or is inattentive, it sounds an alert to make the driver aware while also preparing for automatic braking to help prepare for a potential incident.

(Available on certain grades on Mazda3, Mazda CX-30, Mazda MX-30 & Mazda CX-60)

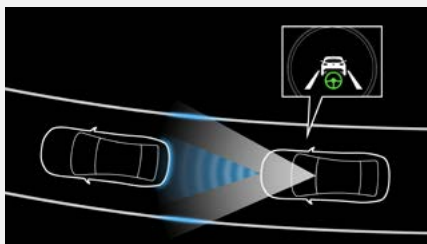
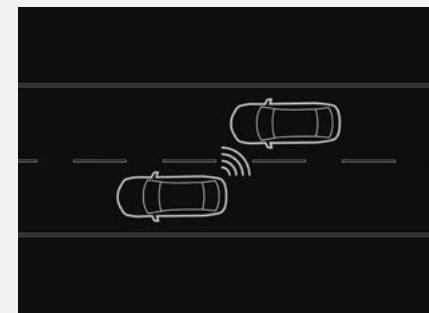
# Advanced Technology

## BLIND SPOT MONITORING (BSM) WITH REAR CROSS TRAFFIC ALERT (RCTA)

BSM uses radars mounted in the rear bumper to detect vehicles approaching from behind and in the adjacent lane. It alerts the driver to the presence of vehicles in the blind spot on either side by displaying an icon in the appropriate door mirror. If the driver indicates to change lanes with a vehicle in the blind spot, the icon flashes and a warning beep is sounded.

RCTA is designed to help you make sure it's safe to start backing up. The system uses the same radars and indicators as BSM to watch for vehicles coming from both sides and alert the driver when they come near.

(Available on certain grades across the entire Mazda range)



## CRUISING & TRAFFIC SUPPORT (CTS)

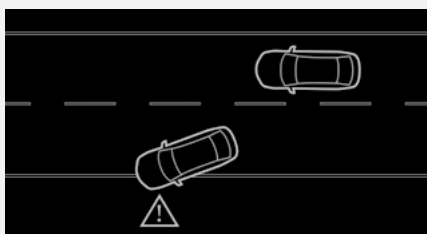
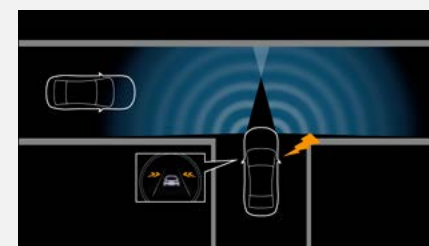
Automatically operates the accelerator and brake pedals to maintain a proper trailing distance between the your Mazda and the vehicle ahead. In addition, it assists with steering operations to keep the car in its proper lane. CTS contributes to reducing driver fatigue, supporting a safer, more reassuring and more comfortable driving experience.

(Available on certain grades on Mazda3, Mazda CX-30, Mazda CX-5 and Mazda MX-30. Part of the optional Driver Assistance pack on Mazda CX-60)

## FRONT CROSS TRAFFIC ALERT

Mazda's newly developed system detects other vehicles approaching from blind spots at the front right or left of the vehicle and alerts the driver of their presence. This helps prevent a common cause of accidents, when cars enter a T-junction with a partially obscured view.

(Available on certain grades on Mazda3, Mazda CX-30 & Mazda MX-30. Part of optional Driver Assistance pack on Mazda CX-60)



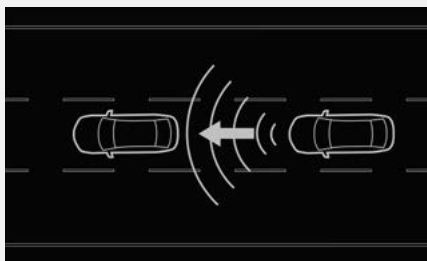
## LANE DEPARTURE WARNING SYSTEM (LDWS) WITH LANE KEEP ASSIST SYSTEM

Designed to prevent your vehicle from inadvertently straying from its lane. A front view camera monitors the road ahead and calculates the cars position relative to the lane markings. If the system detects the vehicle is moving out of its lane unintentionally, the steering wheel will vibrate and an audible alert will sound. The system will also take corrective action to help you stay within the lanes through assisted steering.

(Available with differing features across the entire Mazda range)



# Advanced Technology



## MAZDA RADAR CRUISE CONTROL

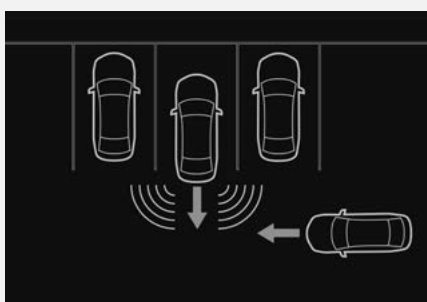
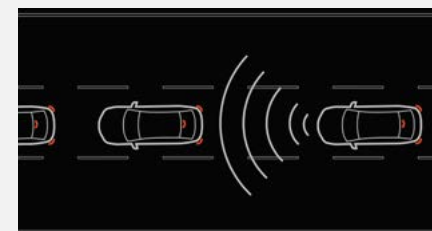
To activate, the driver sets a maximum speed (just as with cruise control) and size of the gap to maintain. The radar watches for traffic ahead and once the system senses a vehicle in front, the car will slow down and speed up automatically maintaining the drivers pre-set distance. Automatic models also have the additional feature of 'Stop & Go', meaning the vehicle will automatically accelerate and brake in start/stop traffic with minimal input from the driver.

(Not available on Mazda2 & Mazda MX-5. Standard across the range on Mazda3, Mazda6, Mazda CX-30, Mazda CX-5 & Mazda MX-30. Part of optional Driver Assistance pack on Mazda CX-60)

## SMART BRAKE SUPPORT – FRONT

Alerts the driver of a possible collision using the warning indications in the display and a warning sound if the front radar sensor and Forward Sensing Camera determine that there is the possibility of a collision with a vehicle ahead, pedestrian, or a bicycle. Furthermore, if a collision is unavoidable, the automatic brake control is performed to reduce damage in the event of a collision. In addition, when the driver depresses the brake pedal, the brakes are applied firmly and quickly to assist.

(Standard across the Mazda3, Mazda CX-30, Mazda MX-30 & Mazda CX-60 range)



## SMART BRAKE SUPPORT – REAR

Reduces damage in the event of a collision by operating the brake control when the system's sensors detect an obstruction at the rear.

## SMART BRAKE SUPPORT – REAR CROSSING

Assists in avoiding accidents and reducing damage by applying the brakes if there is the possibility of collision with a vehicle approaching from the rear while you are reversing out of parking space.

(Available on certain grades across the Mazda3, Mazda CX-30 & Mazda MX-30 range. Part of optional Driver Assistance pack on Mazda CX-60)

## i-ACTIV AWD

Whether you are on the motorway on a dark and rainy night or driving up a snowy country road, Mazda's all-wheel-drive system is designed to provide safety and comfort with fuel efficiency. Our engineers have developed i-ACTIV AWD to constantly monitor road conditions in real-time, watching for tiny variations in wheel speed that a driver would never notice. The system proactively controls the distribution of torque to all four wheels providing solid and predictable handling for all-road performance.

(Available on Mazda CX-30, Mazda CX-5 & Mazda CX-60)



## DRIVE TOGETHER

For further information on any of the Mazda Range, please visit [www.mazda.co.uk](http://www.mazda.co.uk) or contact the Mazda Fleet Sales team:

email: [info@mazda-fleet.co.uk](mailto:info@mazda-fleet.co.uk)

Phone: 03330 600 040

Mazda Motors UK reserves the right to introduce changes in specification and equipment due to its ongoing product development. Prices are subject to change without prior notice. Colour and trim samples shown in this digital brochure may vary from the actual colours because of the variations of resolutions and colours found in various screen displays, and if printed, limitations within the printing process. Models shown may not be to UK specification. It is recommended that you consult your Mazda dealer when referring to these. Apple CarPlay®, Android Auto™ and Bose are registered trademarks in the U.S. and other countries. Used with permission. The Bluetooth® word mark and logos are owned by the Bluetooth SIG, Inc. and any use of such marks by Mazda Motor Company is under licence. Other trademarks and trade names are those of their respective owners.

Effective from October 2022

