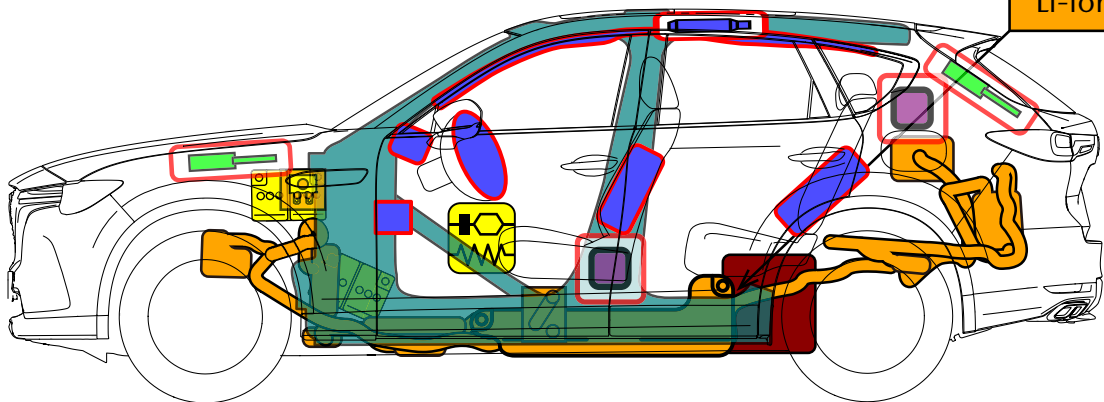
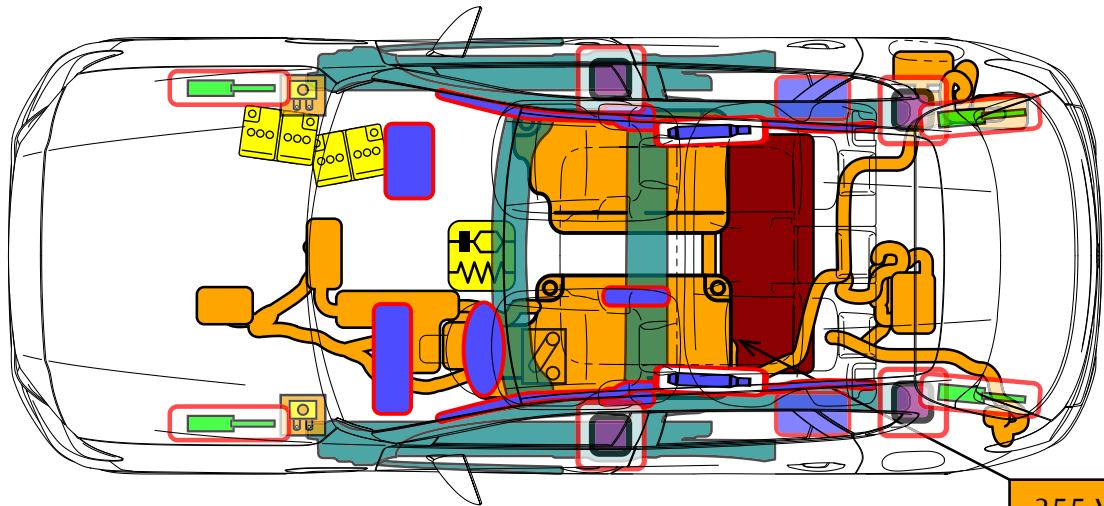
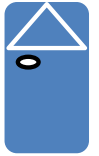
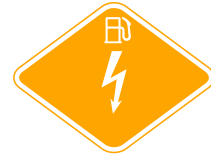




MAZDA CX-60

Body Type: WAGON
(2022-)



355 V
Li-ion

	Airbag		Stored gas inflator		Seat belt pretensioner		SRS control unit		Pedestrian protection active system
	Automatic rollover protection system		Gas strut / Preloaded spring		High strength zone		Zone requiring special attention		
	Battery low voltage		Ultra capacitor, low voltage		Fuel tank		Gas tank		Safety valve
	High voltage battery pack		High voltage power cable / component		High voltage disconnect		Fuse box disabling high voltage system		Ultra capacitor, high voltage
	High voltage disconnect (cutting solution)		Disconnect high voltage device		Fuel tank content gasoline / ethanol				

This sheet is applicable for MAZDA CX-60, L.H.D., e-SKYACTIV PHEV, and Wagon.

ID No.

Version No.

Page No.

RSE-KHEPW-A

1.0

1 / 4

1. Identification / recognition



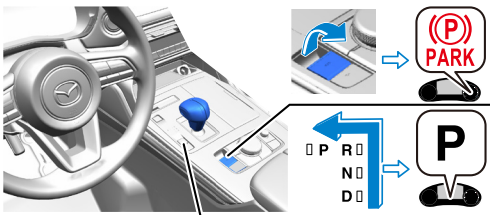
LACK OF ENGINE NOISE DOES NOT MEAN VEHICLE IS OFF: SILENT MOVEMENT OR INSTANT RESTART CAPABILITY EXISTS UNTIL VEHICLE IS FULLY SHUT DOWN. WEAR APPROPRIATE PPE.



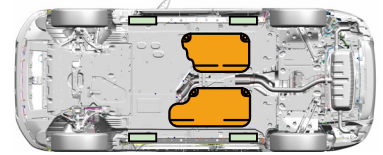
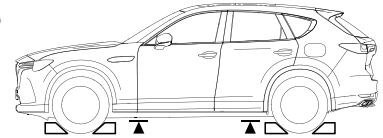
2. Immobilisation / stabilisation / lifting

IMMOBILIZE THE VEHICLE

- Block the wheels.
- Set the parking brake.
- Put the car in P position.



LIFTING POINTS



Appropriate lifting points High voltage battery

3. Disable direct hazards / safety regulations

Systems that do not operate if power is lost

Door lock



Power window



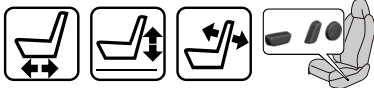
Shift-by-wire



Electric parking brake (EPB)



Power seat



Electric liftgate opener



Tilt and telescopic



Procedure when EV is connected for charging

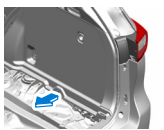
Charge connector is unlocked

1. Remove the charge connector.



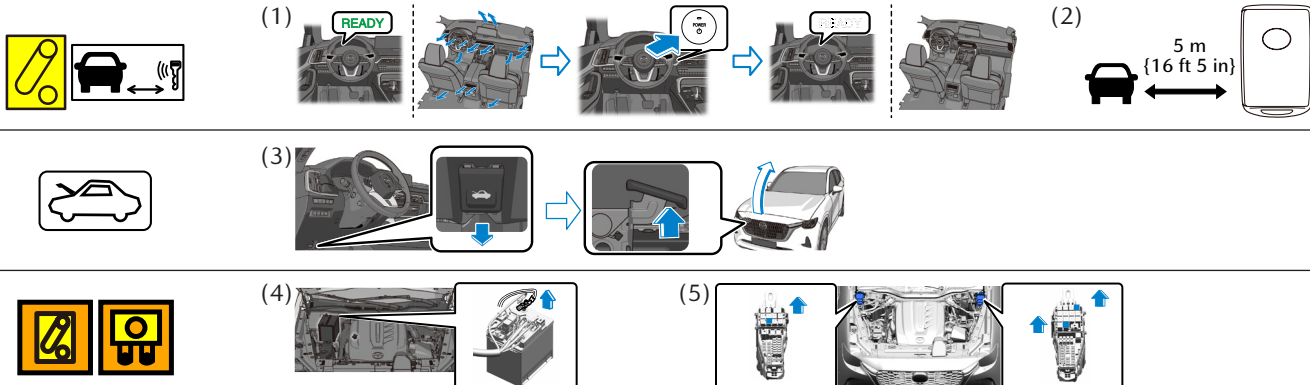
Charge connector is locked

1. Remove the trunk covering.
2. Remove the trunk board.
3. Pull the charge connector lock manual release cable in the release direction shown in the figure.
4. Remove the charge connector with the charge connector lock manual release cable pulled.

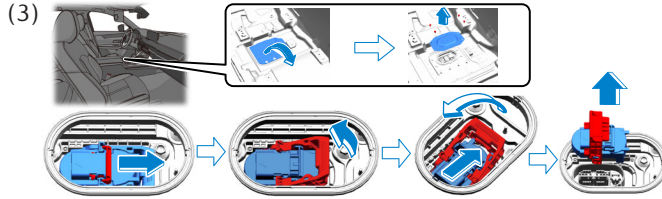
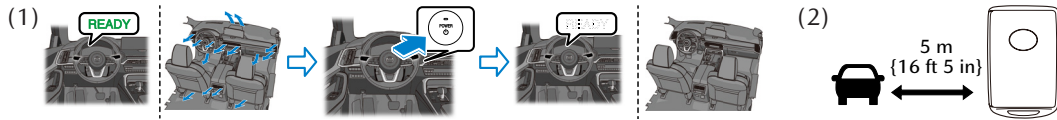


Procedure for disabling high voltage system

Main disabling method

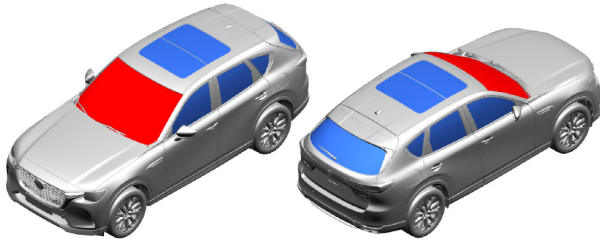


Alternative disabling method

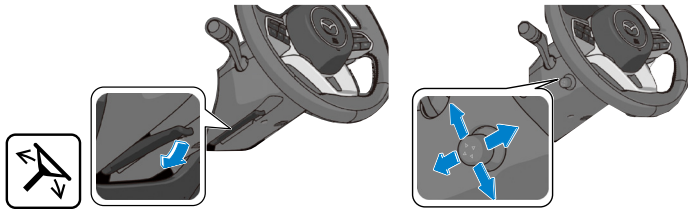


4. Access to the occupants

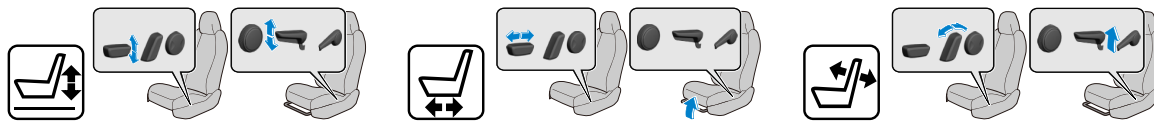
Glass types



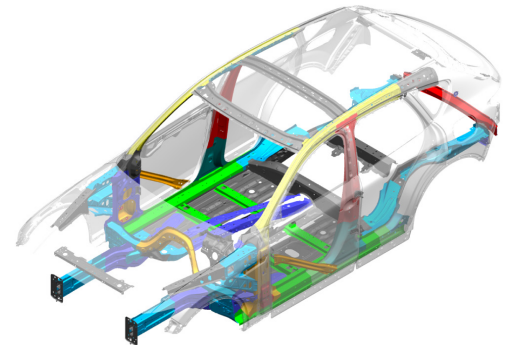
Steering wheel angle adjustment



Seat position operation



High strength steel in body



- 1800 MPa {18355 kgf/cm², 261068 psi}
- 1500 MPa {15296 kgf/cm², 217557 psi}
- 1470 MPa {14990 kgf/cm², 213206 psi}
- 1310 MPa {13358 kgf/cm², 190000 psi}
- 1180 MPa {12032 kgf/cm², 171145 psi}
- 980 MPa {9993 kgf/cm², 142137 psi}
- 780 MPa {7954 kgf/cm², 113130 psi}
- 590 MPa {6016 kgf/cm², 85572 psi}

5. Stored energy / liquids / gases / solids

	Li-ion / DC 355V	
	Pb / DC 12V	
	R-1234yf / 1210 g {42.68 oz}	
	Gasoline / 50.0 L {13.2 US gal, 11.0 Imp gal}	



THE BATTERY ASSEMBLY COVER SHOULD NEVER BE BREACHED OR REMOVED UNDER ANY CIRCUMSTANCES, INCLUDING FIRE. DOING SO MIGHT RESULT IN SEVERE ELECTRIC BURNS, SHOCKS, OR ELECTROCUTION.

6. In case of fire



EXTINGUISH THE FIRE USING LARGE AMOUNTS OF WATER OR AN ABC FIRE EXTINGUISHER.



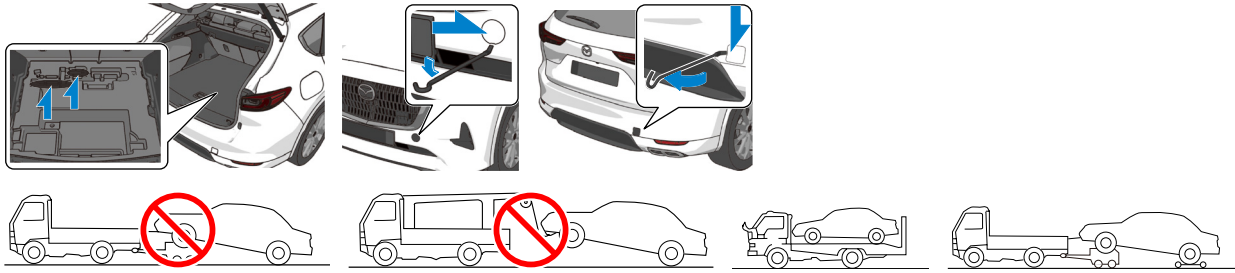
BATTERY RE-IGNITION!

7. In case of submersion



- DO NOT TOUCH ANY HIGH VOLTAGE PARTS WHEN THE VEHICLE IS SUBMERGED OR PARTIALLY SUBMERGED IN WATER.
- IF THE HIGH VOLTAGE BATTERY IS DAMAGED OR YOU ARE UNSURE WHETHER OR NOT IT IS DAMAGED, PERFORM THE RESCUE OPERATION WHILE WEARING THE APPROPRIATE INSULATING PROTECTIVE EQUIPMENT.
- AFTER PULLING THE VEHICLE OUT OF THE WATER, DRAIN THE INTERIOR OF THE VEHICLE AND REMOVE THE SERVICE PLUG.

8. Towing / transportation / storage



BATTERY RE-IGNITION!



KEEP THE VEHICLE OUTDOORS AWAY FROM FLAMMABLES.

10. Explanation of pictograms used

	Hybrid Electric Vehicle on fuel of liquid group2		Air conditioning component		Corrosives
	Left hand drive		General warning sign		Hazardous to the human health
	Bonnet		Warning, Electricity		Remove smart key
	Device to shut down power in vehicle		Use thermal Infrared camera		Door-lock control
	Steering wheel, tilt control		Use water to extinguish the fire		Window lift (power-operated)
	Seat adjustment, longitudinal		Use ABC powder to extinguish the fire		Parking brake
	Seat height adjustment		Explosive		Laminated glass
	Seat adjustment, seat back recline		Gases under pressure		Tempered glass
	Lifting point; central support		Flammable		